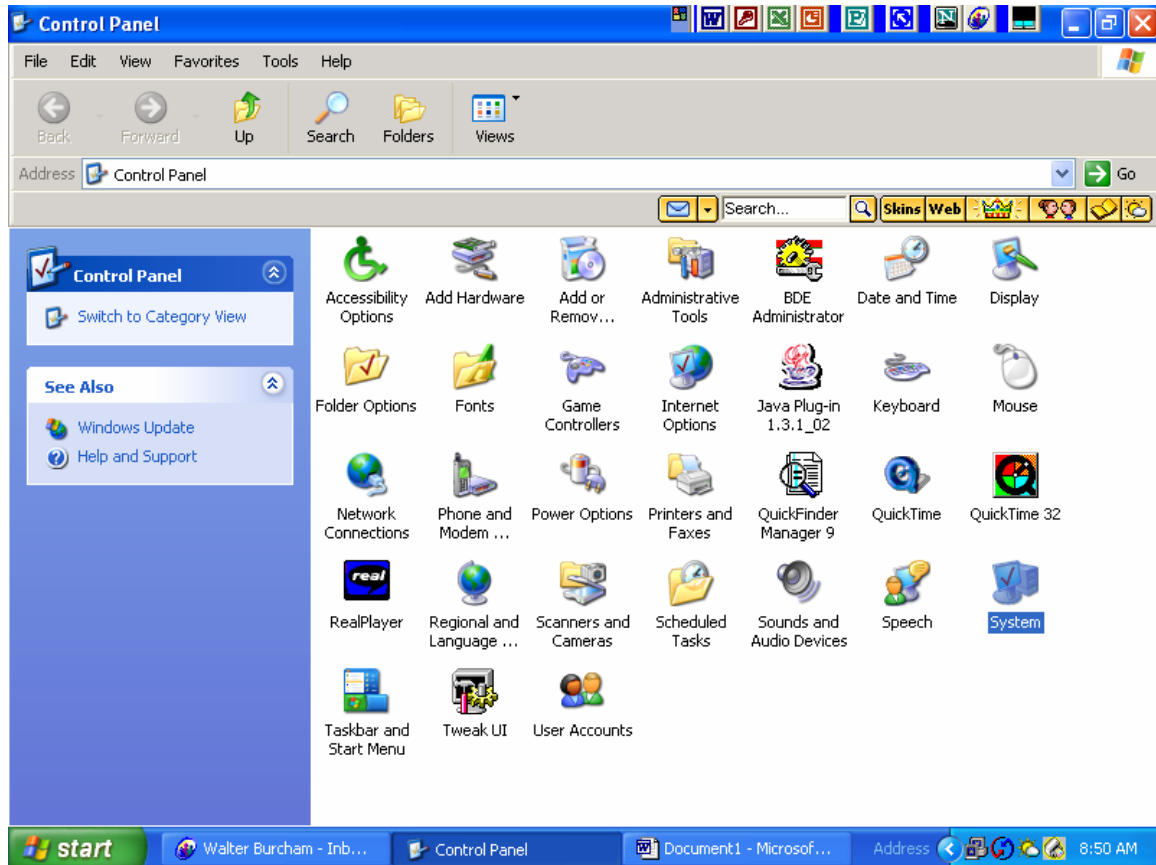


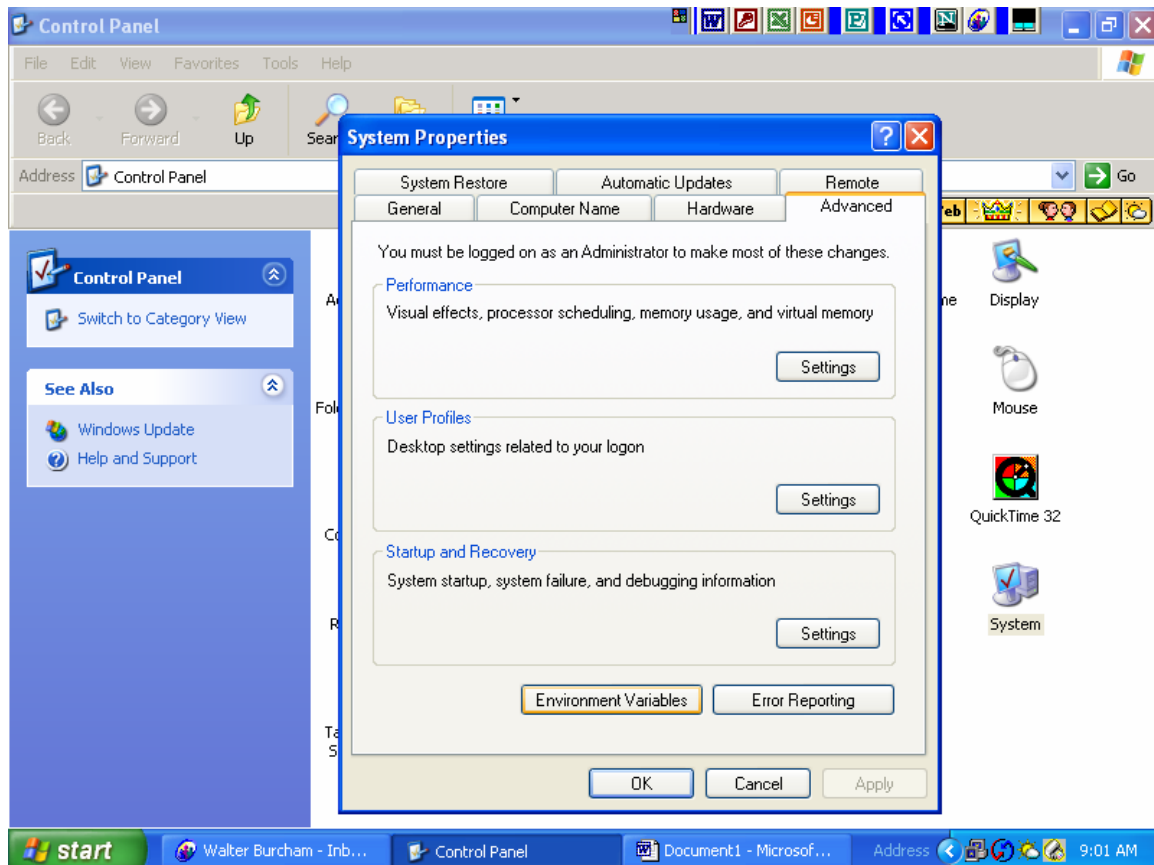
Set TIA

As an Administrator Control Panel\System Icon



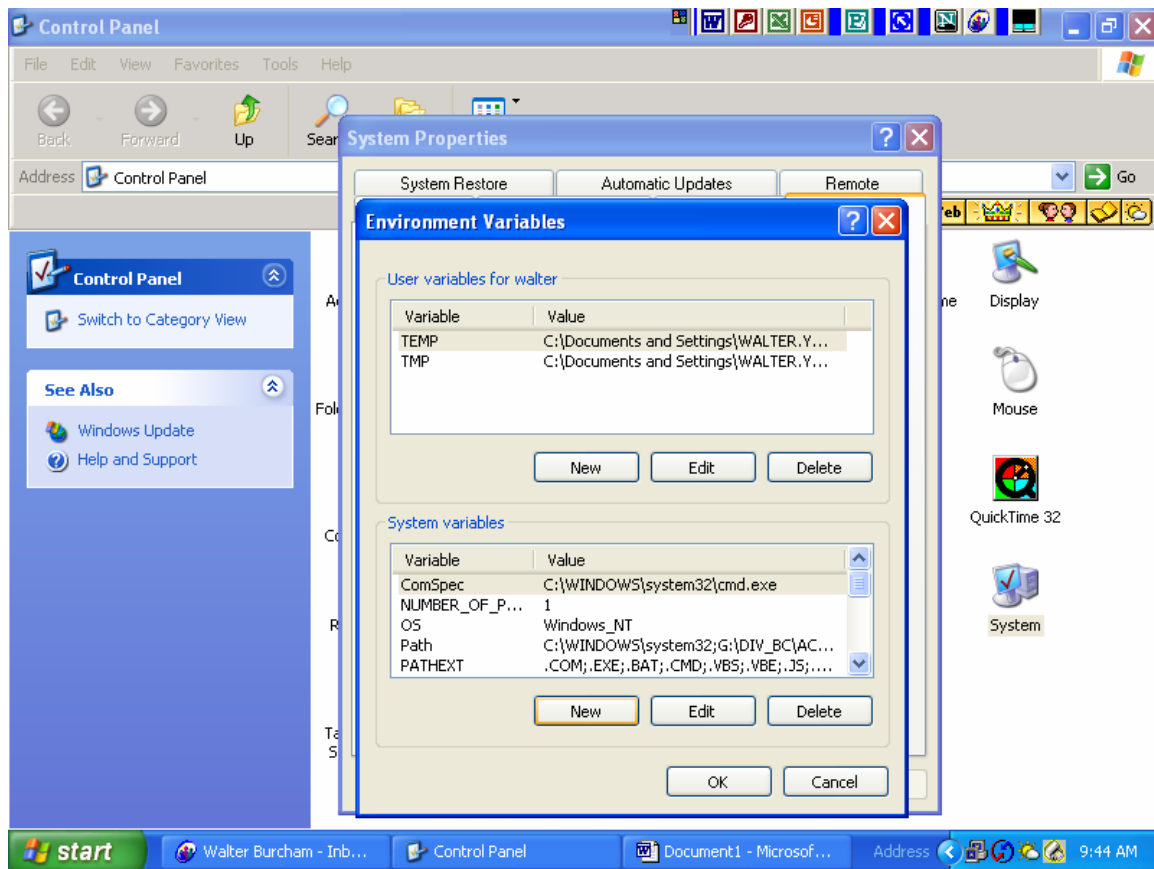
Set TIA cont...

As an Administrator Control Panel\System Icon\ Advanced
Below the **Startup and Recovery Panel** (third panel down) select the **Environmental Variables** button.



Set TIA cont... Environmental Variables

Under System Variables select the **New** button.



Set TIA cont...

New System Variables Screen

In the box for Variable name: enter TIA

In the box for Variable value: enter the WS from Track-it

Click on OK, Click on OK, Click on OK and then Close Control Panel.

