

C:\Documents and Settings\irwhisen.YC\My Documents\Documentation\SOPs\To install McAfee.doc

To install McAfee:

Note: if you have to install other applications (Netscape, Corel, etc), it's best to install McAfee after all the others so that you don't have to keep closing the VShield and the VirusScan Console in the System Tray when installing new applications.

Start | Run | Browse

Browse to

M: drive (which will be \\sysnet\shr_itsinst)
Desktop Installs
McAfee
McAfee Client 7.1.0 \ VSE710EN \ Setup

Click on OK to begin installation

Window Process	Action
McAfee VirusScan Enterprise Setup	Next
Network Associates Licensing License expiry type I accept the terms in the license agreement	Select Perpetual Choose the radio button to agree to the terms Click on OK
Setup Type	Default of Typical - Click on Next
Ready to install...	Click on Install
McAfee VirusScan Enterprise Setup Completed Successfully	Check Box for – Update Now Clear Box for – Run On-Demand Scan Click on Finish

Configuring McAfee:

Double-click the VirusScan Console in the System Tray

Double-click AutoUpdate

Click on Schedule Button

Task Tab

Check the box for “Enable”

Schedule Tab

Schedule, Schedule task, Set to **‘Weekly, 12:00 PM’**

Schedule task Weekly, Set to Every 1 week on Monday

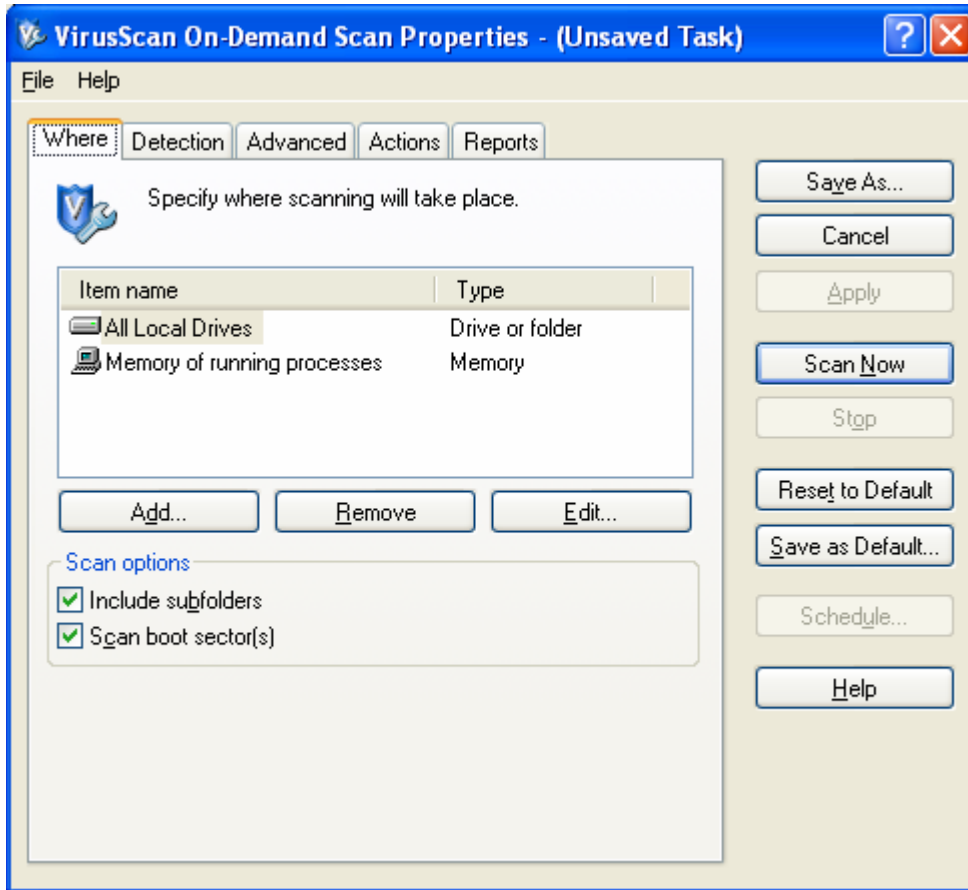
Click on OK, Click on OK, Close the Console window

C:\Documents and Settings\irwhisen.YC\My Documents\Documentation\SOPs\To install McAfee.doc

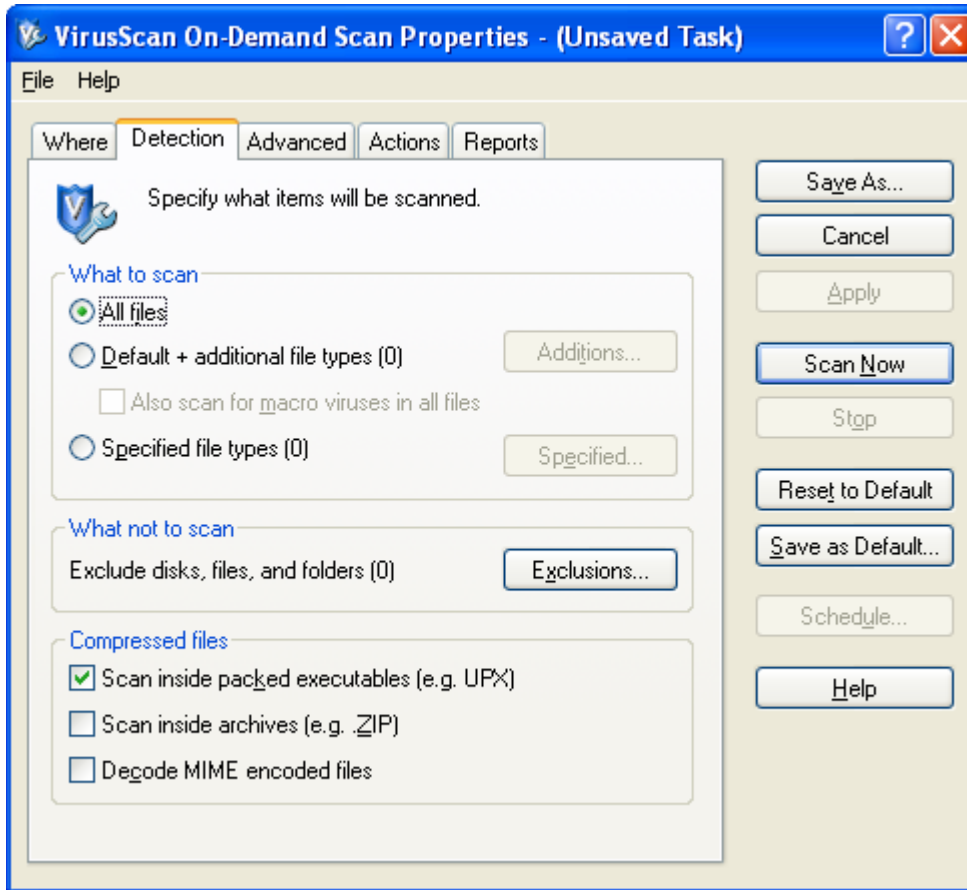
Launch McAfee (Start | All Programs | Network Associates | VirusScan On-Demand)

‘Where’ tab

Check Box’s for Include subfolders & Scan Boot sector[s]



Detection tab
What to Scan – Click radio button ‘All files’
Compressed files – Check box ‘Scan inside packed executables’



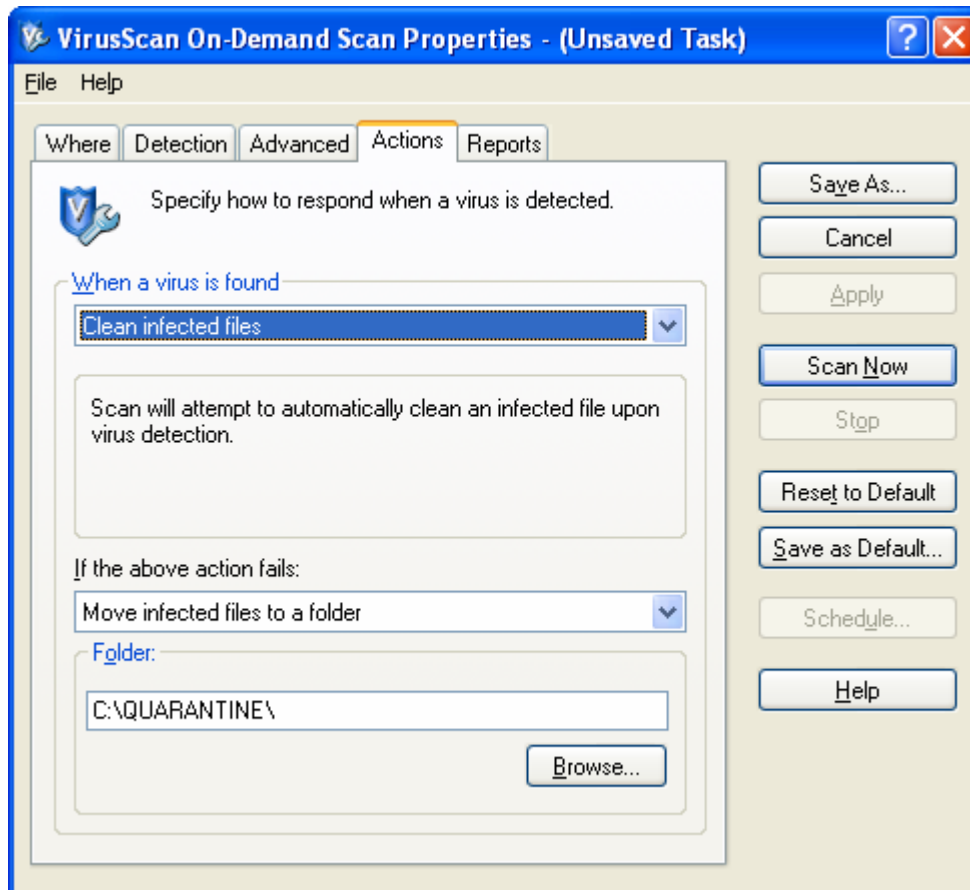
C:\Documents and Settings\irwhisen.YC\My Documents\Documentation\SOPs\To install McAfee.doc

Action tab

When a virus is found, chose 'Clean infected files'

If the above action fails: chose 'Move infected files to a folder'

Folder: 'C:\QUARTINE\'



Click 'Save as Default' button, Click on YES button
Close Scan Properties window

Run \\isis\Epolicy\framepkg.exe