

YAVAPAI COLLEGE FACILITIES MANAGEMENT NEWS

December 2023

The December issue of this newsletter contains the latest information related to Facilities Management programs and projects, along with general information concerning the implementation of the FY24 facilities master plan and capital improvements. If you have questions about the items listed, please email me at david.laurence@yc.edu. This newsletter is also posted on the Facilities website.

Transition of Rider Diner to The Eatery

Kudos to custodial team members Zeke Turpin, Patrick Flannigan, Matt Unger, Claude Mallicote, Harold Speers, Chris Robles, Stephanie Richmond, Maria Hernandez, Louis Tovar, and Anthony Torres for an outstanding job of deep cleaning the old Rider Diner in preparation for The Eatery opening up for the spring 2024 semester. This team has spent two weeks scrubbing, scraping, mopping, power washing, vacuuming, and sanitizing layers of grease and grime in preparation for a new culinary experience along with new furniture, paint, lighting, and flooring.



Custodial team members Christopher Robles and Harold Speers installing recently power-washed shelving



Zeke Turpin wiping down a fryer after a complete scrubbing



Floors prepped for new furniture to arrive the first week of January



More deep cleaning

Speaking of food services, The Café in Building 19 will be replaced with an Open Market grab-and-go, self-check kiosk system in early January. The Open Market will be managed by Hi-Line, Snack and Vending and is similar to the grab-and-go at CTEC.



Location of the new Open Market in Building 19



Open Market at CTEC

FY23-24 CAPITAL IMPROVEMENT PLAN

Health Sciences Center at Prescott Valley

The project is in full design phase. The new building will be constructed in two phases. The first phase will consist of the first two floors housing current and new health sciences programs and the renovation of the main entrance into the existing building for student services and testing.

The second phase, depending on funding, is the third-floor conference center which includes outdoor roof-top gathering spaces.

Structural elements and building support systems, such as elevators and HVAC units to support the second phase, will be included in the first phase of construction.

Current Programs

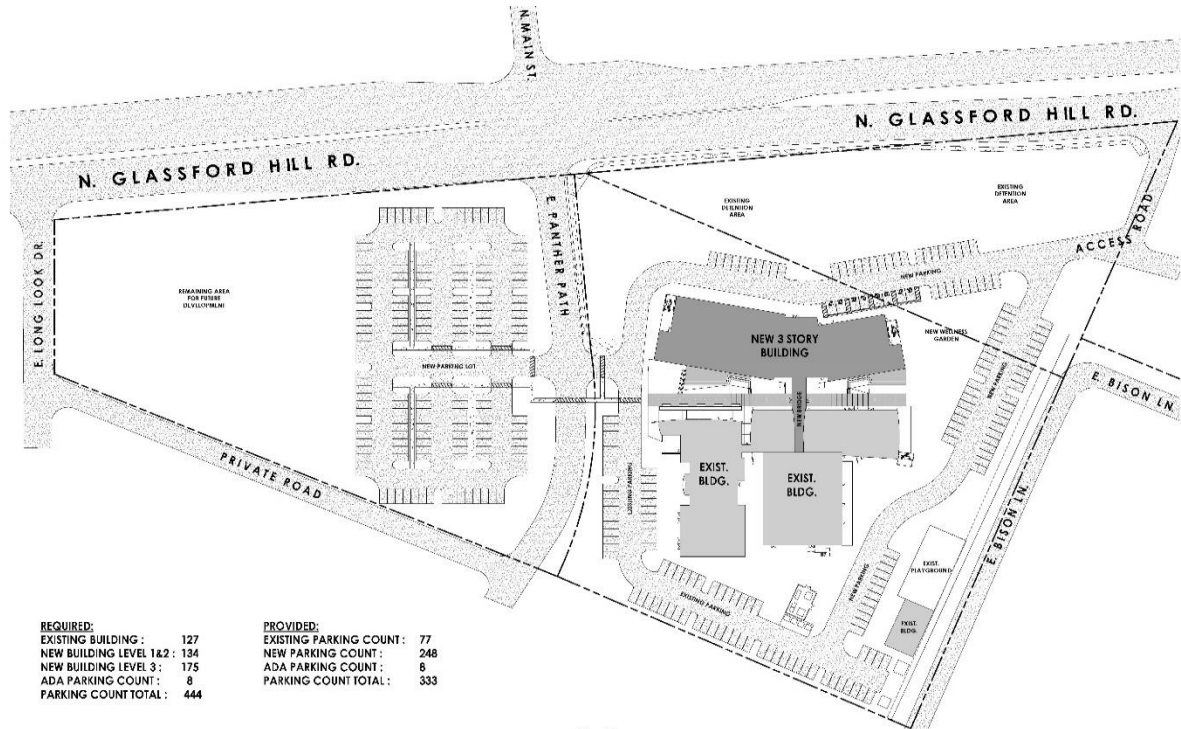
Nursing
EMS-Paramedicine & EMTs
Community Health Critical Care Paramedical
Certified Nursing Assistant
Phlebotomy
Medical Assisting
Medical Office Assistant
Medical Records Technician
Behavioral Health Technician
Radiology
Magnetic Resonance

New Programs

Bachelor of Science Nursing (underway)
Licensed Practical Nursing (underway)
Dental Assistant
Dental Hygiene
Physical Therapy Assistant
Respiratory Technician
Therapeutic Massage Technician



Rendering of the New Health Sciences Center Building at Prescott Valley



REQUIRED:		PROVIDED:	
EXISTING BUILDING :	127	EXISTING PARKING COUNT :	77
NEW BUILDING LEVEL 1&2 :	134	NEW PARKING COUNT :	248
NEW BUILDING LEVEL 3 :	175	ADA PARKING COUNT :	8
ADA PARKING COUNT :	8	PARKING COUNT TOTAL :	333
PARKING COUNT TOTAL :	444		

OVERALL CONCEPTUAL SITE PLAN
1/14/17

HEALTH SCIENCES CENTER **SPIS+**
YAVAPAI COLLEGE **ARCHITECTS**

Proposed site plan for Health Sciences Center



TOTAL AREA: 19,171 SF

SECOND FLOOR
1/14/17

HEALTH SCIENCES CENTER **SPIS+**
YAVAPAI COLLEGE **ARCHITECTS**

First Floor Classrooms, EMS, Simulation, Study Space, Massage and Physical Therapy

DEPARTMENT LEGEND									
RESEARCH	DENTAL	DENTAL	DENTAL	DENTAL	DENTAL	DENTAL	DENTAL	DENTAL	DENTAL
DENTAL	DENTAL	DENTAL	DENTAL	DENTAL	DENTAL	DENTAL	DENTAL	DENTAL	DENTAL
DENTAL	DENTAL	DENTAL	DENTAL	DENTAL	DENTAL	DENTAL	DENTAL	DENTAL	DENTAL
DENTAL	DENTAL	DENTAL	DENTAL	DENTAL	DENTAL	DENTAL	DENTAL	DENTAL	DENTAL

TOTAL AREA: 19,171 SF



SECOND FLOOR
02-102

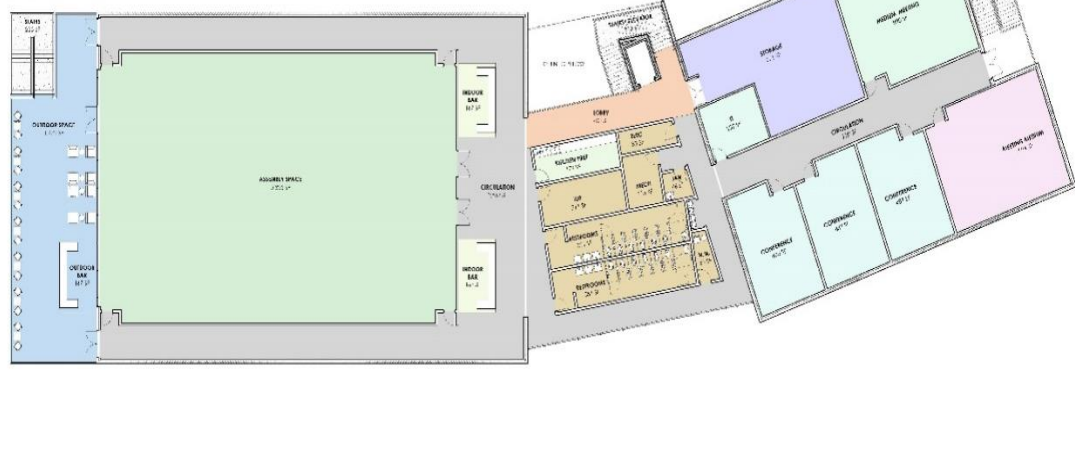


HEALTH SCIENCES CENTER **SPS+**
YAVAPAI COLLEGE **ARCHITECTS**

Second Floor Health Sciences Offices, Dental Assistant/Hygiene Labs and Skills Labs

FLOOR PLAN LEGEND			
ASSURANCE	CONFERENCE	LAB	OFFICE
LAB	LAB	LAB	LAB
LAB	LAB	LAB	LAB
LAB	LAB	LAB	LAB

TOTAL AREA: 19,653 SF



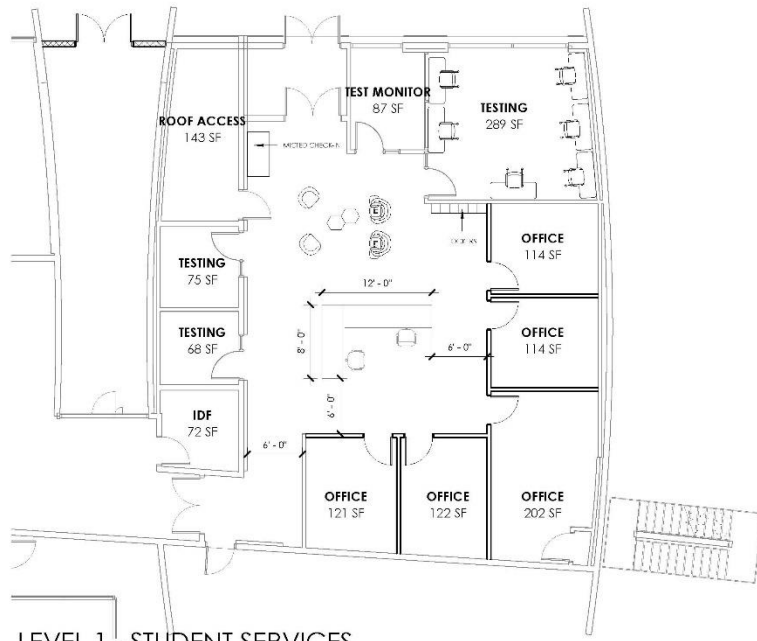
THIRD FLOOR
02-103



HEALTH SCIENCES CENTER **SPS+**
YAVAPAI COLLEGE **ARCHITECTS**

Third-floor flexible meeting and break-out spaces

Autodesk Decu/Navipal College Health Sciences Center/YC_ARCH_PV40_2023.rvt
12/19/2023 5:57:18 PM



LEVEL 1 - STUDENT SERVICES

1/8" = 1'-0"

PV BUILDING 40

YAVAPAI COLLEGE

SPS+
ARCHITECTS

8681 East Via De Negocio
Scottsdale, AZ 85258

www.spsplusarchitects.com

Renovated first floor of existing space for student services suite

Center for Learning and Innovation – Verde Valley Campus

Electrical and mechanical rough-in continues. Ductwork for HVAC is being installed along with the beginning of drywall.



Looking through tutoring at the information desk and quiet rooms

VERDE VALLEY CAMPUS – CENTER FOR LEARNING AND INNOVATION



RENDERINGS TO SHOW DESIGN INTENT. PENDING FINAL FURNITURE SELECTION.

1. ENTRY



2. LANDING – TUTORING SPACE



3. LANDING – OPEN SEATING



4. INFO DESK



Center for Learning and Innovation – Building M

VERDE VALLEY CAMPUS – CENTER FOR LEARNING AND INNOVATION



RENDERINGS TO SHOW DESIGN INTENT. PENDING FINAL FURNITURE SELECTION.

5. OPEN SEATING



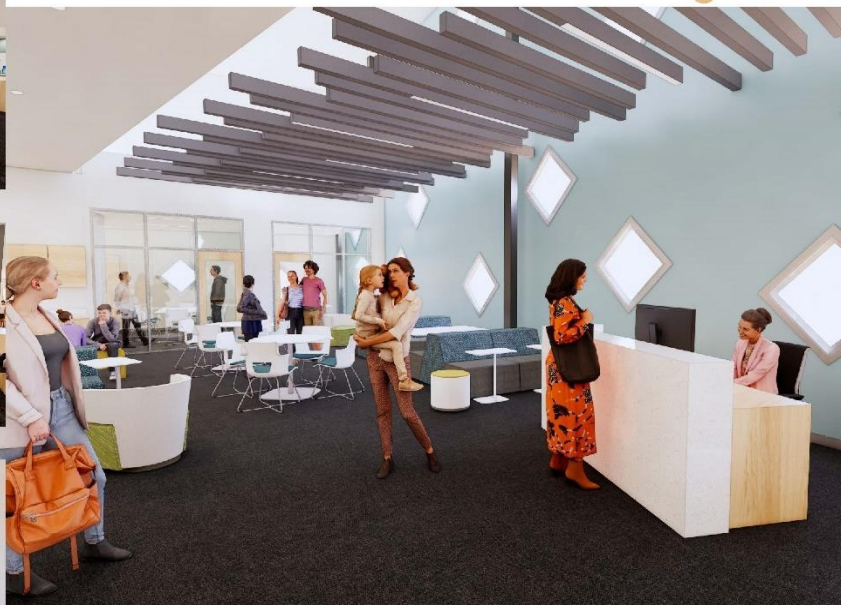
6. OPEN SEATING



7. CIRCULATION – RAMP



8. TUTORING SPACE



Center for Learning and Innovation - Prescott Campus

This project is in full design and on the way to construction documents. The steering committee will meet on January 18 to review the design progress, interior finishes, and furniture selection.

In April and May of 2024, Facilities and ITS will be working with the library staff to move items out of Building 19 in preparation for construction. Construction is scheduled from May 2024 through December 2025.

FLOOR PLAN

FIRST FLOOR



FLOOR PLAN

SECOND FLOOR PLAN



LEVEL 1 INFO DESK



LEVEL 1 TUTORING & HUDDLE ROOMS

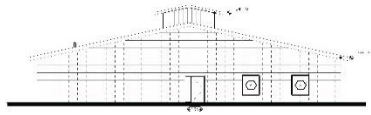


LEVEL 2 PROGRAMMING/MULTI-PURPOSE & EXPERIMENTAL CLASSROOM

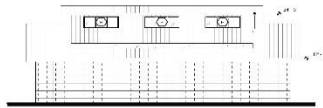


MICTED/YC Culinary

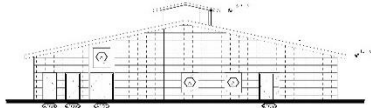
The College is partnering with Mountain Institute Career Technical Education District to construct an approximately 3,700-square-foot building at the College Chino Valley Agribusiness Center. The culinary building will replace a dilapidated Building 55.



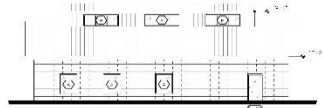
EXTERIOR ELEVATION - NORTH



EXTERIOR ELEVATION - EAST

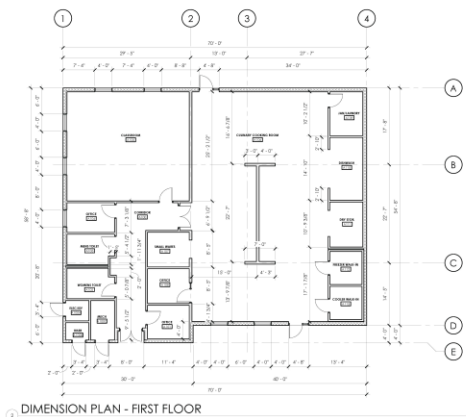


EXTERIOR ELEVATION - SOUTH

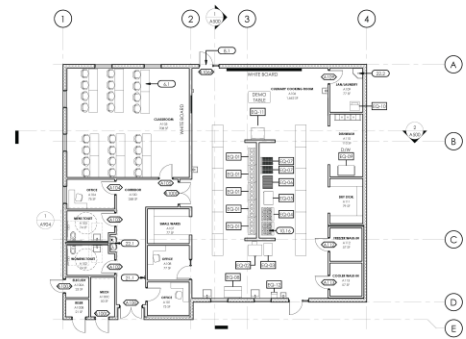


EXTERIOR ELEVATION - WEST

MOUNTAIN INSTITUTE CAREER TECHNICAL EDUCATION DISTRICT
 11111 S. 100TH AVENUE, SUITE 100, DENVER, CO 80231



DIMENSION PLAN - FIRST FLOOR



OVERALL FLOOR PLAN - FIRST FLOOR

MOUNTAIN INSTITUTE CAREER TECHNICAL EDUCATION DISTRICT
 11111 S. 100TH AVENUE, SUITE 100, DENVER, CO 80231



KEY NOTES

1. SEE ALL NOTES ON SHEETS A100 THROUGH A105.
2. SEE ALL NOTES ON SHEETS A100 THROUGH A105.
3. SEE ALL NOTES ON SHEETS A100 THROUGH A105.
4. SEE ALL NOTES ON SHEETS A100 THROUGH A105.
5. SEE ALL NOTES ON SHEETS A100 THROUGH A105.

EXTERIOR FINISH LEGEND

SYMBOL	DESCRIPTION
(Symbol)	CONCRETE
(Symbol)	BRICK
(Symbol)	EIFS
(Symbol)	GLASS
(Symbol)	PAINT
(Symbol)	ROOFING
(Symbol)	WOOD

GENERAL NOTES

1. SEE ALL NOTES ON SHEETS A100 THROUGH A105.
2. SEE ALL NOTES ON SHEETS A100 THROUGH A105.
3. SEE ALL NOTES ON SHEETS A100 THROUGH A105.
4. SEE ALL NOTES ON SHEETS A100 THROUGH A105.
5. SEE ALL NOTES ON SHEETS A100 THROUGH A105.

KEY NOTES

1. SEE ALL NOTES ON SHEETS A100 THROUGH A105.
2. SEE ALL NOTES ON SHEETS A100 THROUGH A105.
3. SEE ALL NOTES ON SHEETS A100 THROUGH A105.
4. SEE ALL NOTES ON SHEETS A100 THROUGH A105.
5. SEE ALL NOTES ON SHEETS A100 THROUGH A105.

GENERAL NOTES

1. SEE ALL NOTES ON SHEETS A100 THROUGH A105.
2. SEE ALL NOTES ON SHEETS A100 THROUGH A105.
3. SEE ALL NOTES ON SHEETS A100 THROUGH A105.
4. SEE ALL NOTES ON SHEETS A100 THROUGH A105.
5. SEE ALL NOTES ON SHEETS A100 THROUGH A105.

GENERAL NOTES

1. SEE ALL NOTES ON SHEETS A100 THROUGH A105.
2. SEE ALL NOTES ON SHEETS A100 THROUGH A105.
3. SEE ALL NOTES ON SHEETS A100 THROUGH A105.
4. SEE ALL NOTES ON SHEETS A100 THROUGH A105.
5. SEE ALL NOTES ON SHEETS A100 THROUGH A105.



YC COLLEGE CULINARY BUILDING
 YAVAPAI COLLEGE CHINO VALLEY CAMPUS
 2275 CHINO VALLEY AVENUE
 CHINO VALLEY, ARIZONA
 EXTERIOR ELEVATIONS

DATE: 10/11/2023
 TIME: 10:00 AM

REVIEWED BY: [Signature]
 DRAWN BY: [Signature]

PRELIMINARY
 CONSTRUCTION
 SCHEMATIC SET
 JOB NO: 20230118-001
 SHEET: A400



YC COLLEGE CULINARY BUILDING
 YAVAPAI COLLEGE CHINO VALLEY CAMPUS
 2275 CHINO VALLEY AVENUE
 CHINO VALLEY, ARIZONA
 OVERALL FLOOR PLAN - FIRST FLOOR

DATE: 10/11/2023
 TIME: 10:00 AM

REVIEWED BY: [Signature]
 DRAWN BY: [Signature]

PRELIMINARY
 CONSTRUCTION
 SCHEMATIC SET
 JOB NO: 20230118-001
 SHEET: A100

BUILDINGS AND GROUNDS PLANNED MAINTENANCE PROJECTS

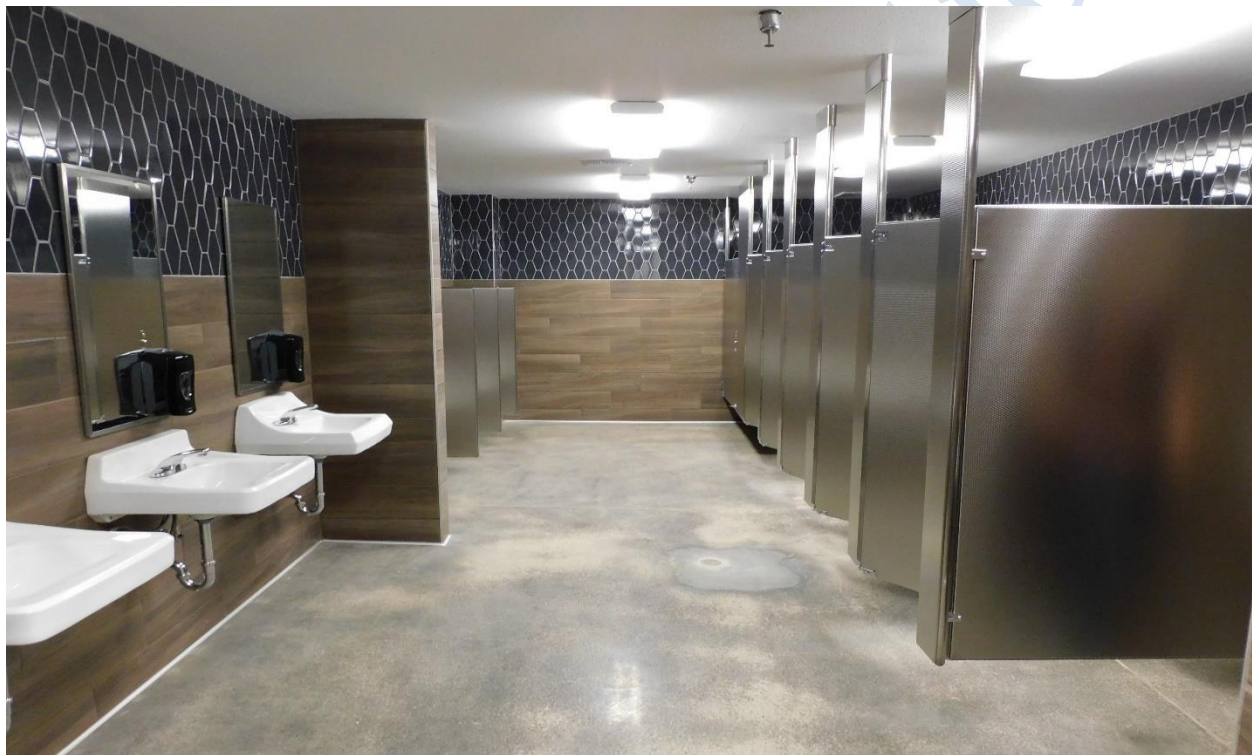
As part of the budget, planned maintenance projects are scheduled each year to ensure that College facilities are maintained at a level that supports optimum performance in building systems and infrastructure, life safety compliance, adequate maintenance and repair of roadways, parking lots, and College grounds. These projects result from a recent Facilities Condition Assessment (FCA), which identifies when repairs, modifications, or replacement of components should occur.

FCA Projects:

Buildings 2, 3, and 4 LED Lighting Upgrade – in process

CV Ag Center greenhouse infrastructure replacement and upgrades – in process

CTEC Restroom Rehabilitation – complete



CTEC restroom rehabilitation

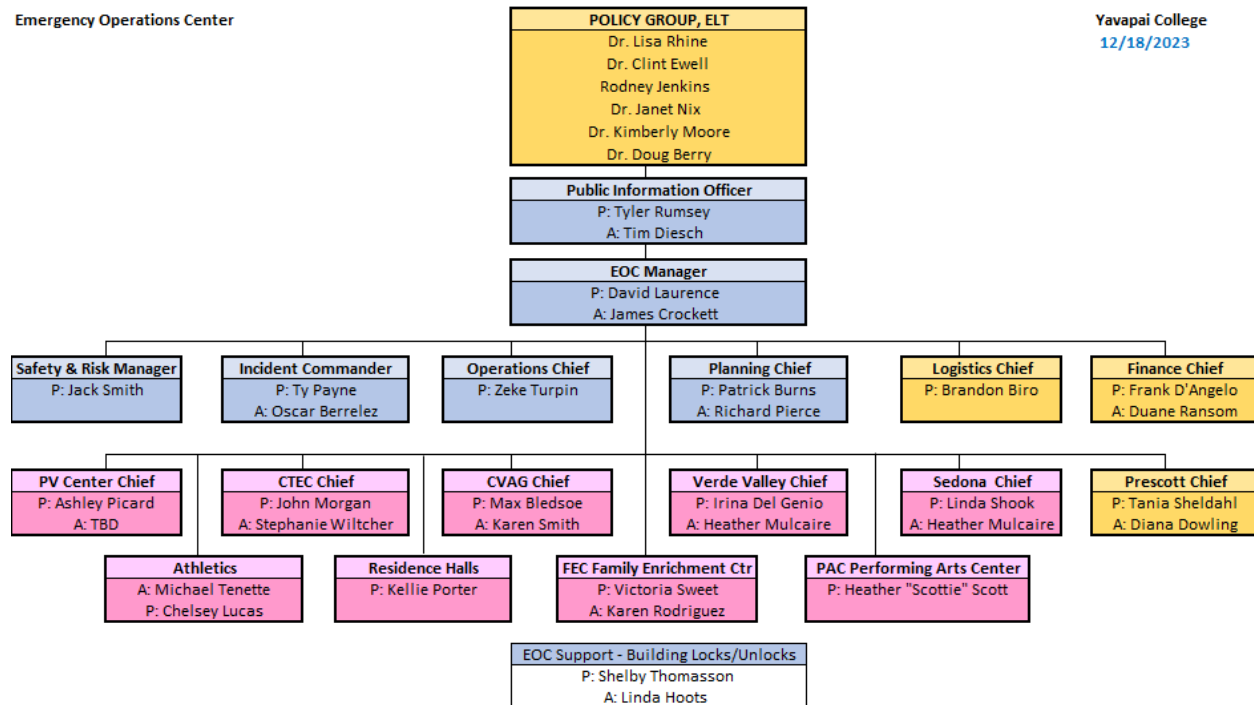
Emergency Preparedness

The Emergency Operations Center (EOC) is activated when an emergency arises that may impact any of the College's campuses or centers. For information about emergency communications, please contact any Core EOC team member listed below.

Campus Safety has installed the newly revised Emergency Response Guides college-wide. The guides are posted in common areas, classrooms, etc., for quick reference in the event of an emergency.

The guides may be viewed on the Facilities webpage at:

<https://www.yc.edu/v6/docs/erg.pdf>



For more information regarding emergency preparedness, please visit the Risk Management page of the Facilities website at <https://www.yc.edu/v6/facilities/risk.html>.

Driving College Vehicles

Please visit the [YC Facilities Website](#) and view the 'Driver Certification' link. Drivers are now only required to upload a copy of their valid AZ driver's license and current insurance card. All driver documents are encrypted and stored securely through Dynamic Forms. The Facilities website also includes instructions on reserving a YC vehicle and all other popular Facilities forms and information. Please email facilities@yc.edu or call 928-776-2180 if you have any questions.

Facilities New Team Members

Congratulations to Tim Peterson as the new Supervisor, Electrical and Matt Zenker Technician III, Verde Valley Campus.

Facilities is looking to fill two Tech I Grounds positions and a Tech III Electrician.

Safety and risk management now reports to Human Resources.

Well, that is all for this edition of Yavapai College Facilities Management News. Please stay tuned for the next edition containing the latest information related to projects and programs around the College.