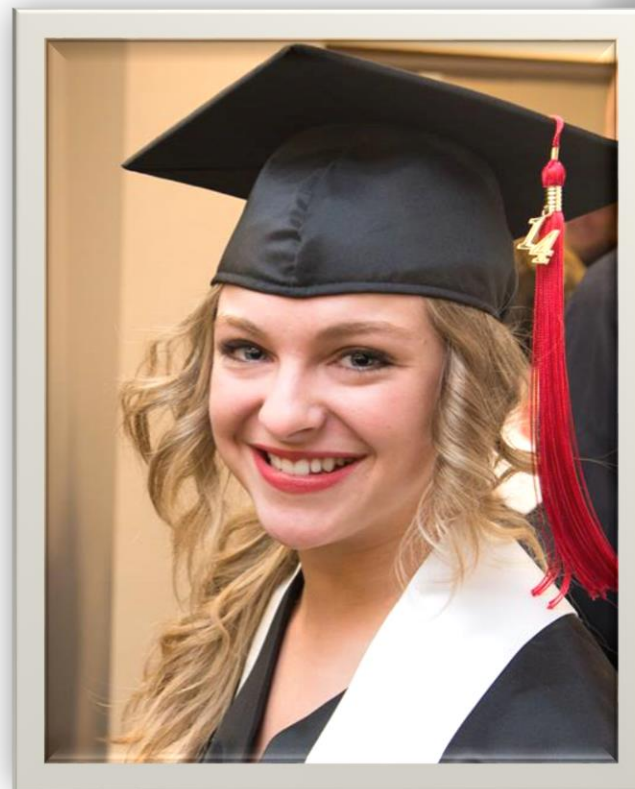




Our Journey Through Guided Pathways



Presenters:

Valerie Martin

Chad Johnson

**Co-chairs of Northark's
Guided Pathways Team**



Overview:

- What is Guided Pathways?
- Our G.P. Journey:
 - I. Where we started
 - II. Where we are
 - III. Where we are going



What is Guided Pathways?

- The idea behind guided pathways is straightforward. College students are more likely to complete a degree in a timely fashion if they choose a program early on and have a clear road map of the courses they need to take to complete a credential.
- Most colleges, rather than offering structured pathways to a degree, operate on a self-service or “cafeteria” model, allowing students to choose from an abundance of disconnected courses, programs, and support services. Students often have difficulty navigating these choices and end up making poor decisions about what program to enter, what courses to take, and when to seek help. Many drop out of college altogether.
- Guided Pathways re-packages your college’s courses and programs into highly structured, educationally coherent program maps that align with students’ goals for careers and education.



Cafeteria College

Paths to student goals unclear



Intake sorts, diverts students



Students' progress not monitored



Learning outcomes not defined and assessed across programs



 *Churning*

 *Early transfer*

 *Completion*

 *Excess credits*

 *Time to degree*

 *Skill building*

Guided Pathways College

Clear roadmaps to student goals



Intake redesigned as an on-ramp



Students' progress closely tracked



Learning outcomes/assessments aligned across programs



Churning



Early transfer



Completion



Excess credits



Time to degree



Skill building

Career/Major Interest Areas

Begin with your CAREER in mind...



Business and Entrepreneurship



Communication and Creative Arts



Culinary and Hospitality



Education



Engineering and Manufacturing



Health Care



Human and Social Services



Information Technologies



Sciences



Personal / Professional Development



Public Safety



Sports and Fitness

A-Z List of Programs

[Click on Health Care]

Health Care

Many of today's hottest careers are in the healthcare field, with career opportunities and personal satisfaction unmatched by other professions.

Nursing

Clinical Lab Science

Dental Hygiene

Diagnostic Medical Sonography

Medical Assisting

Physical Therapist Asst.

Radiologic Technology

Respiratory Care

Sports and Fitness

Lorain County Community College's nursing program gets highest accreditation rating – The Morning Journal, April 2015

[\[Click to read the article\]](#)



[Click on Nursing]

Nursing

LCCC nursing programs provide an exceptional instructional, laboratory and clinical experience to prepare graduates for a career in nursing or to help working nurses advance in their career.

Associate Degree Nursing (RN)

LPN to RN (Access in Nursing)

Paramedic to RN

Practical Nursing

University Partnership

Bachelor of Science in Nursing

Master of Science in Nursing

"As a nurse, we have the opportunity to heal the heart, mind, soul and body of our patients, their families and ourselves. They may not remember your name but they will never forget the way you made them feel."

~Maya Angelou



[Click on Associate Degree
Nursing]

Associate Degree Nursing

Become a Registered Nurse

(list job titles for someone who earns this specific credential)

Career Information

Curriculum Guide

Course Descriptions

Admission Requirements

Apply

Schedule a Visit

Live Chat

Employment of registered nurses is projected to grow 19 percent from 2012 to 2022, faster than the average for all occupations. – [Bureau of Labor Statistics](#)

Video

Image

Features of Guided Pathways

Pathways Do:	Pathways Do NOT:
<ul style="list-style-type: none">• Present <i>highly</i> recommended courses and sequence with an “opt out” feature• Recommend specific general education courses and elective courses, based on curricular relevance• Identify “on” and “off” ramps via embedded certificates and industry certifications• Allow for customization and flexibility based on each student’s unique situation	<ul style="list-style-type: none">• Replace professional guidance from faculty and advisors• Limit students’ options of courses• Require students to take any additional courses for a specific requirement that was previously satisfied• Require students to be full-time or part-time, college-ready or college-prep, online or on campus• Change due to scheduling or modality



Our G.P. Journey

- I. Where we started
- II. Where we are
- III. Where we are going

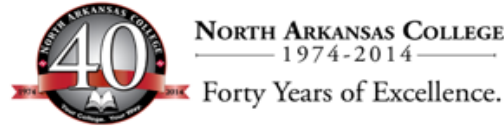


I. Where we Started:

- ❖ **Implementation Plan**
- ❖ **Formation of our Team**
 - ❖ Institution-wide
- ❖ **Communicating**
 - ❖ In-service and departmental meetings
 - ❖ Monthly G.P. team meetings
- ❖ **Creating Metamajors**



❖ Implementation Plan



Northark Guided Pathways Implementation Plan

Key Performance Indicators

- ❖ Sophomore status at year two
- ❖ Percent of part-time vs full-time
- ❖ Time to completion (number of semesters for each level, TC, CP)

Definitions

Pathway Track: This is the “high level” track (often referred to as “meta major”) that outlines “core” courses for the pathway (30-35 for AA/AS/AGS and 15 for AAS) for the first year.

Pathway Branch: This is the pathway that “branches” off from the Pathway Track that outlines the courses for the branch for the second year.

Activity	OCT	NOV	DEC	JAN	FEB	MAR	APR	MAY	JUN	JUL	AUG	SEP	OCT	NOV	DEC
Develop Implementation Plan	■														
Determine “key performance indicators”	■														
Complete data review	■														
Establish pathway tracks		■													
Create common template for pathway tracks			■												
Communicate GP with campus				■											
Finalize “core” for each pathway track					■										
Finalize 2 nd year for each pathway track						■									
Revise/update catalog															
Redesign advising process															
Redesign admission process															
Develop “follow up” process/system															
Train advisors, etc.															
Course schedule with pilot “pathway”															





NORTH ARKANSAS COLLEGE
 — 1974-2014 —
 Forty Years of Excellence.

<i>Goal One: Communicate Guided Pathways model/concept</i>				
What	How	Who	When	Desired Outcomes (measure)
Determine communication methods/approaches	<ul style="list-style-type: none"> ❖ Professional Development Committee (In-Service) ❖ Division meetings ❖ Faculty Senate 	GP Team/PD Committee	January 2015, In-Service	Common understanding of GP desired outcome/goal
Determine operational definitions (i.e., majors/programs/etc.)	<ul style="list-style-type: none"> ❖ Develop a common “language” for key concepts, i.e., majors or programs of study; meta-majors or academies, etc. 	GP Team	Oct. – Nov.	Pathways determined, common language established/added to Northark Data Dictionary
Hold College Conversations	<ul style="list-style-type: none"> ❖ Plan a College Conversation to share progress on GP 	GP Team	Late Spring 2015; Fall 2015	Enhanced understanding of the GP project
Website	<ul style="list-style-type: none"> ❖ Ensure website design supports the GP model 	Micki & Chandra	Ongoing	GP course plans are consistent across all modes of communication – portal, website, catalog
College Catalog	<ul style="list-style-type: none"> ❖ Redo the College Catalog to mirror GP model including new processes and policies 	Dr. Wiggins	Spring 2016	GP design is consistent with website, portal, student GP tracks and branch plans, etc.



❖ Formation of our Team

- ❖ Institution-wide

❖ Communicating

- ❖ In-service and departmental meetings

- ❖ Monthly G.P. team meetings



❖ **Creating Meta-majors, a.k.a "Areas of Study":**

- **STEM**
- **Health Careers**
- **Business**
- **IT**
- **L.A.S.S.**
- **Criminal Justice**
- **Education**
- **Agriculture**
- **Construction and Industry**
- **Automotive and Transportation**



II. Where we are:

❖ Areas of Study

- MAPs
 - Delegation
 - Aligning Maps
 - Common Template



❖ Delegation:

- Assigning MAPs to relevant persons
- Setting deadlines
- Verifying work
 - Checklist:



LASS	Rough draft	Template	Degree Check	2 nd Deg Check
History	x	x	x	x
English	x	x	x	x
Fine Arts	x	x	x	x
Psychology	x	x	x	x
Sociology	x	x	x	x
Speech	x	x	x	x

STEM	Rough draft	Template	Degree Check	2 nd Deg Check
Biology	x	x	x	x
Chemistry	x	x	x	
Kinesiology	x	x	x	
Physical Science	x	x	x	x
Physics	x	x	x	x
Pre Engineering	x	x	x	x
Math/Statistics	x	x	x	x

EDUCATION	Rough draft	Template	Degree Check	2 nd Deg Check
K-6	x			
4-8	x			

AGRICULTURE	Rough draft	Template	Degree Check	2 nd Deg Check
AS Agriculture – UofA				
Agbus Mgmt/Mkt		x		
Agbus Pre Law		x		
Animal Science		x		
Ag Communication		x		
Ag Economics		x		
Environ, Soil, Water Science		x		
Ag Education		x		
Pre Vet		x		

CRIMINAL JUSTICE	Rough draft	Template	Degree Check	2 nd Deg Check
Criminal Justice	x	x	x	x



BUSINESS - Transfer	Rough draft	Template	Degree Check	2 nd Deg Check
Logistics (AS Business)	x			
Management (AS Business)	x			
Accounting (AS Business)	x			
Admin Support (AS Business)	x			
Marketing (AS Business)	x			
Economics (AS Business)	x			
Ag Business				
BUSINESS - Terminal				
AAS Business Admin				
Accounting				
Admin Tech				
Management				
Logistics				
Certificates				
Accounting				
Admin Support				
Small Business Mgmt				

IT - Transfer	Rough draft	Template	Degree Check	2 nd Deg Check
IT - Terminal				
AAS IT				
Network System Admin				
Digital Media				
Certificates				
Network Systems Admin				
Certificate of Proficiency				
Network Systems Admin				



CONSTRUCTION & TECHNOLOGY	Rough draft	Template	Degree Check	2 nd Deg Check
Engineering Technology				
AAS General Technology (15 same then customized)				
Construction Equip Operation				
Construction Technology				
HVAC				
Manufacturing Technology				
Welding Technology				
Certificates				
Construction Equip Operation		X	X	X
Construction Technology		X	X	X
HVAC		X	X	X
Manufacturing Technology		X	X	X
Welding Technology		X	X	X
Engineering Technology		X	X	X
Certificate of Proficiency				
Building Performance Analyst		X	X	X
Welding Technology		X		
Construction Equip Operation		X	X	X
Construction Technology		X	X	X
Engineering Technology		X	X	X
Gas Metal Arc Welding Tech		X	X	X
HVAC		X	X	X
Manufacturing Technology		X	X	X
Shielded Metal Arc Welding		X	X	X

AUTOMOTIVE & TRANSPORT	Rough draft	Template	Degree Check	2 nd Deg Check
AAS General Technology (15 same credits then customized)				
Automotive Service				
Collision Repair				
Truck Driving				
Certificates				
Automotive Service		X	X	X
Collision Repair		X	X	X
Certificate of Proficiency				
Climate Control Manual Drive		X	X	X
Collision Repair		X	X	X
Gas Engine Repair & Brake		X	X	X
Truck Driving		X	X	X



HEALTH CAREERS	Rough draft	Template	Degree Check	2nd Deg Check
AAS				
Nursing	x	x		
Rad Tech	x	x		
Surg Tech		x	x	x
Med Lab Tech				
Paramedic		x	x	
LPN to RN		x	x	
Certificates				
Paramedic		x	x	
Practical Nursing (August start)		x	x	
Practical Nursing (January start)		x	x	
Pre-Allied Health		x	x	
Surgical Technology		x	x	x
Phlebotomy Technician		x	x	
Certificates of Proficiency				
Emergency Medical Technician		x	x	
Nursing Assistant		x	x	
Phlebotomy Technician				
Pre-Allied Health		x	x	



❖ Aligning Maps:

- Areas of study
- Common 1st and 2nd semesters



Psychology Map
(U of A, ASU, and ATU Transfer)
Associate of Arts (60-62 credits)

Fall 1 Semester

Code	Course Name	Credits	Completed
ENGL 1013	English Composition I	3	
MAT 1223 or MAT 1243	*College Algebra or Quantitative Literacy	3	
MUS1003 OR ART 1003 OR DRAM 1003	Music Appreciation OR Art Appreciation OR Theatre Appreciation	3	
HIST 2003 or HIST 2013 or PLSC 2003	US History I or US History II or American National Government	3	
PSYC2003	General Psychology	3	
		15	

Spring 1 Semester

Code	Course Name	Credits	Completed
ENGL 1023	English Composition II	3	
Science Elective	See list	4	
Social Science Elective	See list	3	
PHIL 1003	Intro to Philosophy	3	
Humanities Elective	See list	3	
	Total	16	



Sociology Map
(U of A, UCA, ASU and ATU Transfer)
Associate of Arts (62 credits)

Fall 1 Semester

Code	Course Name	Credits	Completed
ENGL 1013	English Composition I	3	
MAT 1223 or MAT 1243	College Algebra or Quantitative Literacy	3	
ART 1003 or DRAM 1003 or MUS 1003	Art Appreciation or Theatre Appreciation or Music Appreciation		
HIST 2003 or HIST 2013 or PLSC 2003	US History I or US History II or American National Government	3	
SOC 2013	Intro to Sociology	3	
	Total	15	

Spring 1 Semester

Code	Course Name	Credits	Completed
ENGL 1023	English Composition II	3	
Science Elective	See list	4	
Social Science Elective	See list	3	
SOC 2013	Social Problems	3	
Directed or Academic Elective	See list	3	
	Total	16	





History Map
(U of A, ASU, and ATU Transfer)
Associate of Arts (62 credits)

Fall 1 Semester

Code	Course Name	Credits	Completed
ENGL 1013	English Composition I	3	
MAT 1223 or MAT 1243 or higher	College Algebra or Quantitative Literacy or higher	3	
HIST 2003	US History I	3	
Social Science Elective	See list	3	
ART 1003 or DRAM 1003 or MUS 1003	Art Appreciation or Theatre Appreciation or Music Appreciation	3	
Social Science Elective	See list	3	

15

Spring 1 Semester

Code	Course Name	Credits	Completed
ENGL 1023	English Composition II	3	
Science Elective	See list	4	
Social Science Elective	See list	3	
PLSC 2003	American National Government	3	
Humanities Elective	See list	3	

16



Fine Arts Map
(U of A, ASU and ATU Transfer)
Associate of Arts (62 credits)

Fall 1 Semester

Code	Course Name	Credits	Completed
ENGL 1013	English Composition I	3	
MAT 1223 or MAT 1243	College Algebra or Quantitative Literacy	3	
HIST 2003 or HIST 2013 or PLSC 2003	US History I or US History II or American National Government	3	
Social Science Elective	See list	3	
ART 1003	Art Appreciation*	3	
Total		15	

Spring 1 Semester

Code	Course Name	Credits	Completed
ENGL 1023	English Composition II	3	
Science Elective	See list	4	
Academic Elective	See list	3	
PHIL 1003	Intro to Philosophy	3	
Academic Elective	See list	3	
Total		16	



❖ Common Template:

- Identify MAP
- List Advisor
- Link to Career Opportunities
- Link to Application
- Developmental Ed disclaimer
- Semester by Semester Plan
- List of Electives





My Academic Plan (MAP) – Pre Engineering
Degree: Associate of Science – Pre Engineering
Major Code: 3140

Revised 03-21-2016

Advising: Valerie Martin, (870)391-3327, vmartin@northark.edu OR
Advising Center: M184 South campus (870)391-3115

This MAP serves as a guideline to graduate in 4 semesters. The Key Milestones/Prerequisites listed for each semester highlight significant achievements that must be completed in the degree track. Students who do not follow the four semester plan and/or who do not complete identified milestones may jeopardize their financial aid (if applicable) and/or delay graduation. Please refer to the Northark catalog or advisor for any changes or modifications which may have occurred after the publication of this document.

- Program Application Required: No
- Career Opportunities with this degree: create link
- Program Description: create link

Academic Preparedness

Northark recognizes the important connection between student success and academic preparedness. Students may be required to complete one or more of the following courses before enrolling in college level courses. *Summer and/or intercession courses may be required to graduate within 4 semesters. Developmental course credits earned do not count towards degree completion requirements.*

Developmental Education Courses

Course #	Course Title	Credits
CP 0816	Intro to Language	6
CP 0912	College Reading	2
CP 0913	Fundamentals of Language	3
CP 0923	Foundations of Math	3
CP 0933	Foundations of Algebra	3



ENGL 1013	ENGL 1013	English Composition I		3	
MAT 1233 or	MAT 1203	Trigonometry or	MAT 1223 with a 'C' or higher or MAT ACT of 26	3 or	
MAT 1223 and MAT 1233	MAT 1103 MAT 1203	College Algebra and Trig	Math ACT of 21 or higher OR CP 0933 or MAT 1123 with a 'C' or higher	6	
BIOL 1014 or GEOL 1014	BIOL 1014 GEOL 1114	General Biology or General Geology	Note: If student doesn't need College Algebra nor Trig then take both Biology AND Geology	4	
ART 1003 or DRAM 1003 or MUS 1003	ART 1003 DRAM 1003 MUS 1003	Art Appreciation or Theatre Appreciation or Music Appreciation		3	
GNEG 1103 UofA		Intro to Engineering		3	
				Total	16-19

Semester 2

Course #	ACTS #	Course Title	Milestones/Prerequisites	Credits	Grade
ENGL 1023	ENGL 1023	English Composition II	"C" or higher in English 1013 or 1113	3	
MAT 2204	MAT 2405	Analytical Geometry & Calculus I	MAT 1223 and 1233 with "C's" or better in each OR Math ACT of 26	4	
CHEM 1415	CHEM 1414	College Chemistry I	CP 0933 with 'C' or higher OR Math ACT of 21	5	
HIST 2003 or HIST 2013 or PLSC 2003	HIST 2113 HIST 2123 PLSC 2003	US History I or US History II or American National Government		3	
				Total	15

Semester 3

Course #	ACTS #	Course Title	Milestones/Prerequisites	Credits	Grade
MAT 2304	MAT 2505	Analytic Geometry and Calculus II	MAT 2204 with a 'C' or higher	4	
SPCH 1313	SPCH 1003	Fundamentals of Oral Communication		3	
CHEM 1425	CHEM 1424	College Chemistry II	CHEM 1415 AND MAT 1223 with 'C' or higher in each	5	
Social Science Elective		See list		3	



Semester 4

Course #	ACTS #	Course Title	Milestones/Prerequisites	Credits	Grade
PHYS 2144		University Physics I	MAT 2204 with a 'C' or higher	4	
Social Science Elective		See list		3	
MAT 2404	MAT 2603	Analytic Geometry and Calculus III	MAT 2304 with a grade of "C" or better	4	
ECON 2313	ECON 2103	Principles of Macroeconomics		3	
GEOL 1014 or BIOL 2014	GEOL 1114 BIOL 2004	General Geology OR Microbiology	BIOL 1014 AND CHEM 1415 with a grade of C or higher	4	
			Total	18	

Grand Total 64-67

These courses will transfer to many colleges and universities. The following presumes transfer to frequently selected institutions; Arkansas Tech University (ATU), University of Arkansas Fayetteville (UofA), or Arkansas State University Jonesboro (ASU). Please check with your advisor for more information.

Social Science Electives

ECON 2323	Microeconomics	ATU only
GEOG 2003	Human Geography	UofA only
HIST 1113	World Civ I	
HIST 1123	World Civ II	
HIST 2003	US History I	
HIST 2013	US History II	
SOC 2013	Introduction to Sociology	
PSYC 2003	General Psychology	



❖ Student Services

- Onboarding Students
 - Application
 - Career Counseling and Advising



III. Where we are going:

- ❖ Fall 2016 Implementation
 - First semester Freshmen

- ❖ Tracking
 - New SIS

- ❖ Faculty Advising
 - Second semester



Questions?





Thank you

Northark is open and inclusive of everyone.

Valerie Martin

vmartin@Northark.edu

Chad Johnson

cjohnson@Northark.edu

Please visit us online at www.northark.edu



Allied Health



Arts & Humanities



Business & Technical
Programs