

Yavapai College 2016-2017 Environmental Scan



**Prepared for the Yavapai College District
Governing Board, September 12, 2016**

by

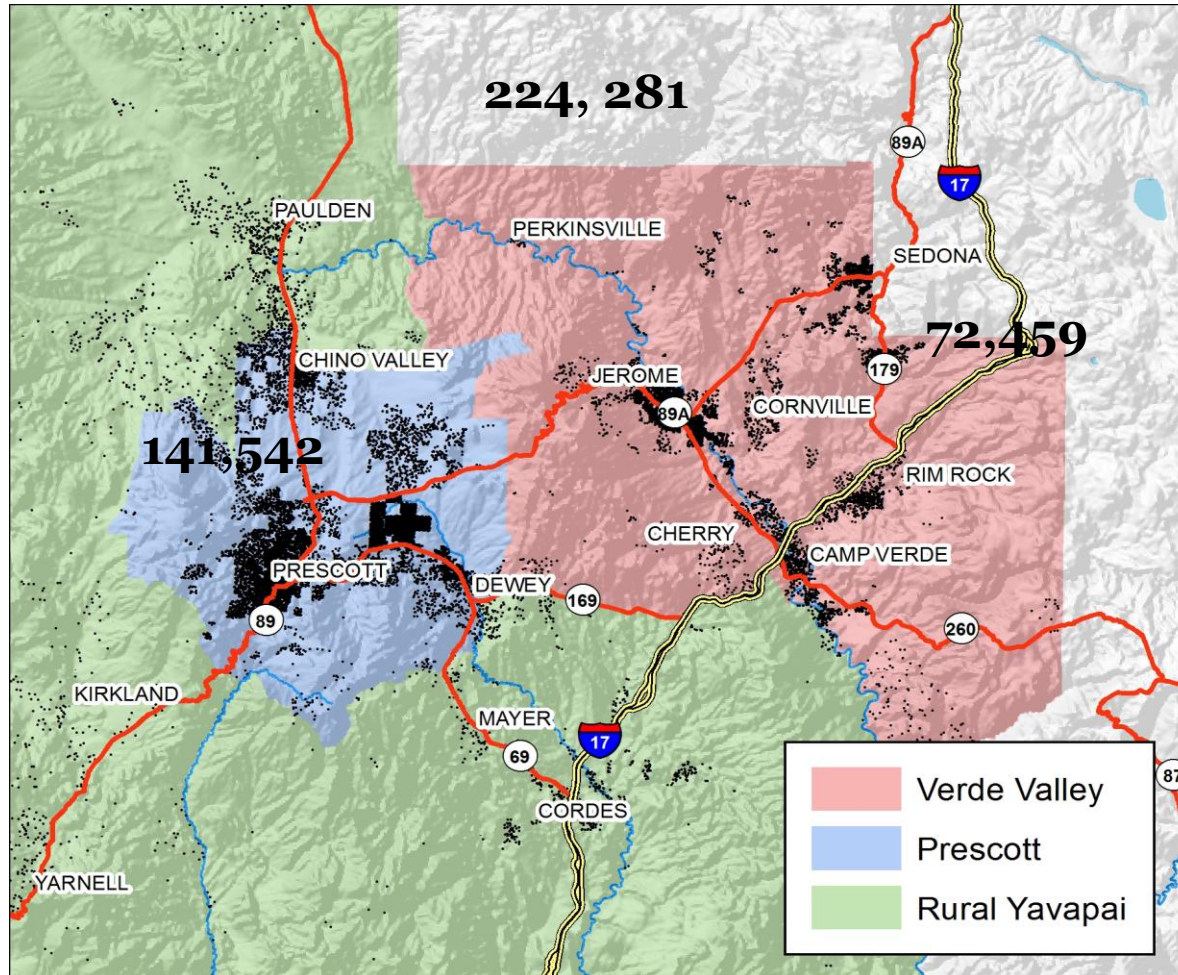
Tom Hughes

Institutional Effectiveness and Research

Alexandria Wright

Regional Economic Development Center

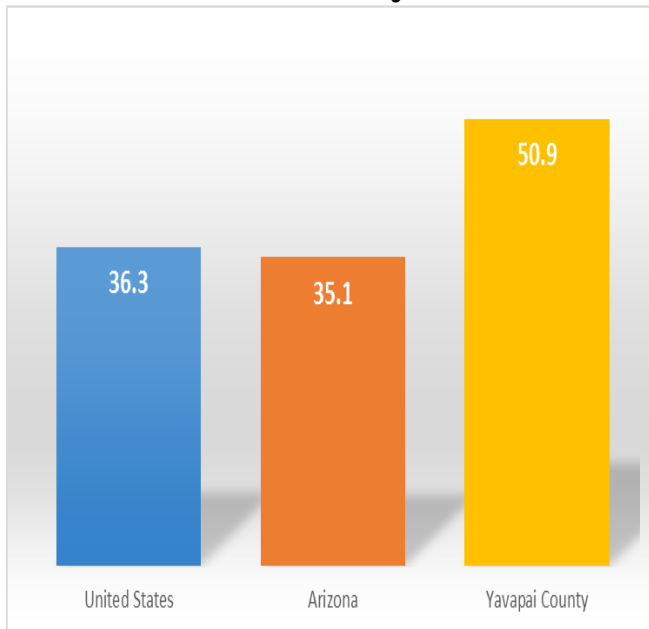
Yavapai County Population



County Population Trends



2016 Median Age

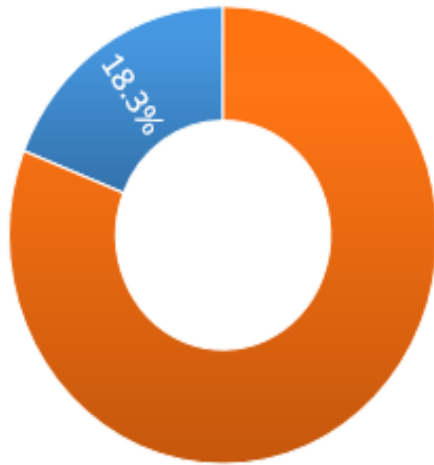


- Slow growth
- Rapidly aging population
- Shrinking workforce age population
- Stagnant traditional college age population
- Decreasing younger population

Poverty

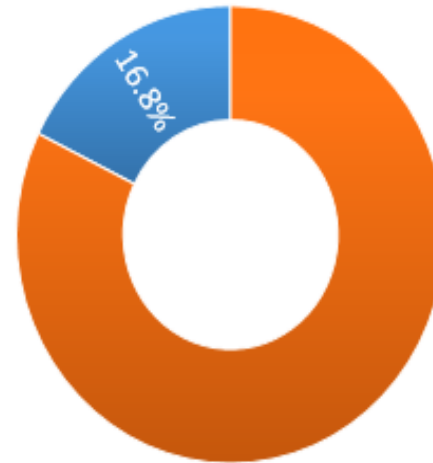


Arizona



Poverty Non-Poverty

Yavapai County



Poverty Non-Poverty

Free & Reduced Lunch



SiteName	County Area	Total Enrolled as of Last Day in October	Published F/R %	F/R #	County Area F/R #	County Area Enroll	County Area %
Bagdad Middle / Senior High School	Balance of County	234	44%	103			
Mayer High School	Balance of County	206	84%	173			
Seligman High School*	Balance of County	145	69%	100	376	585	64%
Camp Verde High School	East County	419	52%	218			
Mingus Union High School	East County	1203	43%	517			
Sedona Red Rock High School	East County	503	33%	166	901	2125	42%
Chino Valley High School	West County	754	52%	392			
Bradshaw Mountain High School	West County	1606	52%	835			
Prescott High School	West County	1593	26%	414	1641	3953	42%
		6663	44%	2919			

Competition



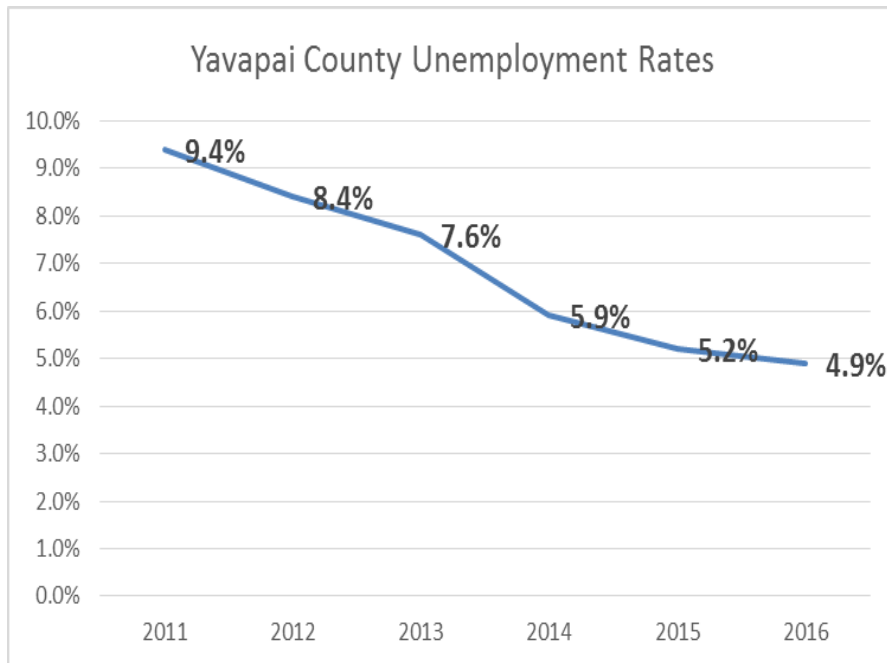
WIZARD EDUCATION

Economic



Recession Recovery

Threats & Opportunities



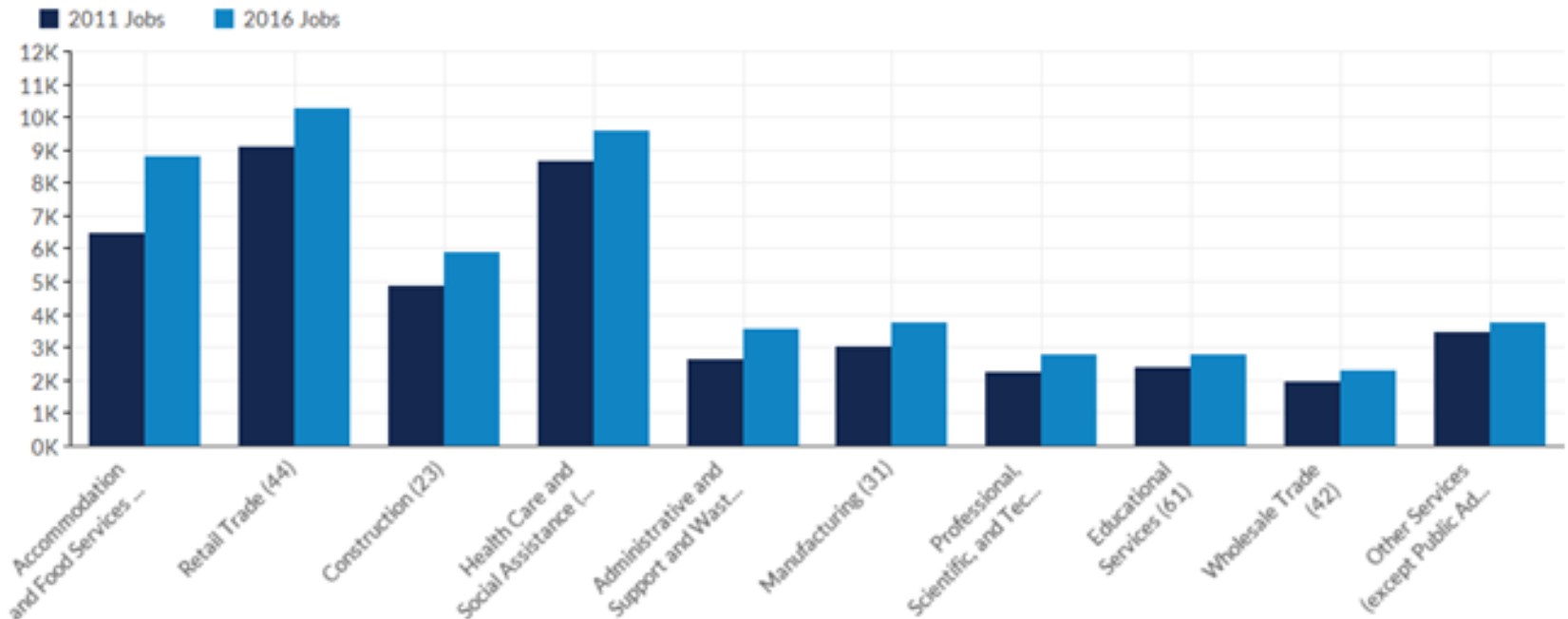
- **Declining State support of higher education**
- 6 in 10 jobs will require some postsecondary training
- 42 million job—college, but less than a BA

Labor Force



Fastest Growing Industries in Yavapai County Over 5 Years

All sectors listed in this table have grown between 350 and 2,300 jobs in the past five years.



Source: Arizona Department of Administration Employment and Populations Statistics Division, QCEW, and U.S. BEA and U.S. BLS.

Technology

Opportunities



Sun Corridor Network
Arizona Research and Education Network



moving high
bandwidth data
at high speeds

Challenges

Colleges and universities are prime cyber attack targets

Bricker & Eckler, LLP

May 2016

- Financial Data
- Open Communication and Collaborative

Education



Challenged K-12

Underprepared Students

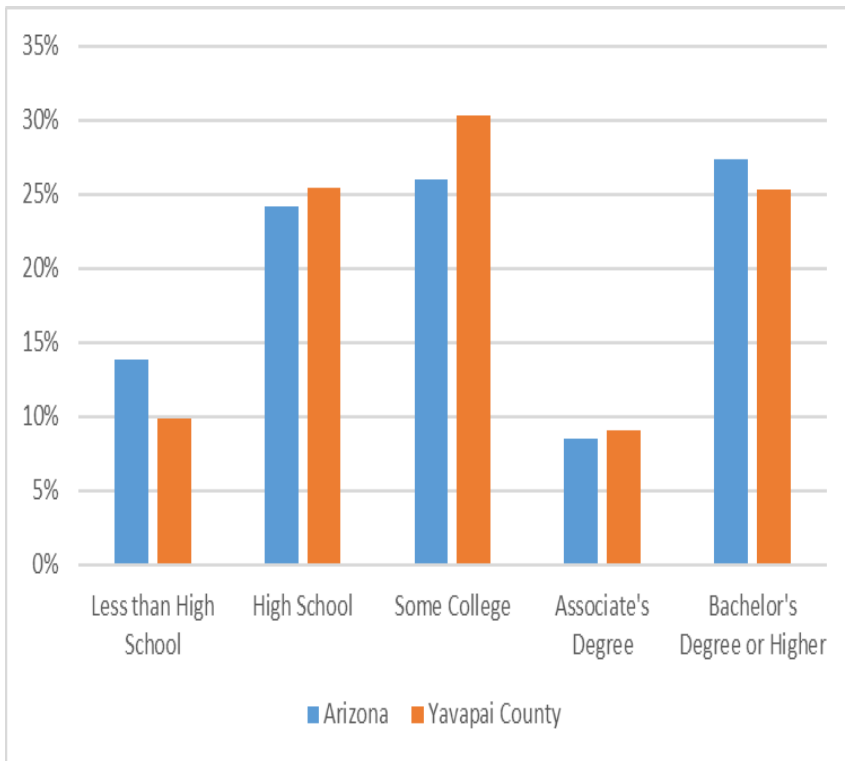
50

47

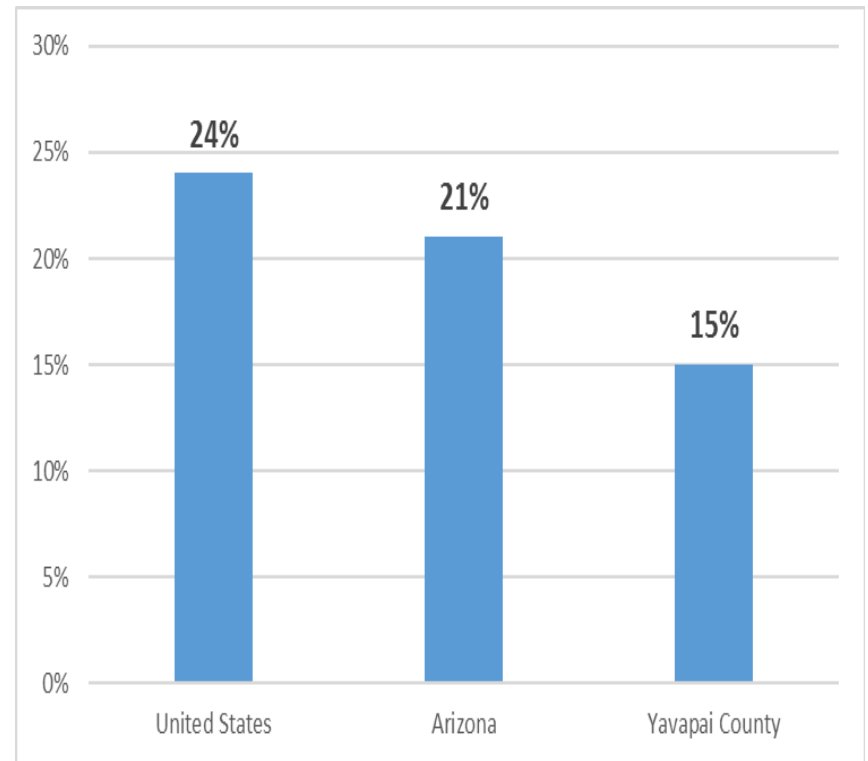


Education and Degree Attainment

Educational Attainment (pop 25+)



BA Attainment (pop 25-64)



YC Locations & Community Resources



Campuses and Sites

- Campus
- Site

Community Ed and OLLI

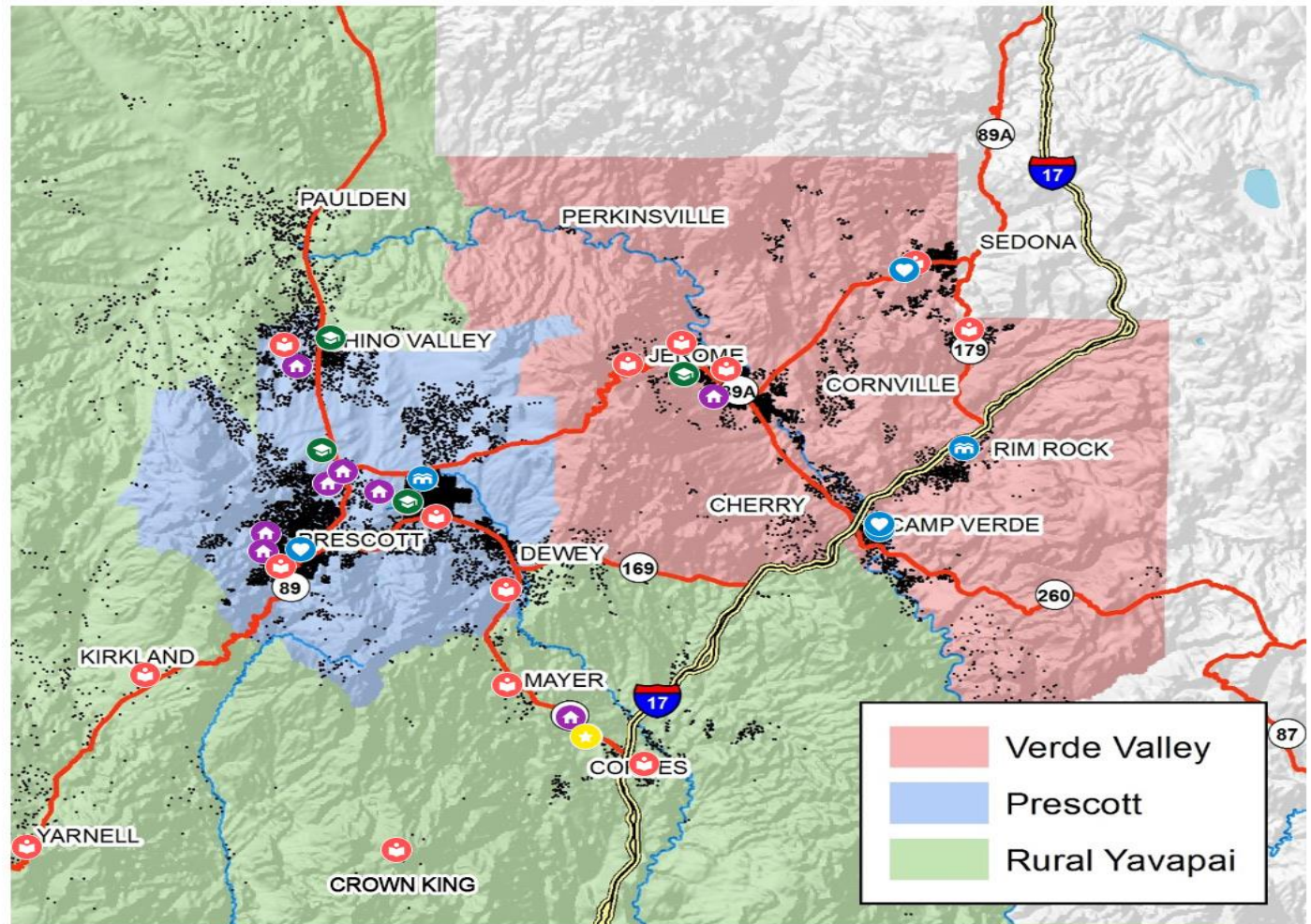
- Community Ed
- OLLI

High Schools

- All items

Public Libraries

- All items



Questions?

