

Yavapai College **BUDGET-IN-BRIEF**

Fiscal Year Ending June 30, 2026



Yavapai
COLLEGE

TABLE OF CONTENTS

From the President	3
Yavapai College at a Glance	4
Financial Facts	5
Yavapai College Organization Chart; DGB Members	6
FY2026 Initiatives	7
Budgeted Revenues	8
• Property Tax	9
• Tuition & Fees	10
• State Government	11
Budgeted Expenditures by Fund	12
• General Fund	13
• Restricted Fund	14
• Debt Fund	15
• Capital Fund	16-17
• Auxiliary Fund	18-19

MISSION

Yavapai College transforms lives and strengthens the local economy through education.

VISION

Yavapai College ensures our community is a premier place to learn, work, and live.

PRIORITIES

Yavapai College exists so communities within Yavapai County have access to and are equipped with the knowledge and skills to improve quality of life. The College will achieve these results at a cost the Board believes is justifiable.

1. Education:

- Job seekers
- Transfer students
- Adult Basic Education
- Lifelong learners
- Maximize persistence and completion
- Students understand how to access financial resources and support programs

2. Economic:

Communities in Yavapai County are supported in their efforts to lead economic development, with emphasis on generating and sustaining economic base jobs.

3. Community:

Yavapai County residents have access to social and cultural opportunities.

PHOTOS TOP TO BOTTOM: Prescott Campus, Verde Valley Campus, Prescott Valley Center, Career & Technical Education Center and Sedona
COVER PHOTO: Chino Valley Center



from the **PRESIDENT**

The release of our Budget for the 2025-2026 fiscal stands as a testament to our unwavering commitment to transparency and fiscal responsibility, even as we navigate the ongoing complexities of higher education funding, economic trends, and political shifts in Arizona and across the nation.

The current political climate in the U.S. has brought increased scrutiny and policy shifts affecting higher education institutions. Federal and state funding structures continue to evolve, influencing financial aid, tuition policies, and program funding. Discussions around free community college initiatives, student loan forgiveness, and workforce development funding have created both opportunities and uncertainties. As debates on academic freedom and institutional governance unfold, we remain steadfast in our commitment to providing high-quality education while advocating for policies that support our students and faculty.

Driven by housing affordability, inflation remains a persistent challenge, influencing the cost of living. Arizona has continued to experience significant increases in housing costs, placing financial pressure on individuals and families, including our students and employees. These economic factors impact not only our institutional operations but also the daily lives of those who are at the heart of our mission.

The rising costs of goods and services present additional hurdles that require innovative approaches and sound fiscal management. At Yavapai College, we remain dedicated to balancing our pursuit of educational excellence and affordability for all students with the obligation to provide a good return on investment for taxpayers.

Building on the success of our first baccalaureate degree in Business, we launched our Bachelor of Science in Nursing, RN to BSN Program and received approval for our baccalaureate degree in Computer Science from the Higher Learning Commission. We successfully completed our HLC visit and are awaiting approval from HLC's Institutional Actions Council for final approval of our 92-credit hour baccalaureate degree in Business. Expecting approval this spring, we will be the first community college in the nation to offer an optimized baccalaureate degree which increases access and reduces costs for our students.



We take considerable pride in our achievements, including ranking at the top in Arizona for graduation rates, Arizona General Education Curriculum completion rates, successful learner outcomes within six years, and occupational learners earning postsecondary credentials within one year of program completion.

We honor the trust placed in us by the public and uphold it through high-quality programs, responsiveness to industry needs, integrity in our actions, and efficient use of our resources. I extend my sincere gratitude to all who have contributed thoughtfully to the preparation of this budget. Together, we will not only withstand economic and political challenges but emerge stronger, more agile, and more determined in our pursuit of educational excellence.

Thank you for your continued dedication to Yavapai College's mission and vision. Let us move forward together to inspire, empower, and transform lives through education.

A handwritten signature in black ink that reads "Lisa B. Rhine".

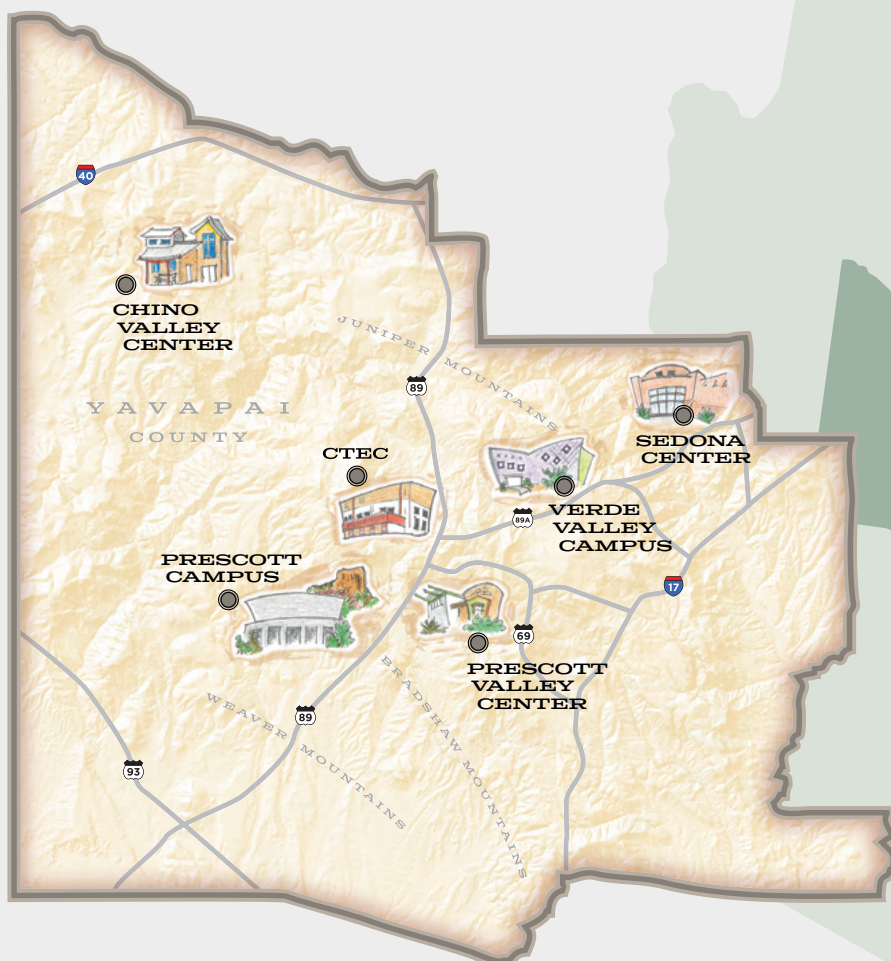
Lisa B. Rhine, Ph.D.
Yavapai College President

YAVAPAI COLLEGE AT A GLANCE

Institutional Profile

Per the District Governing Board, YC exists to provide quality educational opportunities, to support economic development, and to enhance cultural opportunities for our communities. The College will achieve these as a cost the Board believes is justifiable.

- Over 10,000 credit and non-credit students choose Yavapai College every year.
- YC offers 7 Associates Degrees in two broad categories of baccalaureate transfer or career & technical education. Transfer degrees include Associate of Arts, Associate of Arts in Education, Associate of Arts in Fine Arts, Associate of Business, Associate of General Studies, and Associate of Science. The Associate of Applied Science prepares graduates to enter the workforce in a variety of career & technical fields. In addition, the College offers more than 75 certificates in career and technical fields. Finally, the College has begun offering baccalaureate degrees in Business, Nursing, and Computer Science.
- Unique destination programs include Aviation, Gunsmithing, Northern Arizona Regional (Police) Training Academy, the award-winning Southwest Wine Center, the Sedona Culinary Institute, and 3D Construction.
- Yavapai College is accredited by the Higher Learning Commission. As such, the majority of our general education classes are accepted at public universities across the nation, which saves students money should they decide to continue their studies beyond an Associate's Degree. In addition, accreditation allows our students to access federal grants and loans.
- More than 1 in 3 Yavapai County high school graduates choose to attend YC.
- In addition to offering classes in high schools and online, YC services the 8,100 square miles of Yavapai County through 800,000 sq. ft of buildings on 260 acres of property at 6 locations (see below). Per an independent assessment, YC is one of the better-maintained colleges—we do this because it lowers the total costs of ownership.



YAVAPAI COUNTY

FINANCIAL FACTS

LOW TUITION



**3RD LOWEST COLLEGE IN AZ,
WHICH HAS 4TH LOWEST TUITION IN US**

LOW COST PER STUDENT



- PER AZ CONSTITUTION, COST IS SAME OR LOWER THAN 1980 WHEN ADJUSTED FOR INFLATION
- NEAR NATIONAL AVERAGE

LOW PROPERTY TAXES



- AVERAGE RATE FOR AZ COMMUNITY COLLEGES
- AZ IS 6TH LOWEST IN US

STRONG CREDIT RATINGS



- MOODY'S
- STANDARD AND POOR

WELL-MAINTAINED FACILITIES



**BEST-IN-CLASS NET
ASSET VALUE RATINGS**

VALUE

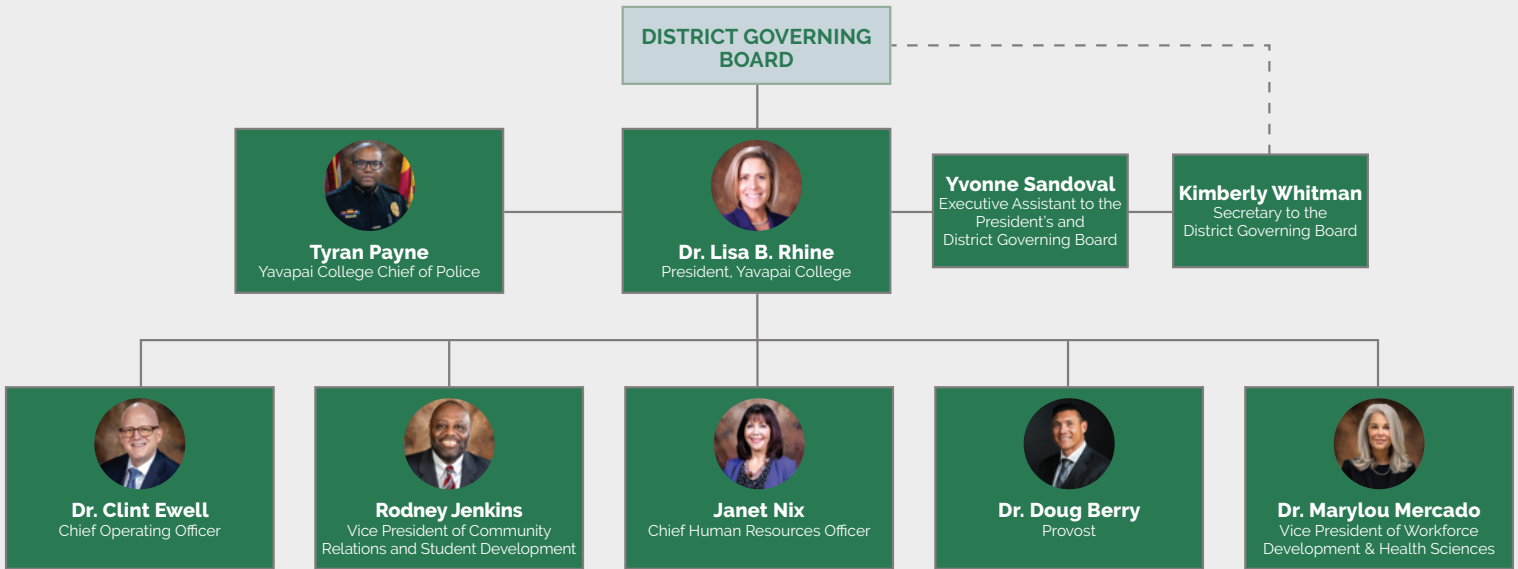


\$312,000
MORE EARNINGS
WITH ASSOCIATE
DEGREES



\$1 = \$7.80
TAXPAYERS
INVESTMENT

ORGANIZATION CHART



District Governing Board



William Kiel
District 1

Badger, Bagdad, Castle Hot Springs 1 and 2, Congress, Copper Basin, Hidden Valley, Hillside, Holiday/Well Fargo, Kirkland, Mile High, Miller Valley East and West, Montana, Mountain Club, Northside, Pine Knoll, Pine Lakes, Ponderosa, Prescott Heights, Prescott Northwest, Prescott South, Prescott Southwest, Prescott West, Rincon, Rose Lakes, Senator, Skull Valley, Taylor Hicks, Thumb Butte/Dearing Pk, Walnut Grove, White Spar, and Yarnell.



Deb McCasland
Board Chair
District 2

Aqua Fria, Beaver Creek, Camp Verde 1 and 2, Canyon, Cherry Creek, Cordes Lakes, Cornville, Crown King, Humboldt, Mayer, Middle Verde, Montezuma, Prescott Country Club, Stoneridge, Sugarloaf and Verde Lakes.



Toby Payne
District 3

Big Park, Bridgeport 1 and 2, Clarkdale, Clemenceau, Coffee Pot, Cottonwood, Fir, Jacks Canyon, Jerome 1 and 2, Mingus, Orchard, Quail Springs, Red Rock 1 and 2, Red Rock East, Red Rock West, Verde Village, Western, and Wild Horse.



Patrick Kuykendall
District 4

Antelope, Ashfork, Big Chino, Camp Wood, Chino Valley 1 and 2, Country Park, Cougar, Coyote Springs, Deep Well, Drake, Granite, Perkinsville, Pinon Oaks, Sandretto, Seligman, Shadow Valley, Spruce, Williamson Valley, West Chino, and Willow.



Steve Bracety
Board Secretary
District 5

Castle, Diamond Valley, Glassford, Granville, Groom Creek, Horseshoe, Lynx Creek, Mountain View, Prescott Valley 1/Navajo, Prescott Valley 2, Pronghorn View, Roundup, Superstition, and Yavapai Hills.

FISCAL YEAR 2026 STRATEGIC INITIATIVES



■ Prison Education Program

YC has been selected as a partner by the Arizona Department of Corrections to offer online coursework in 3 state prisons. YC now needs to update courses, technology and support services to meet ADoC and Higher Learning Commission requirements.

■ Expand Health Sciences Programs

Yavapai County is a "Silver City" per McKinsey Consulting, with the vast majority of growth coming from the in-migration of retirees. As such, the demand for Healthcare services will grow, and YC needs to be poised to fill that additional demand. YC will use Bureau of Labor data and discussions with Health partners to inform decisions regarding new programs and space needs.

■ Offer More OER Courses

Students do better in class when they have access to the course learning materials. However, many students on a budget cannot afford the book. Open Educational Resources allow colleges to provide learning materials for low cost or no cost. So far, YC has converted roughly 40% of courses to OER, saving students over \$1M.

■ Artificial Intelligence (AI) & Virtual Reality (VR)

AI and VR are no longer solely the domain of science fiction, but have entered the workplace. YC needs to take advantage of these new tools to enhance how we deliver programs and services. YC also plans to integrate AI & VR into our curriculum, so students know how to appropriately utilize these tools when they enter the workforce.

■ Academic Program Prioritization

Per the direction of the District Governing Board, YC is reviewing its portfolio of Programs to ensure we offer the right mix of programs that optimize the value created to our services district.

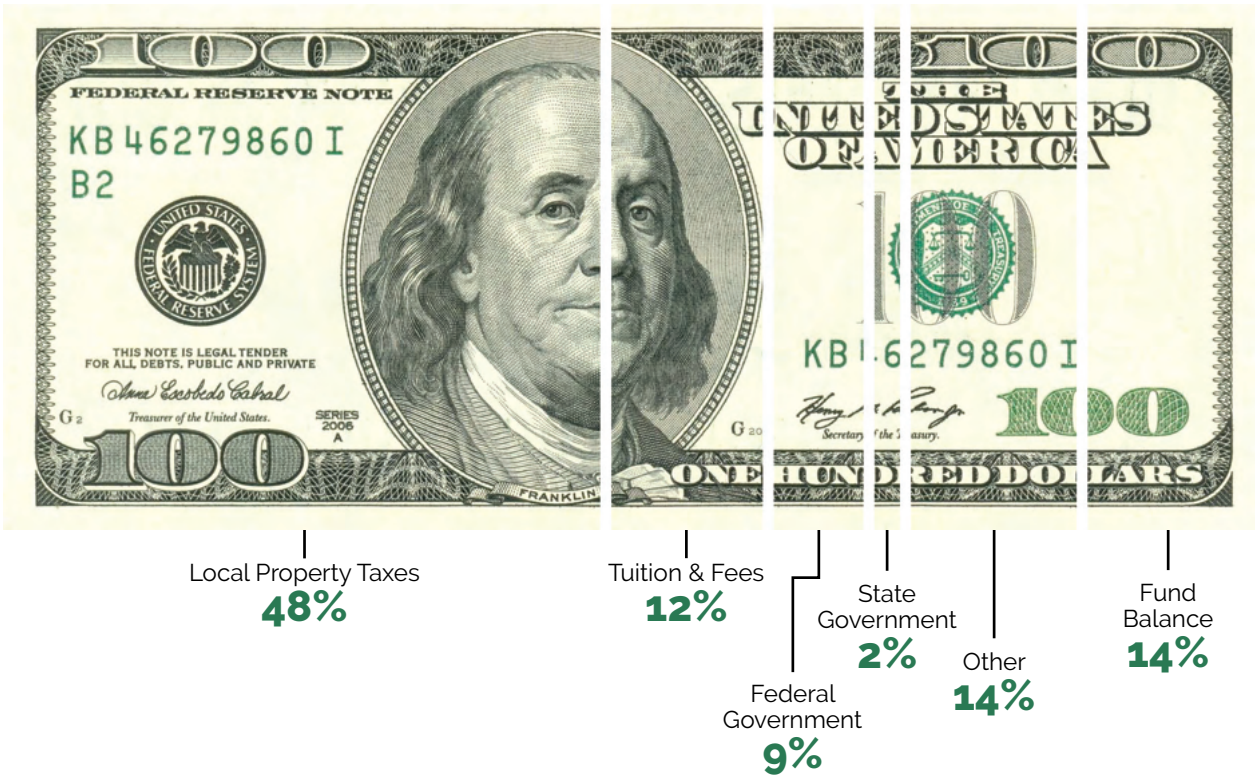
YC continues to add programs and degrees

For full list of College-wide initiatives, please see the Strategic Plan chapter of Yavapai College's Fiscal Year 2025-2026 Budget

BUDGETED REVENUES

Yavapai College has a diversified revenue structure consisting of local property taxes, student tuition and fees, federal and state aid, and other institutionally generated revenues.

SOURCES	AMOUNT
Local Property Taxes	\$ 58,045,800
Tuition & Fees	15,042,100
State Government	2,637,000
Federal Government	11,302,700
Other	16,552,570
Fund Balance	16,825,130
TOTAL	\$ 120,405,300

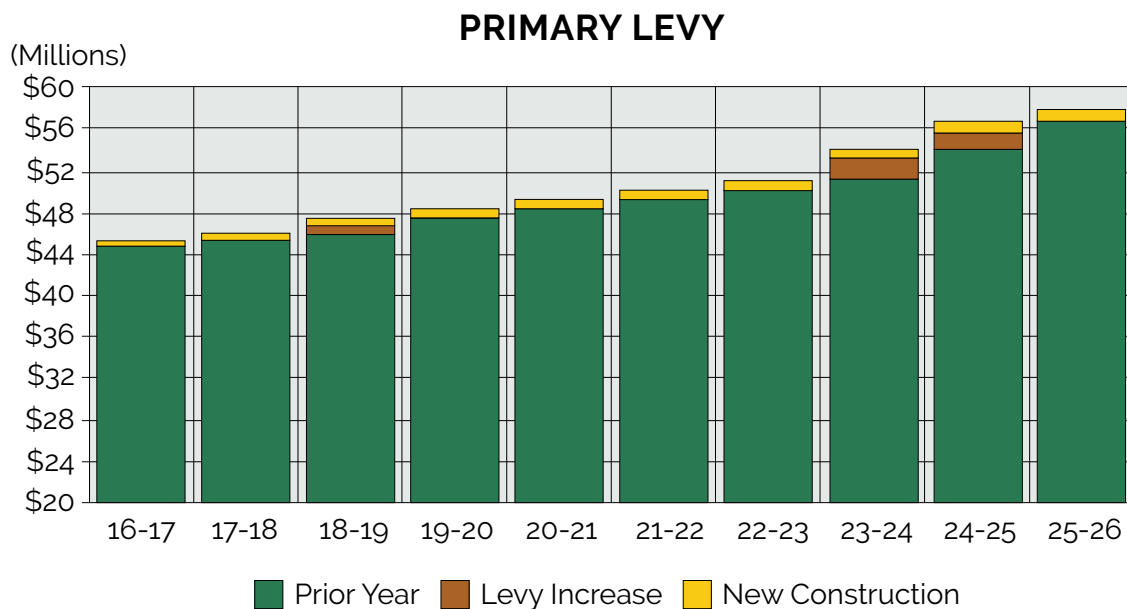




Property Taxes

Yavapai College has the lowest effective property tax rates in Arizona.

- Per taxfoundation.org, AZ has 6th lowest property tax.
- YC property tax rates are near the average for AZ Community Colleges
- Through sound Fiscal Stewardship, YC has been able to limit property tax increase to roughly 1% per year, which is half of the allowable amount. This shared investment supports our neighbors and our local economy. The Board did not raise taxes for FY25-26.



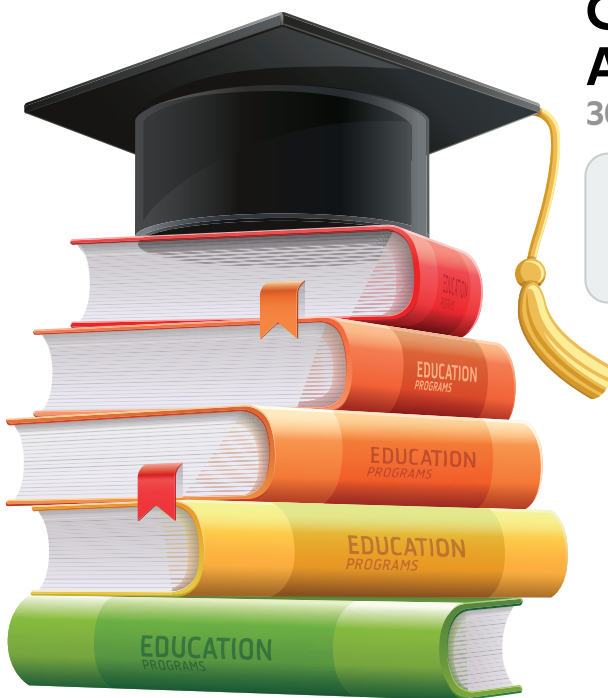
Tuition & Fees

In accordance with the Constitution of Arizona, YC strives to keep tuition as low as possible without impairing the quality of programs and services.

Since Yavapai County's median income is 16% below the national average, YC tuition is purposely set below its national community college peers to keep the college dream affordable and accessible. In addition, YC offers scholarships and discounts to support strategic goals.

- Roughly \$1.5M in discounts to high school students taking face-to-face college courses
- YC Promise allows recent high school graduates to earn a free Associate Degree if they complete within two years. Similarly, Workforce Promise is available to any county resident who completes their first career technical education degree from YC within two years
- 20% discount to encourage students to attend full time
- 50% discount to older residents as a thank you for their financial support they pay in property taxes
- 50% discount for high school students taking online college courses


\$113
PER CREDIT
16% BELOW THE NATIONAL AVERAGE



Cost Comparison: Annual Tuition & Fees 30 Credits/FY2026

\$2,712

Yavapai College Tuition

\$4,050

National Community College average

\$12,974

Arizona 4-Year University average

[Rev. May2025]



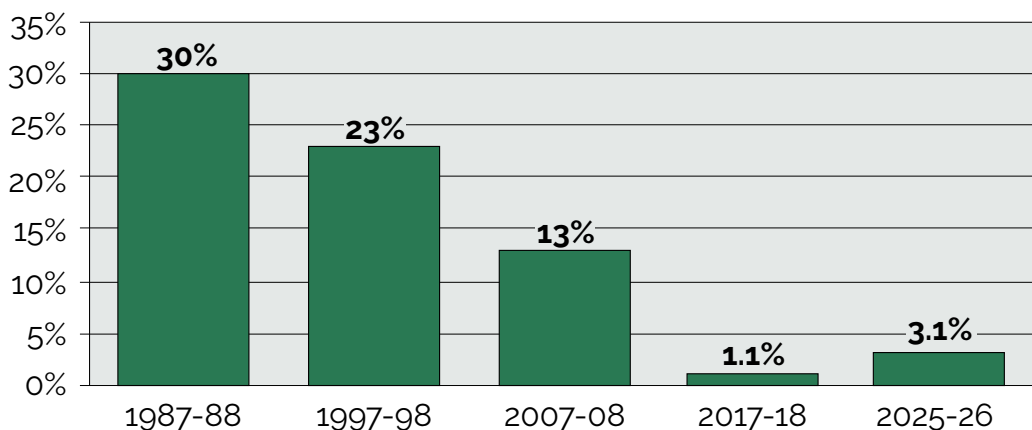
State Government

State appropriations are monies received from the State of Arizona. The monies are used to support operations and specific programs within the College.

REVENUE SOURCES	AMOUNT
Maintenance & Operations	\$ 555,900
Rural Community College Aid	1,833,600
Science Technology Engineering & Math (STEM)	710,200
Prop 301 (to invest in Workforce Development programs)	1,562,000
Prop 207 (workforce development, job training, CTE, STEM)	2,970,000
Adult Basic Education	174,000
Other	73,000

Arizona has steadily defunded community colleges over the past 30 years. Today YC receives 6.5% of its total revenues from the state. Only 3.1% of its unrestricted revenues come from the state.

ARIZONA DEFUNDED COMMUNITY COLLEGES (State Appropriations of Unrestricted Funds)





BUDGETED EXPENDITURES BY FUND

General Fund: This fund reflects the operating budget needed to conduct the day to day business of the College.

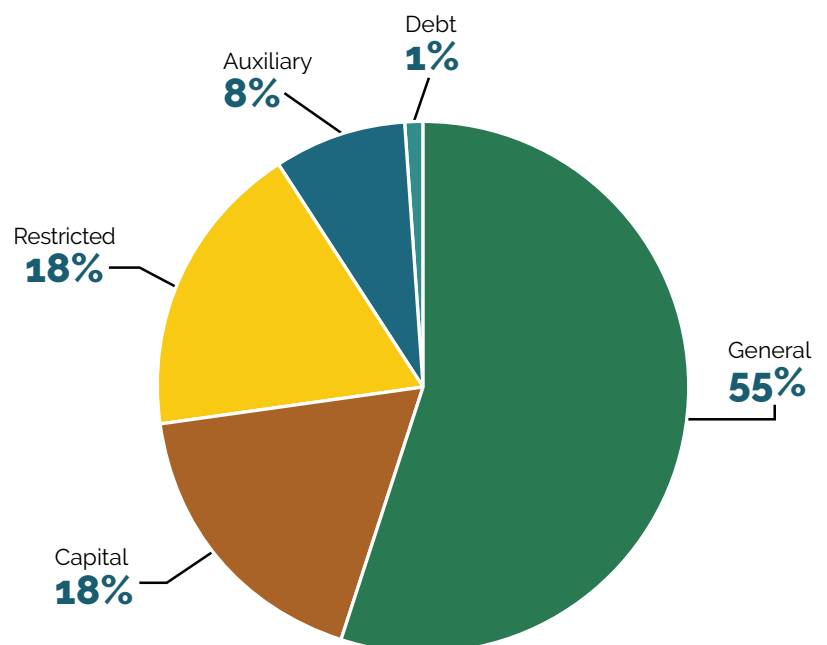
Restricted Fund: This fund accounts for monies that were given to the College on the condition they be used for a specific purpose, such as gifts, grants, or contracts.

Debt Fund: This fund tracks the issuance or repayment of principal, interest, and other related fees for long term debt.

Capital (Plant) Fund: This fund records large improvements in building, infrastructure, and grounds, which are then depreciated over time.

Auxiliaries Fund: This fund tracks revenues and expenses for non-core services provided to students, employees, and the general public.

FUND	AMOUNT
General	\$ 65,974,600
Restricted	21,772,500
Debt	1,577,900
Capital	21,973,700
Auxiliary	9,106,600
TOTAL	\$ 120,405,300



General Fund

This fund reflects the operating budget needed to conduct the day-to-day business of the College.

Instruction: Educational activities that occur in the classroom or lab.

Public Service: Non-instructional activities which primarily benefit people external to the institution such as YCPAC.

Student Services: Support services to recruit students and help them enroll in the right program of study, as well as activities that support the students' development outside of the classroom.

Academic Support: Those services which directly support Instruction such as libraries, galleries, deans, and audio-visual.

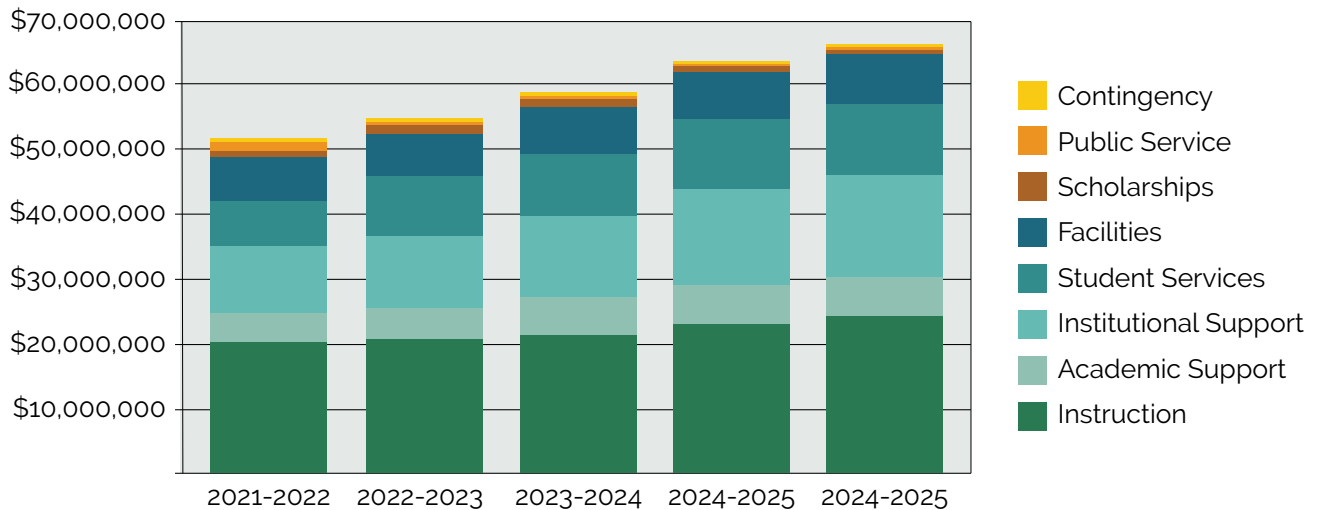
Institutional Support: Those administrative functions needed to plan and manage the college including executives, accounting, human resources, information technology, marketing, etc.

Facilities: Those activities associated with the operations of the college's physical facilities including maintenance, grounds, and custodial services.

Scholarships: Financial aid awarded to students to lower their costs of attending college.

GENERAL FUND	AMOUNT
Instruction	\$ 24,154,100
Academic Support	6,274,500
Institutional Support/ Administration	15,483,200
Student Services	10,930,600
Facilities	7,654,200
Scholarships	685,100
Public Service	25,900
Contingency	767,000

GENERAL FUND
Expense Budget by Program





Restricted Fund

This fund accounts for monies (such as gifts, grants, or contracts) that were given to the College on the condition they be used for a specific purpose.

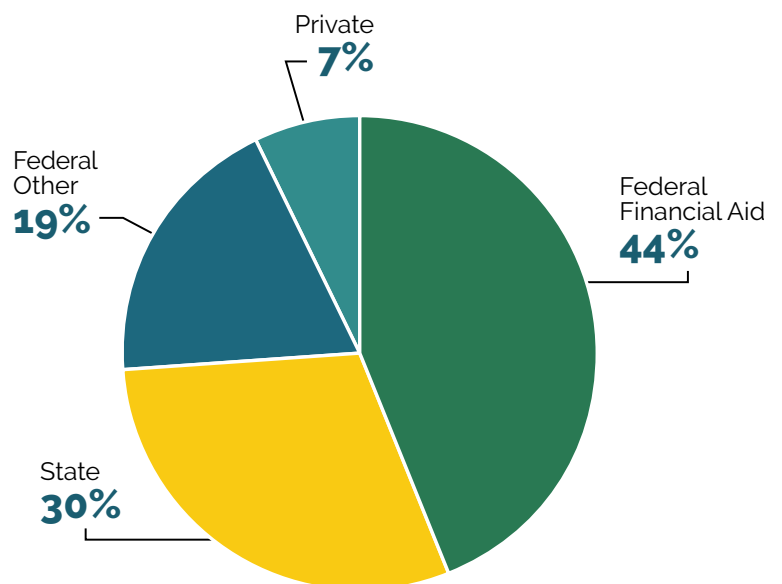
This year, the College brought \$19.7M of revenues to be spent in Yavapai County.

Federal Financial Aid is money to help students pay for College. This includes a host of programs such as:

- Federal Pell Grants
- Federal Work-Study
- Federal Direct Loans
- Federal Plus Loans
- Federal VA Benefits

Other grants support workforce development programs, provide Adult Basic Education for students wishing to earn their General Equivalency Diploma (GED), encourage first-generation college students to enroll, prevent substance abuse, and create lifelong learning opportunities for older adults.

RESTRICTED REVENUES BY SOURCE





Debt Fund

This fund tracks the issuance or repayment of principal, interest, and other related fees for long term debt.

Credit Ratings

Yavapai College's GO Bonds have been rated Aa2 from Moody's and AA- from S&P. These strong ratings indicate these investment experts believe that YC is a good credit risk, with a stable financial outlook and sound fiscal practices.

LONG TERM DEBT Actual and Projected Principal Payments



Capital (Plant) Fund

This fund records large improvements in building, infrastructure, and grounds, which are then depreciated over time. There are 3 primary components of the Capital Fund: Planned Maintenance, Equipment, and Capital Improvement Projects.

Planned Maintenance

Yavapai College reinvests \$4.5M in its buildings and infrastructure on an annual basis. We do this because it extends the useful life of our buildings and lowers our Total Costs of Ownership. YC has been working with Sightlines, a firm specializing in higher education facilities. Per their independent assessment of Net Asset Value, (NAV), our buildings are 87% as good as new, placing YC near in the top decile of colleges and universities.

Equipment

YC also reinvests annually in equipment to help employees remain productive and to provide students access to the tools they will encounter when they enter the workforce.

FY2025-26 Capital Improvement Projects

- 1. VVC Campus Signage** Increase site visibility and promote college classes and events by installing an electronic marquee adjacent to 89A highway and Black Hills Drive..
- 2. Center for Learning & Innovation, Prescott (19)** This initiative includes shared space for digital library resources, Technology and e-Learning Support, Tutoring, collaboration and studying, Fast Capture Studios for video and podcast production, and Immersive Learning Labs for Virtual and Augmented-reality supplemental learning activities. As we bring Phase 1 of this major renovation online in 1/26, we are ready for the approval of the Phase 2 funds needed to complete the renovation of the rest of the building. The Community Room (19-147) will be designed Fall of 2025 and updated in Spring of 2026. This additional work fits within the original budget estimated in the Facilities Master Plan.
- 3. Housing** Beginning with a Brailsford & Dunlavey report in 2019, YC has been looking for affordable housing solutions for students and attainable housing solutions for employees. This need was included in the FY22 Facilities Master Plan, and is now part of the College's Strategic Plan. After much market research, the college has identified several potential solutions: Projects include manufactured housing, tiny homes and an RV park at the VVC; tiny homes and RV's at the Chino Valley Center; renovating Building 34 to create an efficiency apartment on Prescott Campus; and Renovating a summer camp facility into your-round use.
- 4. Miscellaneous Projects** A) Due to space constraints, CTEC needs covered space for Welding program supplies. B) As we transitioned from a "heat-and-eat" frozen food model to a healthier, locally-sourced made-to-order model, we have made several operational changes to the Eatery workflow over the past year. This renovation will solidify the workflow changes along with the improved efficiencies. C) Finally, we plan to build a carport for the Emergency Medical Service program which will protect our vehicles from the elements, allowing them to last longer and to lower the Total Costs of Ownership.
- 5. Building 1 Lobby Remodel (P)** Over the past decade, the vast majority of students have moved from face-to-face registration to registering online, making the large lobby in Building 1 underutilized. We will renovate the lobby, creating new offices and a conference room needed to implement the newly awarded WIOA contract.



Construction progress of the Center for Learning & Innovation on the Prescott Campus, first floor.



Construction progress of the Center for Learning & Innovation on the Prescott Campus, second floor.



Site plan for housing on the Verde Valley Campus.



Site plan for housing at the Chino Valley Center.



Prescott Pines renovations for student and staff housing.



Auxiliary Fund

This fund tracks revenues and expenses for non-core services provided to students, employees, and the general public.

Residence Halls: YC has 220 beds on its Prescott Campus.

Employee and Adult housing: YC is developing housing opportunities for 10-40 employees and 90-120 adult (21+) students at Prescott Pines, Verde Valley Campus, and Chino Valley Center.

Food Services: YC operates food service at the Prescott and Verde Valley Campuses, partnering with the YC Ag program to provide farm-to-table offerings when available. YC contracts with a 3rd party operator to provide a grab and go self-service convenience store at CTEC.

Bookstore: YC contracts with Follett to provide books, educational supplies, and branded items.

Family Enrichment Center: YC operates a preschool as a hands-on learning lab for adult students in our Early Childhood Education program.

Southwest Wine Center: YC students cultivate 12 varieties of grapes on 13 acres, making YC one of the few academic Estate Wineries in the country. The annual harvests are converted into award-winning wines and marketed in the Tasting Room of the SWC.

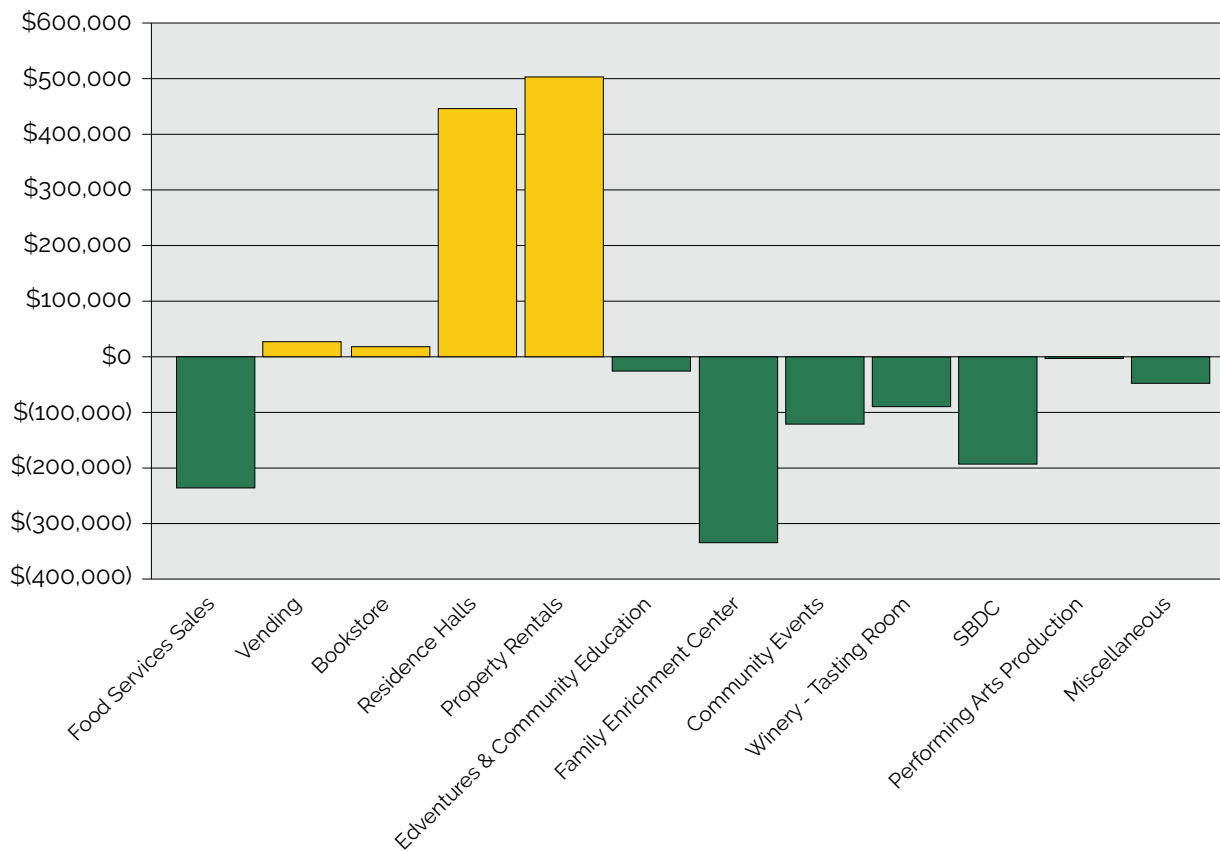
Community Events: YC offers a variety of community events throughout the county. This includes performances by the college Music and Theater departments, as well as sponsoring nationally touring artists. The majority of events are held at the 1100 seat Yavapai College Performing Arts Center but also have been held in a variety of venues, including the Mabery Pavilion at the YC Verde Valley Campus and the Sedona Performing Arts Center.

Each year, approximately 13,000 grade and middle school students attend the Curtain up! Education series which features 5-7 shows designed to engage students with the arts and enhance their educational experience.

AUXILIARY FUND	AMOUNT
Food Services Sales	\$(236,400)
Vending	\$30,000
Bookstore	\$20,000
Residence Halls	\$448,600
Property Rentals	\$503,700
Edventures & Community Education	\$(25,900)
Community Events	\$(121,200)
Family Enrichment Center	\$(333,930)
Winery- Tasting Room	\$(90,100)
SBDC	\$(193,100)
Performing Arts Productions	(3,100)
Miscellaneous	\$(48,100)



AUXILIARIES BUDGETED SURPLUS / (DEFICIT)
Without Overhead Allocation
 FY2025-26



Office of Finance and Administrative Services
1100 East Sheldon Street, Prescott, Arizona 86301
(928) 445.7300 | www.yc.edu

PREPARED BY:

Dr. Clint Ewell, Chief Operating Officer
Amy Fruchter, Graphic Designer
Dr. Michael Merica, Director of Institutional Effectiveness and Research
Duane Ransom, Budget Director
Wendy Swartz, Chief Business Officer/Controller
Ivonne Zuniga, Manager, Strategic Initiatives and Special Projects

The purpose of this Budget-in-Brief is to give the college community an overview of the FY2026 Budget.

MORE INFORMATION CAN BE FOUND ON THE COLLEGE'S WEBSITE:
www.yc.edu/budget

