

YAVAPAI COLLEGE FACILITIES MANAGEMENT NEWS

December 2022

The December issue of this newsletter contains the latest information related to Facilities Management programs and projects, along with general information concerning the development of the FY23 facilities master plan and capital improvements. If you have questions about any of the items listed, please email me at david.laurence@yc.edu. This newsletter is also posted on the Facilities website.



Verde Valley Campus Technician III Trades, Ken Hanson



Technician III Plumber, Mike Murphy, and Technician III Trades, Jaime Hernandez, installing a bottle filling station in building 32

Campus/Center Projects

CTEC Student Lounge Remodel

Recently, the CTEC dining area was expanded to increase seating capacity freeing up space used as the student lounge. Beginning in January, this space will be remodeled to include much-needed offices, ADA and tutoring space, and student reception space.



CTEC Room 182

Prescott and Verde Valley Electric Vehicle Charging Stations

Charging stations are installed on the Prescott campus near buildings 2, 19, and Campus Safety. Charging stations are also being installed near building I on the Verde Valley campus.



EV Charging Station utility installation near building I

FY22-23 CAPITAL IMPROVEMENT PLAN

Prescott Valley Center Deceleration Lane and Shared Drive

Construction of the Prescott Valley Center parking lot connector road is complete.



Prescott Valley Center & Glassford Hill Road connector

Verde Valley Skilled Trades Center Brewing and Distilling – postponed
Mingus Union HS Athletic Field Improvements – Facility use agreement in process
Building 3 Rider Diner Improvements – Phase 1 Space Refresh in process
Commercial Driving Track Chino – Construction begins January 2023
Digital Learning Commons Verde Valley – Programming through December 2022

Digital Learning Commons Steering Committee members:

Dr. Ryan
Diana Dowling
Lynn Durkee

Dr. Ewell
Stacey Hilton
Kay Rollins

Rodney Jenkins
Michael Burns
Ryan Gray

Tania Sheldahl
Heather Mulcaire
Robb Ferguson



Building M Library



Building M Learning Center

The final draft of the Yavapai College Facilities Master Plan is now available; please visit the master plan website: <https://masterplan.yc.edu/>

BUILDINGS AND GROUNDS PLANNED MAINTENANCE PROJECTS

As part of the budget, planned maintenance projects are scheduled each year to ensure that College facilities are maintained at a level to support optimum performance in building systems and infrastructure, life safety compliance, adequate maintenance and repair of roadways, parking lots, along with College grounds. These projects result from a recent Facilities Condition Assessment (FCA), which identifies when repairs, modifications, or replacement of components should occur.

FCA Projects:

Buildings 2, 3, and 4 LED Lighting Upgrade – in process through May 2023

Baseball Field Facilities Painting – Purchase order issued

Roadway replacement behind Buildings 3 and 4 – October 19 through December 9



Roadway behind buildings 3 and 4

Energy Corner – Tim Hunt

Our Facilities team is on the constant lookout for unusual water usage. We utilize our water meter readings and bills to ensure use is normal. By monitoring these items, we hope to catch any issues fast. When these levels rise, our team begins investigating for leaks or other reasons that may explain the increase. When leaks are found, we make the repairs as quickly as possible. We want to do our best to save this precious resource at our locations.

Environmental, Health and Safety – David Teague

Lockdown vs. Shelter-In-Place

If you've ever been confused about the difference between Lockdown and Shelter-in-Place, you're not alone. Often the media will use the terms interchangeably.

Yavapai College orders a Lockdown when there is, or may be, the presence of a hostile or armed intruder on or near campus. A Lockdown is used to prevent students, faculty, and staff from being exposed to the intruder.

Yavapai College orders a Shelter-in-Place when dangerous environmental conditions exist, such as extreme weather or a hazardous materials release. It's used to temporarily separate you from the hazardous outdoor atmosphere.

What to do in a Lockdown:

When a lockdown is ordered, some exterior doors will lock automatically. Doors that are not locked should be blocked or barricaded. Stay inside unless an imminently dangerous

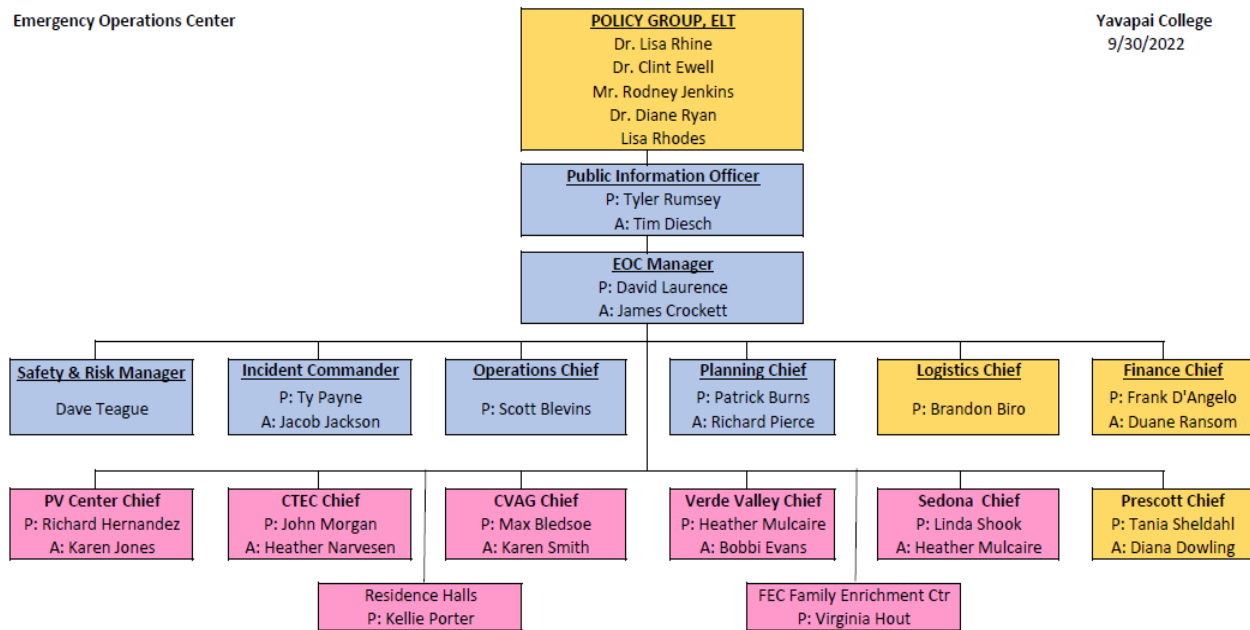
situation arises. If you're outside, seek shelter in the nearest building. Use a lockable room if possible. Close windows, shades/curtains/blinds, and avoid being seen from the outside if possible. Report any emergency or unusual condition to Campus Safety. Use discretion before you allow someone into a secure building. Require the person to leave backpacks and other bags outside as well as open their outer garments. Once in a secure location, do not leave until you receive the "All Clear" from Campus Safety, a Public Safety Officer, or alertYC.

What to do in a Shelter-in-Place:

When a shelter-in-place is ordered, seek shelter in the nearest building, preferably in an interior room with few windows. Allow access to others seeking shelter. Remember, a shelter-in-place order means there are dangerous environmental conditions, NOT a known threat of violent behavior. Close exterior doors, windows, and any other openings to the outside. Report emergency or unusual conditions to Campus Safety. Monitor alertYC for further instructions. Do not leave the building until given the "All Clear" from Campus Safety, a Public Safety Officer, or alertYC.

Emergency Operations Center

Yavapai College
9/30/2022



For more information regarding emergency preparedness, please visit the Risk Management page of the Facilities website at: <https://www.yc.edu/v6/facilities/risk.html>

Facilities New Team Members

No new team members this month.

Well, that is all for this edition of Yavapai College Facilities Management News. Please stay tuned for the next edition containing the latest information related to projects and programs around the College.