

# Yavapai College

Radiology Technology Program  
Information Session



**YC**  
**2**  
**WORK**



**Tracy Rogers, BSRS RT(R)(M)(ARRT)**  
Program Director

- Avery Liggett: Clinical Coordinator
- Dr. Bernard Sakowicz: Adjunct Faculty
- Tracy Van Kuilenberg: Adjunct Faculty
- Monica Dzapinka: Adjunct Faculty (coming Spring 2024)
- Brooke Rafter: Adjunct Faculty
- Kimberly Harvey: Women's Health Imaging Certificate Adjunct Faculty
- Jenny Walker: CT/MRI Program Adjunct Faculty
- **Autumn Butler: Instructional Support Specialist**

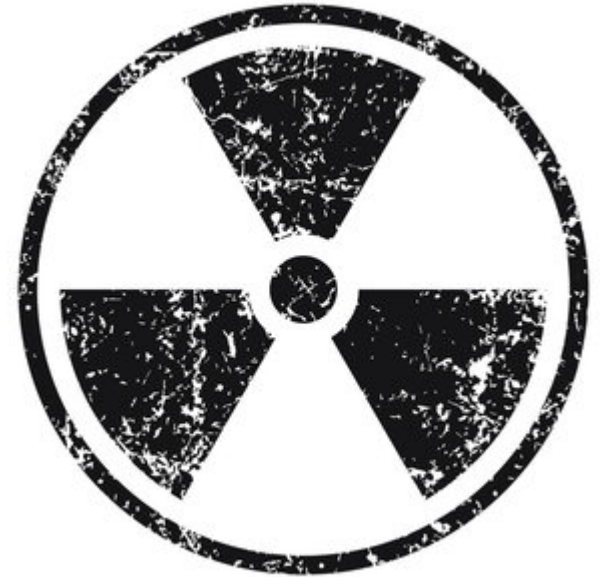
hello  
my name is...



**YC**  
2  
**WORK**

# OBJECTIVES

- What is Radiologic Technology?
  - Places of employment
  - Required Skills
- About our program
  - Student Qualifications
  - Application Process
- Career Mobility
- Open Q & A Session



**YC**  
**2**  
**WORK**

# WHAT IS RADIOLOGIC TECHNOLOGY?

The art & science of using radiation to provide images of the bones, organs, **soft tissue and vessels that comprise the human body**

- Radiologic technologists make up the third-largest group of health care professionals—surpassed in number only by physicians and nurses.
- A primary responsibility of many technologists is to create images of patients' bodies using medical equipment. This helps doctors diagnose and treat diseases and injuries. Depending on your specialty, you might use X-ray, MRI, CT, fluoroscopy, or sonography equipment.
- In some cases, you may prepare and inject radiopharmaceutical agents into patients before creating the images.
- You could also help physicians perform procedures—such as angioplasty or stent insertion—to treat heart and blood vessel diseases without surgery. Or you might administer therapeutic doses of radiation to treat diseases such as cancer.



**YC**  
**2**  
**WORK**

X-RAYS WERE DISCOVERED ON  
NOVEMBER 8, 1895



## WHO ARE WE?



Radiographers, also known as radiologic technologists, diagnostic radiographers and medical radiation technologists are healthcare professionals who specialize in the imaging of human anatomy for the diagnosis and treatment of pathology.



**YC**  
2  
**WORK**

## A DAY IN THE LIFE...

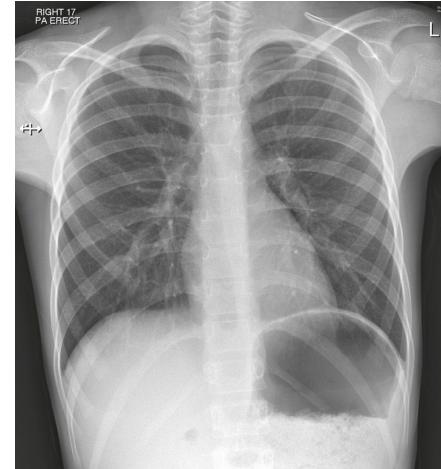
- You'll promote safety and provide the highest level of patient care as you complete your daily work.
- You'll probably work in:
  - Hospital
  - Physician's office (orthopedic, pain management, arthritis clinic, chiropractor)
  - Outpatient care center (urgent care, outpatient imaging, surgical centers)
- Depending on the career you choose, you might see individual patients once or rarely (for example, if you take X-rays or mammograms). Or you might see them regularly (for example, if you administer radiation to cancer patients). In the first case, you'll welcome people you haven't met, quickly putting their concerns at ease. In the second, you'll get to know your patients, addressing their fears and sharing their medical milestones during the course of their treatment.
- No matter your specialty, you'll be an important part of a medical team. Your work will help uncover health problems and could ultimately save lives. You'll be active throughout your working hours, and no two days will be the same.



**YC**  
**2**  
**WORK**

# TYPES OF MEDICAL IMAGING PROGRAMS

- Radiography-Radiologic Technology
  - CT-Computed Tomography
  - MRI-Magnetic Resonance Imaging
  - Interventional Radiography
  - Mammography
  - Bone Densitometry
- Nuclear Medicine Technology
- Ultrasound (Sonography)
- Radiation Therapy
- Radiologist Assistant



**YC**  
**2**  
**WORK**



# ABOUT OUR PROGRAM

Our classroom and lab are located at the Prescott Valley Campus.



**YC**  
2  
**WORK**

# ABOUT OUR PROGRAM

We are an accredited program recognized by the  
Joint Review Committee on Education in  
Radiologic Technology



JRCERT



*Excellence in Education*



**YC**  
**2**  
**WORK**

# COMPETENCY BASED PROGRAM

- **Two-year** program based on a combination of coursework (didactic) and clinical skills.
- Students are required to complete a specific number of competencies prior to graduation from the program as required by the ARRT.



Ensuring Gold Standard  
Patient Care Since 1922



ARIZONA DEPARTMENT  
OF HEALTH SERVICES



**YC**  
**2**  
**WORK**

# ABOUT OUR PROGRAM

## Prerequisites

Course	Title	Credit Hours
AHS130	Medical Terminology for Patient Care Staff	3
ENG101	College Composition I	3
ENG102	College Composition II	3
MAT152	College Algebra	3
BIO156 OR BIO181	Human Biology for Allied Health	4
BIO201	Human Anatomy and Physiology I	4
BIO202	Human Anatomy and Physiology II	4
<b>Total</b>		<b>24</b>

Ensure you are working closely with an advisor.

All prerequisites do not need to be completed before applying to the program but will improve your position within the scoring criteria for admission.

## Corequisites

Course	Title	Credit Hours
PHI204	Medical Ethics	3
PSY245	Human Growth and Development	3
<b>Total</b>		<b>6</b>

Ensure you are working closely with an advisor.

Corequisites may be taken prior to the start of the program. There are 3 semesters of opportunity to take them during the program and bring your student status to full-time.



# ABOUT OUR PROGRAM

## Fall Semester 1

Course	Title	Delivery Method	Credit Hours
RAD100	Introduction to Medical Imaging	Face to Face	2
RAD111	Radiographic Positioning I	Face to Face	3
RAD111L	Positioning Lab I	Face to Face	2.5
RAD125	Radiographic Technique I	Face to Face	2
RAD170	Radiology Patient Care & Pharmacology	Face to Face	2
RAD175	Radiation Biology (8 week course at the end of the semester)	Face to Face	2
<b>Total</b>			<b>13.5</b>



**YC**  
**2**  
**WORK**

# ABOUT OUR PROGRAM

## Spring Semester 1

Course	Title	Delivery Method	Credit Hours
RAD135	Radiation Physics & Equipment	Face to Face	3
RAD141	Radiographic Positioning II	Face to Face	3
RAD141L	Positioning Lab II	Face to Face	2.5
RAD155	Radiographic Technique II	Face to Face	2
RAD160 A	Clinical Education	Off-Site: Assigned Clinical Location	3
<b>Total</b>			<b>13.5</b>



**YC**  
**2**  
**WORK**

# ABOUT OUR PROGRAM

## Summer Semester

Course	Title	Delivery Method	Credit Hours
RAD160B	Clinical Education	Off-Site: Assigned Clinical Location	3
RAD185	Image Analysis	Online	2
<b>Total</b>			<b>5</b>
PHI204 or PSY245	*Opportunity to take corequisite course*		3
<b>Total</b>			<b>8</b>



**YC**  
**2**  
**WORK**

# ABOUT OUR PROGRAM

## Fall Semester 2

Course	Title	Delivery Method	Credit Hours
RAD200A	Clinical Education	Off-Site: Assigned Clinical Location	7
RAD215	Advanced Imaging Systems	Online	2
<b>Total</b>			<b>9</b>
PHI204 or PSY245	*Opportunity to take corequisite course*		3
<b>Total</b>			<b>12</b>



**YC**  
**2**  
**WORK**



# ABOUT OUR PROGRAM

## Spring Semester 2

Course	Title	Delivery Method	Credit Hours
RAD200B	Clinical Education	Off-Site: Assigned Clinical Location	3
RAD250	Radiographic Pathology (8 week course at the start of the semester)	Face to Face	2
RAD255	Radiology Registry Prep & Professional Development	Face to Face	3
<b>Total</b>			<b>8</b>
PHI204 or PSY245	*Opportunity to take corequisite course*		3
<b>Total</b>			<b>11</b>
ICE Course	*Opportunity to take ICE100 CT, ICE200 MRI, ICE250 Mammography* GPA 3.5 or higher at Program Director discretion	Online	3-4

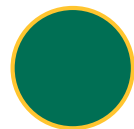
**Clinical Attendance:** Students must complete a minimum of 1,800 hours of clinical education as directed by Arizona state statute and the Arizona Department of Health Services. This requirement is considered necessary to complete the competencies needed for eligibility to challenge the American Registry of Radiologic Technologists examination. **Clinical site assignments vary and you may be subject to a commute in excess of 1.5 hours.**

**Outside Employment:** The program is demanding and requires the full-time commitment of the students. The program encourages students to consider that outside employment may interfere with the quality of academic performance. It is recommended that students discuss their situation with the program director before accepting outside employment. **It is also recommended that students work fewer than twenty (20) hours per week**

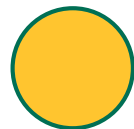


**YC**  
**2**  
**WORK**

# CLINICAL EDUCATION

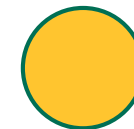
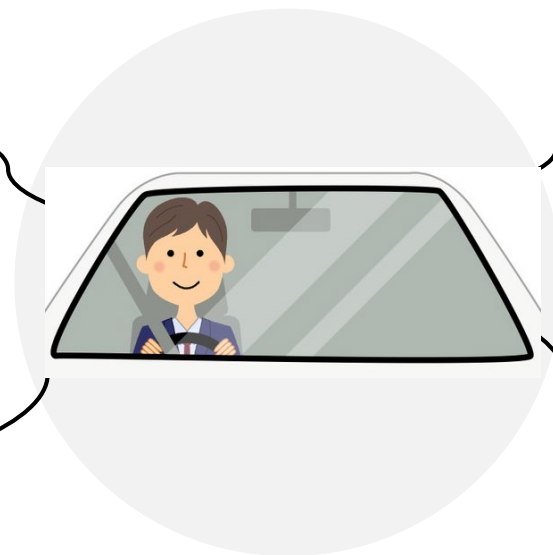


**Commuting**  
In excess of 1.5 hours



**Schedule**

- Mon-Fri
- 8-10 hour shifts
- Between 6am-11pm
- Total 1800 hrs



**You're Responsible for:**

- Gas
- Lodging
- Car Maintenance



**Professionalism**

- Appearance
- Behavior
- Conversation
- Attendance



# CLINICAL EDUCATION AFFILIATES

## Clinical Education Sites:

- Northern VA Medical Center
- SimonMed-Prescott Valley & Prescott
- Dignity Health YRMC
  - West Campus, East Campus, PMI, PVM
- Northern Arizona Healthcare
  - VV Med Ctr., NAH Med. Imaging Ctr., Sedona Med. Ctr.
- Flagstaff Medical Center
  - NAH Medical Group-Orthopedic
- Flagstaff Bone & Joint
- Northern Arizona Radiology



Northern Arizona  
Healthcare



SimonMed  
Imaging  
*See Tomorrow Today*



**VA** | U.S. Department  
of Veterans Affairs



**YC**  
**2**  
**WORK**

# !!WARNING!!

Within every profession involving patient care you will be exposed to sick & injured members of the community.

- Bodily fluids
  - Blood, urine, vomit, sputum, feces
- Disease
- COVID-19
- Death
- Mental Illness
- Infection
- Abuse/Domestic Violence



**YC**  
**2**  
**WORK**

# STUDENT QUALIFICATIONS

National background check

Ethics review by ARRT if needed

- Felony
- Misdemeanor

Drug test-zero tolerance to include marijuana

Current Health Insurance (must maintain throughout program)

Immunizations (or proof of titers)

- Done at the expense of the student and requires upkeep during the program
- COVID-19 & Flu exemptions may be submitted to the college



**YC**  
**2**  
**WORK**

# STUDENT QUALIFICATIONS-PHYSICAL

Ability to lift and move patients safely

Reach above your head to move heavy equipment

Ability to stand a significant amount of time while moving patients and equipment.

- Must wear protective lead apparel during patient care  
(at times)

Ability to see and hear clearly

- Please see technical standards in the application packet for more details



**YC**  
**2**  
**WORK**

# STUDENT QUALIFICATIONS-PERFORMANCE

- Effective oral & written communication skills
- Work effectively in a team setting
- Ability to work in a multi-cultural environment
- Use of critical-thinking skills
- Emotional stability & maturity
- Ability to work compassionately with patients and their families
- Organize & perform sequentially the individual steps necessary for an x-ray exam



**YC**  
**2**  
**WORK**

# GRADING SCALE

Upon successful completion and graduation from the Radiologic Technology Program, students are eligible to challenge the ARRT Exam.

**Minimum passing score is 75%**

- If you do not pass all your coursework with a **final grade of 75%** or higher you will not be able to move on to the next semester.
- You must reach the minimum required competencies every semester to be considered passing.



You must have your ARRT in order to receive your state license.

THE AMERICAN REGISTRY  
OF RADIOLOGIC  
TECHNOLOGISTS®



**YC**  
**2**  
**WORK**



# RADIOLOGY PROGRAM SPECIFIC FEES

TOTAL INCLUDES TUITION FEES FOR PROGRAM CORE COURSES

## Textbooks/Uniform Scrubs & Shoes

Trajecsys (logging of clinical time and exams performed)

MyClinicalExchange (for the clinical sites to confirm your compliance)

CastleBranch (for the school to track all your documents, required to apply)

Passport Photos 2x2 image from CVS/Walgreens (for your hospital ID badges)

Vaccinations (upkeep required)

- COVID-19 vaccine or booster (not always required-declination form available for certain sites)
- Flu Vaccine (not always required-declination form available for certain sites)

Annual TB skin test

CPR Certification (offered at YC as well as outside locations)

ACERT Conference (educational conference held in Vegas every Feb. for Radiology Programs nationwide)

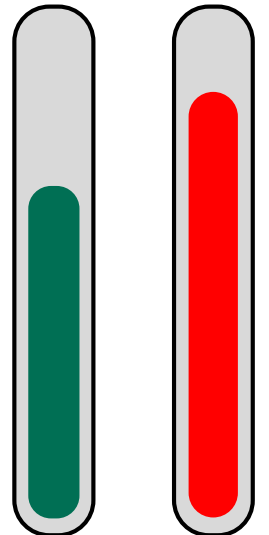
- Fundraising to lower cost of trip to the student.

Replacement Markers (we provide you with 1<sup>st</sup> set of R & L Marker)

● Yavapai College Program Estimate Cost

● Nationwide XR Program Average Cost

\$10,000      \$16,000-\$20,000



**YC**  
**2**  
**WORK**

## ARRT Exam Fee & State License Fee

# RADIOLOGY SCHOLARSHIPS

Community Healthcare Scholars (2 Rad students awarded once per year)

Dr. George S. Naifeh, Jr. Endowed Scholarship

Robert Altmanshofer Scholarship

Lambda Nu National Honor Society Student Scholarship

Radiologic Technologist Student Emergency Fund

Alumni Scholarship for Continuing Education in honor of Marybeth Western, RT(R)



**YC**  
**2**  
**WORK**

YAVAPAI COLLEGE  
**PROMISE**  
— WORKFORCE —

# YC'S ROENTGEN RAY STUDENT ORGANIZATION



YC's Roentgen Ray Student Organization is a pre-professional organization committed to supporting and mentoring future radiologic technologists by providing opportunities in: Leadership, Professional Development, and Mentorship to current and future Rad Tech Students. Membership is open to pre-radiology and radiology students.

Contact: Tracy Rogers, (928) 717-7108

<https://www.yc.edu/v6/campus-activities/clubs.html>



**YC**  
**2**  
**WORK**

# ARIZONA ZETA CHAPTER OF LAMBDA NU

## A NATIONAL HONOR SOCIETY FOR RADIOLOGIC SCIENCES

It's official! We are the Arizona Zeta Chapter of Lambda Nu a National Honor Society for Radiologic & Imaging Sciences! Look for your first invitation to join. You need to have a 3.2 or higher GPA. You'll be linked to make your \$30.00 life-time membership payment.

### Z

Arizona Zeta's name is derived from the upper-case Greek character  $Z$  which represents, in physics, the measurement of magnitude of the electrostatic charge (repulsion or attraction) between particles. This is symbolic of the sense of belonging our cohort class structure brings to the students, community and patients we serve. We build within the imaging community an attraction between technologist mentors and students as well as foster mentorship between current students and interested parties.

Arizona Zeta colors are royal blue to symbolize empathy and the long-standing traditional color of our student scrubs throughout the history of our program as well as gold, the ancient color of honor.



**YC**  
**2**  
**WORK**



# ADMISSION CRITERIA

## Radiologic Technology Program Selection Criteria

Admission to the Radiologic Technology program is based on a point system that utilizes the criteria listed below. Students are required to provide proof of residency (for tuition purposes, residency is defined by the Arizona State Legislature and is outlined in the Yavapai College catalog), grade-point average, and admission to Yavapai College. Proof of coursework and registration history will be established by the records on file in the Registrar's office.

### Selective Admissions Point System (based on a total of 624 possible points)

\_\_\_\_ **Residency (the physical address where you live at the time of application)**

- Residency within Yavapai County or Coconino County 100 points
- Residency within the state of Arizona 50 points
- Residency outside state or country 0 points

\_\_\_\_ **Cumulative Grade Point Average (pre-program entry courses) up to 100 possible points**

2.0 or greater= \_\_\_\_\_ x 25 points

\_\_\_\_ **Total Required Pre-Program Credits Completed Up to 24 possible points**

Earned pre-program entry credits equal 1 point each and must be completed with a letter grade of "C" or better based on transcripts evaluated by the Yavapai College Registrar's office.

\_\_\_\_ **Current and Former Yavapai College Students (completion of pre-program entry courses at YC)**

- 12 or more YC credits completed 100 points
- 9 to 11 YC credits completed 80 points
- 6 to 8 YC credits completed 60 points
- 3 to 5 YC credits completed 40 points
- 0 to 2 YC credits completed 0 points

\_\_\_\_ **HESI A2 Entrance Exam**

(good for 1 year can be taken twice in a 12mo. period. Must not be outside the 12 mo. window at time of application)

Cumulative Score of 75% required for application submission.

- 95-100% 300 points
- 90-94.99% 250 points
- 84-89.99% 200 points
- 75-83.99% 100 points

An application must be complete in order for the applicant to be considered for final selection and placement. Proof of attendance at a Radiology Information Session within the last 12 months of application submission is required.

The 13 highest ranked applicants will be offered seats, based on space availability. The next 5 applicants on the ranking will be offered alternate status.

When several applicants have the same ranking score, the following criteria will determine tie breakers:

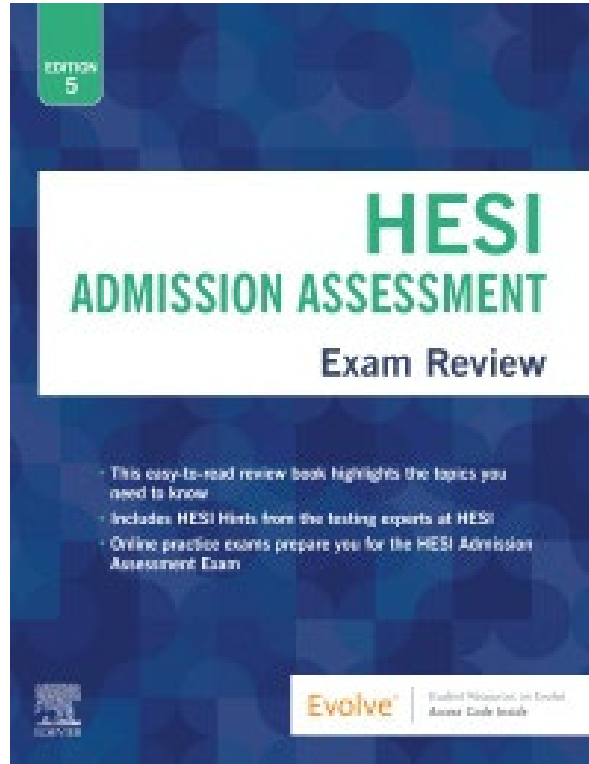
1. Overall GPA.
2. Overall Critical Thinking Score on the HESI Exam.
3. Number of times the Entrance Exam was taken to achieve a passing score.
4. Number of times pre-requisite courses were taken.



**YC**  
**2**  
**WORK**

# HESI A2 ENTRANCE EXAM

Review book available online averaging: \$20-\$40  
ISBN: 9780323582261



Call & schedule at one of our test centers:  
<https://www.yc.edu/v6/testing-center/>

Instructions on how to get started are on our website.

3 hour exam that you need to schedule and complete with a 75% or better prior to applying to the program.

Cost: \$61.00

English:

- Reading comprehension
- Vocabulary
- Grammar

Math: Basic Math Skills

Science:

- Biology
- Anatomy & Physiology

Critical Thinking Skills

- Problem Solving
- Biases & Ethical Dilemmas
- Argument Analysis
- Analysis of Data
- Prioritization of Care



**YC**  
**2**  
**WORK**

# APPLICATION PROCESS

[www.yc.edu/radiology](http://www.yc.edu/radiology)

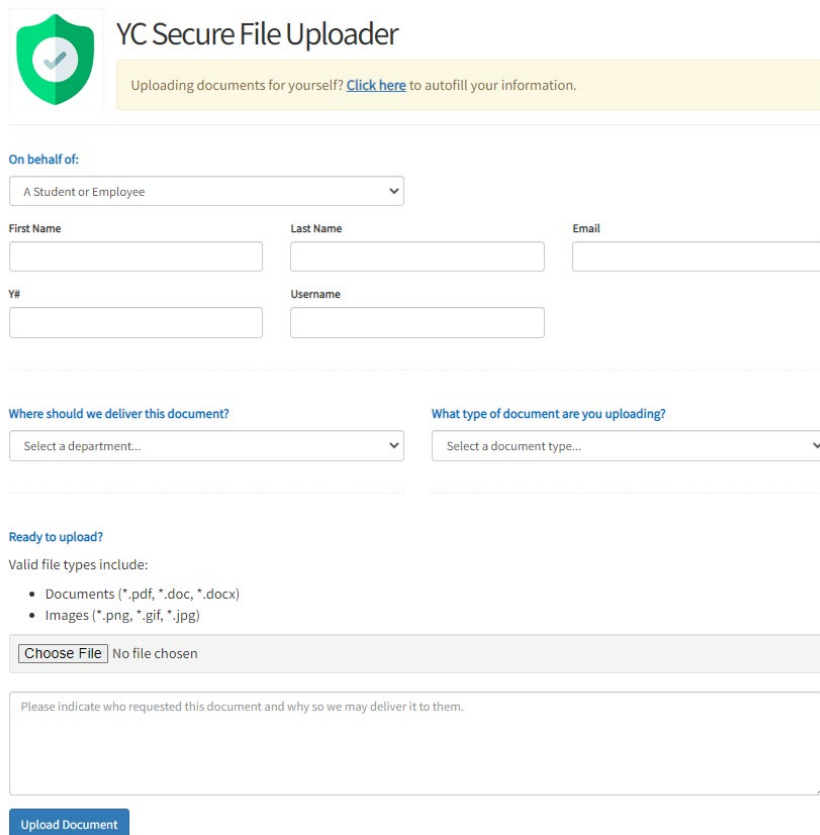
## Application Checklist for Fall 2024 Radiologic Technology Program

- Submit the completed application packet items below **in this order** to:  
<https://www.yc.edu/secureupload> (under **radiology** not admissions) by midnight on **Friday, January 26, 2024**.  
  
**NOTE:** Please ensure that your application is legible, formatted correctly and in 1 PDF file. Don't forget your entrance exam must be complete prior to applying otherwise your application is incomplete and will not be considered. You have until Dec. 31, 2023 to complete the entrance exam for your application.
- Completed Radiologic Technology Application for Admission
  - Official transcripts must be sent directly to the Yavapai College Registrar from any previous institution(s) for official evaluation. Mail transcripts to: Yavapai College, Office of the Registrar, 1100 E. Sheldon Street, Prescott, AZ 86301*
  - Unofficial transcripts (can be photocopies) from all colleges or universities attended (to be included with this application)*
  - Pre-Entry Check Sheet Form for the Radiologic Technology program (signed by an academic advisor)
  - Copy of Yavapai College student ID card (with photo) or driver's license
  - Signed Healthcare Provider Signature Form
  - Signed copy of the Ethics Requirements Form  
(Students must go to <https://www.arrt.org/pages/resources/ethics-information> and review the information pertaining to ethics requirements.)



**YC**  
**2**  
**WORK**

# APPLICATION PROCESS



YC Secure File Uploader

Uploading documents for yourself? [Click here](#) to autofill your information.

On behalf of:  
A Student or Employee

First Name Last Name Email

Y# Username

Where should we deliver this document? What type of document are you uploading?

Select a department... Select a document type...

Ready to upload?

Valid file types include:

- Documents (\*.pdf, \*.doc, \*.docx)
- Images (\*.png, \*.gif, \*.jpg)

Choose File No file chosen

Please indicate who requested this document and why so we may deliver it to them.

Upload Document

- Submit the application as one file
- Select Radiology department not Admissions
- Do not include the application packet unless its part of the application
- You will receive correspondence from the college on your conditional acceptance

**THE BELOW SHOULD BE READY TO SUBMIT TO CASTLE BRANCH UPON CONDITIONAL ACCEPTANCE**

1. Copy of current negative Mantoux Method TB skin test or chest x-ray diagnostic report stating that no tuberculosis is present.
2. Copy of valid BLS for Healthcare Providers card from the American Heart Association (front and back, with your signature).
3. Copies of all immunizations or titers in support of your immunization documentation for Castle Branch, see next page for reference form.
4. Copy of Health Insurance Card.

<https://www.yc.edu/v6/schools/hewe/radiology.html>



**YC**  
**2**  
**WORK**



# CAREER MOBILITY

Nationwide statistics from US Bureau of Labor Statistics

Quick Facts: Radiologic and MRI Technologists	
2021 Median Pay ?	\$61,980 per year \$29.80 per hour
Typical Entry-Level Education ?	Associate's degree
Work Experience in a Related Occupation ?	<a href="#">See How to Become One</a>
On-the-job Training ?	None
Number of Jobs, 2021 ?	264,000
Job Outlook, 2021-31 ?	6% (As fast as average)
Employment Change, 2021-31 ?	17,000

<https://www.bls.gov/ooh/healthcare/radiologic-technologists.htm>



**YC**  
**2**  
**WORK**

# CAREER MOBILITY

Travel Technologist Jobs have become much more popular and offer amazing salaries with additional benefits.



# CAREER MOBILITY

100% of our job-seeking graduates are hired within 12 mo's of graduation. The majority of our students stay local to this area. There are PLENTY of employment opportunities locally.

100



**YC**  
**2**  
**WORK**

# ADDITIONAL OPPORTUNITIES WITH YC AFTER GRADUATION

**We offer CT, MRI and Women's Health Imaging Certificates for any technologist in good standing with the ARRT wanting a post-primary certification.**

This will include our graduates after they pass their ARRT exam and receive a state CRT license.

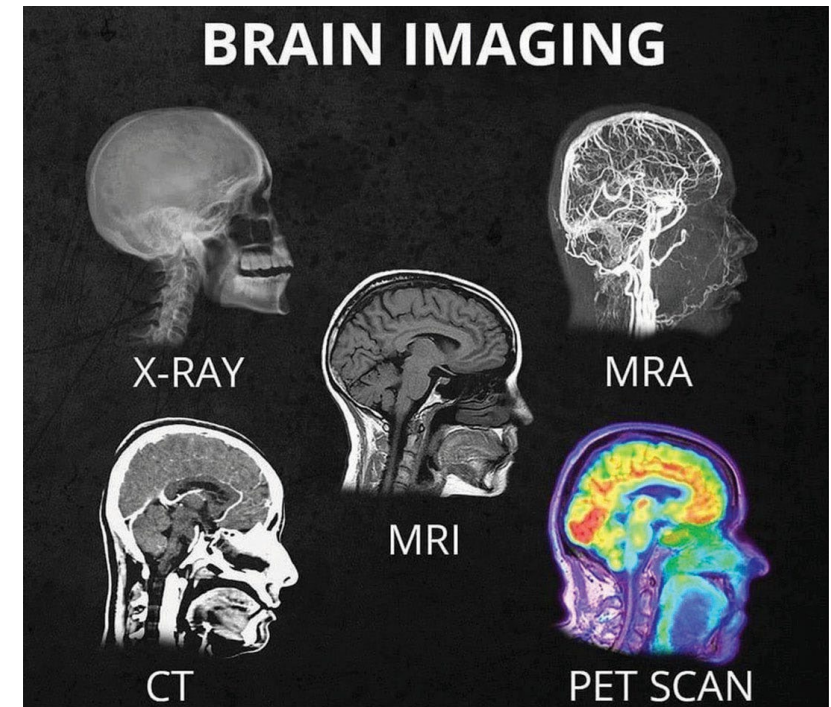
Fall, Spring and Summer Semesters Available for CT and Mammography (Women's Health Imaging)

Fall and Spring Semesters Available for MRI

**\*\*This is what the Alumni Scholarship is designed to help you accomplish\*\***



**YC  
2  
WORK**



# THANK YOU!

Click on the class verification link on the YC.edu/radiology page & answer all of the questions.

- This will generate a certificate of completion that will be sent to your email. You must include the certificate of completion with your Radiologic Technology program application.

Make sure to include your Name, Email, & Phone Number

If you have additional questions please email:

[autumn.butler@yc.edu](mailto:autumn.butler@yc.edu)



**YC**  
**2**  
**WORK**

