

# YAVAPAI COLLEGE

*Be More*



## 2024-2025 STUDENT HANDBOOK

3800 N. Glassford Hill Rd.  
Prescott Valley, AZ 86314

928.776.2333



# WELCOME

## TO THE RADIOLOGIC TECHNOLOGY PROGRAM

PAGE 02

This handbook is designed as a reference source for Radiologic Technology students.

The Yavapai College Radiologic Technology program is committed to quality healthcare, quality education, and the standards of the profession.

Educational standards are established in compliance with the Joint Review Committee on Education in Radiologic Technology (JRCERT) and the American Registry of Radiologic Technologists (ARRT). The course of study adheres to the Radiography curriculum developed by the American Society of Radiologic Technologists (ASRT).

### PROGRAM MISSION

The mission of the Yavapai College Radiologic Technology Program is to provide quality education that will develop competent, caring, and ethical entry-level radiographers who value lifelong learning and adapt to continuous changes in the healthcare system.

### PROGRAM GOALS

- Students will be able to communicate effectively as a member of a healthcare team.
- Students will be able to demonstrate the ability to apply critical thinking and problem-solving skills.
- Students will be able to exhibit clinical competency by adhering to the ethical and professional standards of radiologic sciences.

### PROGRAM PHILOSOPHY

The Radiologic Technology Program staff shares the mission and values of Yavapai College. We are committed to contributing to the profession of radiography through teaching and service. We recognize that radiologic technology students are unique, come from diverse backgrounds, and have individual learning needs. We believe that radiography is an art and a science, and that a sound radiologic technology curriculum integrates knowledge from the sciences and the humanities. The radiologic technology curriculum is based on competency-based learning.



# PROGRAM DESCRIPTION

PAGE 03

The Associate of Applied Science (AAS) degree in Radiologic Technology is a 2-year program (including summer) that prepares students for entry-level positions as radiographers. The program starts once per year in the fall semester. Students must complete 24 credit hours of pre-entry courses, 49 credits of major core courses and 6 credits of co-requisite courses. It should be noted that clinical rotations associated with the 2nd, 3rd, 4th, and 5th semesters begin earlier than the Yavapai College semester start dates in order to satisfy the 1800-hour clinical experience requirement for program completion. Time off for vacation during the semester will not be approved. Students should schedule vacations during the time between semesters.

The program is designed around a model of classroom and laboratory instruction integrated with hands-on experience in a clinical setting that provides a thorough educational foundation and professional preparation to enter the workforce as an independent practitioner upon graduation.

The Radiologic Technology Program is a demanding experience and involves a full-time commitment of up to 40-hours per week plus homework. Students must maintain a minimum 2.5 GPA in all radiologic technology courses and a minimum 2.0 GPA in all general education courses to remain in the program. Students must be adequately prepared to meet the challenge and establish priorities prior to the start of classes.

Graduates of the program are eligible to:

1. Receive an AAS degree in Radiologic Technology.
2. Challenge the American Registry of Radiologic Technologists examination (ARRT).
3. Apply for an Arizona Department of Health Services license to practice radiography-AZDHS CRT (Certified Radiologic Technologist).

## ACCREDITATION

The Yavapai College Radiologic Technology Program is accredited by the Higher Learning Commission of the North Central Association of Colleges and Universities. The program is also accredited by the Joint Review Committee on Education in Radiologic Technology (JRCERT).

Contact JRCERT at 312-704-5300 or [www.jrcert.org](http://www.jrcert.org)

**TRACY ROGERS**

Program Director

928.717.7108

Tracy.Rogers@yc.edu

**AVERY LIGGETT**

Clinical Coordinator

928.717.7124

Avery.Liggett@yc.edu

**COMING FA24**

Radiology Faculty

**AUTUMN BUTLER**

Instructional Support  
Specialist

928-776-2333

Autumn.Butler@yc.edu

**DEB BAUERT**

Radiology Tutor

928-717-7143

deborah.bauert@yc.edu

3800 N. Glassford Hill Rd.  
Prescott Valley, AZ 86314

Fax: 928-717-7892

[www.yc.edu/radiology](http://www.yc.edu/radiology)





## Table of Contents

<b>Academic Calendar .....</b>	<b>9</b>
<b>Institution Policy.....</b>	<b>10</b>
Policy Changes .....	10
Yavapai College Equal Opportunity Statement.....	10
Student Resources .....	10
FERPA .....	11
Confidentiality of Student Records.....	11
Student Right to Know .....	11
Civil Dialogue Statement.....	12
Title IX-Sexual Misconduct .....	12
Academic Integrity.....	12
Attendance .....	12
Course Withdrawal .....	13
Student Code of Conduct .....	13
Zero-Tolerance Guidelines .....	13
Arizona Medical Marijuana Act (Prop. 203).....	14
Cell Phones and Texting .....	15
Student Course Evaluations .....	15
<b>Program Curriculum.....</b>	<b>15</b>
Program Learning Outcomes.....	16
Incomplete Grades.....	19
Academic Advising .....	19
Program Advising Process .....	19
Imaging Continuing Education (ICE) Course Opportunity.....	20
<b>Classroom/Laboratory Policy .....</b>	<b>20</b>
Attendance .....	20
Laboratory .....	21



Dress Code .....	21
Cell Phones and Texting .....	22
Academic Integrity .....	22
Generative Artificial Intelligence (AI) .....	23
Zero-Tolerance Guidelines .....	23
Student Code of Conduct .....	23
Student Resources .....	24
Student Course Evaluations .....	24
<b>Clinical Education.....</b>	<b>24</b>
HIPAA .....	25
Community Agency Partners.....	25
Clinical Placement.....	26
Hour Limit .....	26
Attendance .....	26
No-Call/No-Show .....	27
Clinical Make-Up Time .....	27
Injury or Illness in the Clinical Setting.....	27
Technical Standards .....	28
Physical Requirements .....	30
Infectious Disease .....	30
Immunizations .....	31
Required Immunizations .....	31
Professional Liability Insurance .....	32
Student Health/Accident Insurance .....	33
National Criminal Background Checks .....	33
Drug Testing.....	33
Basic Life Support (BLS) for Healthcare Providers.....	33
Clinical-Education Compliance .....	34



Clinical Education Dress Code .....	34
Personal Hygiene .....	35
Name Badges .....	36
Lead Markers .....	36
Clinical Education Safety .....	36
Administration of Contrast Media.....	36
Dosimetry Monitors.....	37
Holding Patients.....	37
Shielding .....	38
Radiation Safety Procedures .....	38
MRI Safety Screens .....	39
Student Supervision.....	39
Direct Supervision .....	39
Repeat Images .....	39
Indirect Supervision .....	39
Pregnancy Policy.....	40
Clinical Education Activities Tracking .....	44
Clinical-Education Conduct .....	41
Cell Phones and Texting .....	41
Zero-Tolerance Guidelines .....	42
Personal Conversation Standards.....	43
Clinical Competency Requirements.....	44
General Performance Considerations:.....	45
Radiography-Specific Requirements.....	45
Simulated Performance .....	45
Patient Diversity .....	46
General Patient Care .....	46
Special Imaging Observations .....	52





Grading .....	52
Student Course Evaluations .....	43
<b>Dismissal and Grievances.....</b>	<b>54</b>
Classroom and Clinical Education .....	54
Process for Dismissal.....	55
Appeal Process.....	55
Policy .....	55
Procedure .....	55
Steps in the Appeal Process .....	56
Non-Academic Complaints .....	57
Readmission to the Program .....	57
Allegations of Non-Compliance with Joint Review Committee on Education in Radiologic Technology (JRCERT) Standards .....	58
<b>American Registry of Radiologic Technologists (ARRT) Examination &amp; Arizona Department of Health Services (AZDHS) Licensure .....</b>	<b>59</b>
Student ARRT Exam Scheduling and Fee .....	59
AZDHS Initial Licensure Application and Fee .....	59
<b>Program Forms .....</b>	<b>60</b>
<b>APPENDIX: .....</b>	<b>71</b>
<b>PROCEDURE ON SCREENING FOR USE OF ALCOHOL AND DRUGS.....</b>	<b>71</b>

Each student enrolled in the Yavapai College Radiologic Technology Program is responsible for reading, understanding, and complying with the guidelines presented in the Student Handbook.

***A student's signature on the Student Agreement Form represents a contractual agreement between the Yavapai College Radiologic Technology Program and the student.*** Failure to abide by the guidelines set forth in the Student Handbook may result in disciplinary action, including mandatory withdrawal from the program.



## Academic Calendar [2024-2025]

### [Academic Calendar](#)

#### **Fall Semester 2024: August 17 – December 14**

New Faculty Training	August 7-9
Faculty Activities Week	August 12-16
Convocation	August 12
Fall Semester Begins (16-Week and first 8-Week Session)	August 17
Labor Day Holiday (no classes, offices closed)	September 2
First 8-Week Semester Ends	October 11
Fall Intermission for all students (no classes, offices open)	October 12 - 15
Second 8-Week Semester Begins	October 16
Veterans Day (no classes, offices closed)	November 11
Thanksgiving Holiday (no classes, offices close)	November 27-30
Fall Semester Ends	December 14
Final Grades Due to Registrar by noon	December 18

#### **WINTER BREAK (Offices closed): December 21 – January 5**

#### **Spring Semester 2025: January 18 – May 16**

Faculty Activities Week	January 13-17
Martin Luther King Day Holiday (offices closed)	January 20
All College Spring Welcome	January 15
Spring Semester Begins (16-Week and first 8-Week Session)	January 18
First 8-Week Semester Ends	March 14
SPRING BREAK (Offices Closed)	March 15-21
Second 8-Week Semester Begins	March 22
Spring Semester Ends	May 16
Verde Valley Graduation	May 17
Prescott Graduation	May 18
Final Grades Due to Registrar by noon	May 21



### Summer Semester 2025: June 2 – July 26

#### Monday-Thursday

Memorial Day Holiday (offices closed)	May 26
Summer Semester Begins	June 2
Juneteenth Holiday (no classes, offices closed)	June 16
Independence Day Holiday (no classes, offices closed)	July 4
Summer Session Ends	July 26
Final Grades Due to Registrar	July 30

## Institution Policy

### Policy Changes

The Yavapai College Radiologic Technology Program reserves the right to add, revise, or repeal its policies and requirements at any time.

### Yavapai College Equal Opportunity Statement

Yavapai College is an affirmative action/equal opportunity institution. A lack of English language skills will not be a barrier to admission and participation in the programs of the college. [https://www.yc.edu/v6/marketing/equal\\_opportunity.html](https://www.yc.edu/v6/marketing/equal_opportunity.html)

### Student Resources

- Yavapai College recognizes that access to basic needs such as food and safe shelter are vital to a successful academic experience. Students who have difficulty affording groceries or accessing sufficient food to eat, lack a safe and stable place to live, have difficulty affording required items for classes, or are without health insurance may contact the [Strong Foundations](#) program for basic needs support services.
- [Disability Resources](#) ensures qualified students with disabilities equal access and reasonable accommodations in all Yavapai College academic programs and activities. YC supports disability and accessibility awareness and promotes a welcoming environment for all. The Americans with Disabilities Act of 1990 and 504 of the Rehabilitation Act of 1973 prohibits discrimination on the basis of disability





and requires Yavapai College to make reasonable accommodations for those otherwise qualified individuals with a disability who request accommodations.

- Yavapai College is committed to providing educational support services to students with documented disabilities. Accommodations for a student must be arranged by the student through Disability Resources by phone at 928.776.2085 or email [disabilityresources@yc.edu](mailto:disabilityresources@yc.edu).
- [Learning Center Resources](#) offers a multitude of tutoring services to students. Included in this is a free Radiology Tutor.

## **FERPA**

The Family Education Rights and Privacy act of 1974 (FERPA) affords eligible students certain rights with respect to their education records. An eligible student under FERPA is a student who is 18 years of age or older or who attends a postsecondary institution.

<https://www.yc.edu/v6/registrar/ferpa.html>

## **Confidentiality of Student Records**

The program maintains a file for each applicant and student that contains documentation related to admission and progression in the program. The Yavapai College Radiologic Technology program follows the College guidelines for confidentiality of student records as required by the Family Educational Rights and Privacy Act of 1974 (FERPA).

## **Student Right to Know**

Student Right to Know (SRTK) refers to a Federally-mandated public disclosure of a college's Completion Rate and Transfer Rate. The intent of SRTK is to provide to the consumer a statistic of comparable effectiveness that they can use in the determination of college choice. All colleges nationwide are effectively required to participate in the disclosure of rates. Yavapai College has included additional success measure from the Voluntary Framework of Accountability (VFA).

The Higher Education Opportunity Act requires colleges participation in Federal Student Aid Program to make certain information easily available to consumers. Yavapai College had complied the information below in compliance with that federal law.

<https://www.yc.edu/v6/institutional-research/students-right.html>



## **Civil Dialogue Statement**

Regardless of venue or delivery method, faculty must ensure and maintain an environment appropriate for higher education. To promote a positive educational experience, appropriate and civil communication is an expectation of all students. All communication must remain respectful. Language or behavior that is threatening, intimidating, harassing, defamatory, libelous, or obscene is unacceptable. Hate speech is prohibited. Failure to abide by these standards may result in disciplinary measures. Please see [Public Access and Expression on College Property \(10.10\)](#) for further detail.

## **Title IX-Sexual Misconduct**

Yavapai College does not deny or limit any student or employee the ability to participate in or benefit from any program offered by the institution on the basis of sex or gender. Sexual harassment, which includes acts of sexual violence such as rape, sexual assault, sexual battery, sexual coercion, unwanted touching, dating/relationship violence, and stalking, are forms of gender-based discrimination prohibited by Title IX.

The college encourages students and employees to report incidents of sexual misconduct as soon as possible to the Title IX Coordinator or to a Deputy Title IX Coordinator. Contact information for Coordinators can be found at [Sexual Misconduct Resources](#).

## **Academic Integrity**

Honesty in academic work is a central element of the learning environment. It is expected that students will submit their own work. The presentation of work not created by the student as one's own or the act of seeking unfair academic advantage through cheating, plagiarism, the prohibited use of generative AI, or other dishonest means are violations of the college's Student Code of Conduct.

Definitions of plagiarism, cheating, and violation of copyright and penalties for violation are available in the [Yavapai College Student Code of Conduct](#).

## **Attendance**

Students are expected to attend and participate in all class meetings, laboratories, and field trips. A student who expects to be absent due to a school-sponsored activity must make prior arrangements with their instructor. A strong correlation exists between class attendance and success in the program. Should an absence be necessary in a required class, lab, or clinical assignment, the student will be held responsible for all material



presented in that class. Habitual absence from any of these meetings may necessitate a Program Director-initiated withdrawal from the course.

### **Course Withdrawal**

A student-initiated withdrawal deadline is established by the college. If a student has not withdrawn from a class by the deadline, the student will receive the letter grade earned in the course at the end of the semester; earned grades will be posted on the student's permanent record.

### **Student Code of Conduct**

Respect for the rights of others and for the college and its property are fundamental expectations for every student.

The [Student Code of Conduct](#) outlines behavioral expectations and explains the process for responding to allegations of student misconduct.

Students are expected to respond and write in a respectful, professional, and appropriate manner in all forms of communication and when activities are assigned to create scenarios, discuss opinions, present on a selected subject, or post to the web board. Inappropriate language or objectionable material will not be tolerated and could result in disciplinary measures and/or a failing grade for the class.

### **Zero-Tolerance Guidelines**

Yavapai College has a Zero Tolerance for Threats and Disruptive Behavior policy (YC Policy 2.26).

Any Radiologic Technology program student engaging in the following behaviors is subject to immediate dismissal from classes and disciplinary action as described in the *Yavapai College Student Code of Conduct* (<https://www.yc.edu/v5content/student-services/codeofconduct.htm>) and the *Yavapai College Radiologic Technology Student Handbook*.

1. Intentionally or recklessly causing physical harm to any person on the campus or at a clinical site, or intentionally or recklessly causing reasonable apprehension of such harm.





2. Unauthorized use or possession of any weapon or explosive device on the campus or at a clinical site.
3. Unauthorized use, distribution, or possession of any controlled substances or illegal drug for any purpose (i.e., distribution, personal use) on the campus or at a clinical site.
4. Any misconduct covered by the *Yavapai College Student Code of Conduct*.

### **Arizona Medical Marijuana Act (Prop. 203)**

In 2010, Arizona voters approved the Arizona Medical Marijuana Act (Proposition 203), a state law permitting individuals to possess and use limited quantities of marijuana for medical purposes. Because of its obligations under federal law, however, Yavapai College will continue to prohibit marijuana possession and use on campus for any purpose. Under the Drug Free Workplace Act of 1988, and the Drug Free Schools and Communities Act of 1989, "...no institution of higher education shall be eligible to receive funds or any other form of financial assistance under any federal program, including participation in any federally funded or guaranteed student loan program, unless it has adopted and has implemented a program to prevent the use of illicit drugs and abuse of alcohol by students and employees." Another federal law, the Controlled Substances Act, prohibits the possession, use, production, and distribution of marijuana for any and all uses, including medicinal use. This law is not affected by the passage of the Arizona Medical Marijuana Act.

**Yavapai College could lose its eligibility for federal funds if it fails to prohibit marijuana, it is exempt from the requirements of the Arizona Medical Marijuana Act.** Therefore, Yavapai College will continue to enforce its current policies prohibiting the unlawful manufacture, distribution, dispensation, possession, or use of a controlled substance on its property or as part of any of its activities. Students who violate Yavapai College policy prohibiting the use or possession of illegal drugs on campus will continue to be subject to disciplinary action, up to and including expulsion from school and termination of employment. Please refer to the Yavapai College Student Code of Conduct: <https://www.yc.edu/v5content/student-services/codeofconduct.htm>.

Intoxicated/impaired behaviors that are disruptive to the learning process violate the Yavapai College Student Code of Conduct (<https://www.yc.edu/v5content/student->



[services/codeofconduct.htm](#)). Also, a student in a clinical assignment who is under the influence of alcohol or drugs that impair judgment poses a threat to the safety of patients. For these reasons, evidence of use of these substances, documented by positive drug and/or alcohol screening tests, will result in immediate withdrawal of the student from the program. In the event of an appeal, Yavapai College will make every effort to expedite the appeal process and assure the student of fundamental fairness.

### **Cell Phones and Texting**

Yavapai College is committed to providing a quality learning environment. All cell phones must be placed in a non-audible mode while in classrooms, clinical assignments, computer labs, the library, the Learning Center, and testing areas. Cell phones must be used outside these facilities.

### **Student Course Evaluations**

Students will complete evaluations each semester regarding the effectiveness of faculty, courses, clinical preceptors, and clinical-education sites. The results are summarized by the Program Director and, if statistically valid, are shared with various communities of interest in the college and clinical education settings. Results can be discussed at advisory board or faculty meetings. Finally, feedback is gathered and assessed to assist with program improvements.

## **Program Curriculum and Grading Policy**

**Radiologic Technology Pre-Entry Requirements *Total Credits: 24***  
**Progression Plan**



Fall Term 1	10 credit hours	Hours	Notes
• AHS 130 Medical Terminology for Patient Care Staff		3	Prerequisite: Reading Proficiency
• ENG 101 College Composition I <i>First Year Composition</i>		3	Prerequisites: Satisfactory score on the English skills assessment; or a grade of "C" or better in ENG 095. Reading Proficiency.
• BIO 156 Human Biology for Allied Health <b>OR</b> BIO 181 General Biology I <i>Physical and Biological Science</i>		4	Prerequisite: Reading Proficiency
<b>Term hours subtotal:</b>		<b>10</b>	

Spring Term 1	10 credit hours	Hours	Notes
• ENG 102 College Composition II <i>First Year Composition</i>		3	Prerequisites: ENG 101 or ENG 101A or ENG 103. Reading Proficiency.
• MAT 152 College Algebra ( <i>preferred</i> ) <b>OR</b> any mathematics course for which MAT 152 is a prerequisite <i>Mathematics</i>		3	Prerequisite: MAT 097 or a satisfactory score on the mathematics skills assessment.
• BIO 201 Human Anatomy and Physiology I		4	Prerequisite: BIO 156 or BIO 181
<b>Term hours subtotal:</b>		<b>10</b>	

Summer Term 1	4 credit hours	Hours	Notes
• BIO 202 Human Anatomy and Physiology II		4	Prerequisite: BIO 201 <i>*Course can be taken in a 16-week session in the fall semester.</i>
<b>Term hours subtotal:</b>		<b>4</b>	

The following Co-Requisite General Education courses are recommended during pre-entry if seeking full-time enrollment in the Associate of Arts, Radiologic Technology Intent:

- PHI 204 - Medical Ethics – 3 credits - Prerequisites: ENG 101 or ENG 103. Reading Proficiency.  
*Arts and Humanities*
- PSY 245 - Human Growth and Development – 3 credits – **No prerequisite**  
*Social and Behavioral Science*

*This recommended sequence is not a binding agreement of any kind between Yavapai College and the student, but merely represents a potential curriculum that may be altered as appropriate to meet the student's academic objectives. Course availability is subject to change and all courses are not available every semester. Students should inquire each semester with their Advisor before registering to determine current requirements and possible changes to the suggested curriculum.*

## Program Learning Outcomes

Upon successful completion of the Radiologic Technology AAS Degree program, the learner will:

1. Attain the clinical competency expected of entry-level radiologic technologists.
2. Communicate effectively within the radiology science industry.
3. Demonstrate the ability to apply critical thinking and problem-solving skills.
4. Exhibit professional behavior in alignment with the ethical and professional standards of radiologic science.



## Radiologic Technology-AAS Total Credits: 55

### Progression Plan

Fall Term 1	13.5 credit hours	Hours	Notes
• RAD 100 Introduction to Medical Imaging		2	<b>Prerequisites:</b> Admission to the Radiologic Technology program. Reading Proficiency. <b>Corequisite:</b> RAD 111, RAD 111L, RAD 125, RAD 170, and RAD 175.
• RAD 111 Radiographic Positioning I		3	<b>Prerequisites:</b> Admission to the Radiologic Technology program. Reading Proficiency. <b>Corequisite:</b> RAD 100, RAD 111L, RAD 125, RAD 170, and RAD 175.
• RAD 111L Radiographic Positioning Lab I		2.5	<b>Prerequisites:</b> Admission to the Radiologic Technology program. Reading Proficiency. <b>Corequisite:</b> RAD 100, RAD 111, RAD 125, RAD 170, and RAD 175.
• RAD 125 Radiographic Technique I		2	<b>Prerequisites:</b> Admission to the Radiologic Technology program. Reading Proficiency. <b>Corequisite:</b> RAD 100, RAD 111, RAD 111L, RAD 170, and RAD 175.
• RAD 170 Radiology Patient Care and Pharmacology		2	<b>Prerequisites:</b> Admission to the Radiologic Technology program. Reading Proficiency. <b>Corequisite:</b> RAD 100, RAD 111, RAD 125, RAD 141L, and RAD 175.
<b>2<sup>nd</sup> 8 weeks</b>			
• RAD 175 Radiation Biology and Protection		2	<b>Prerequisites:</b> Admission to the Radiologic Technology program. Reading Proficiency. <b>Corequisite:</b> RAD 100, RAD 111, RAD 111L, RAD 125, and RAD 170.

**Term hours subtotal: 13.5**

Spring Term 1	13.5 credit hours	Hours	Notes
• RAD 135 Radiation Physics and Equipment		3	<b>Prerequisites:</b> RAD 100, RAD 111, RAD 111L, RAD 125, RAD 170, and RAD 175. <b>Corequisite:</b> RAD 141, RAD 141L, RAD 155, and RAD 160A.
• RAD 141 Radiographic Positioning II		3	<b>Prerequisites:</b> RAD 100, RAD 111, RAD 111L, RAD 125, RAD 170, and RAD 175. <b>Corequisite:</b> RAD 135, RAD 141L, RAD 155, and RAD 160A.
• RAD 141L Radiographic Positioning Lab II		2.5	<b>Prerequisites:</b> RAD 100, RAD 111, RAD 111L, RAD 125, RAD 170, and RAD 175. <b>Corequisite:</b> RAD 135, RAD 141, RAD 155, and RAD 160A.
• RAD 155 Radiographic Technique II		2	<b>Prerequisites:</b> RAD 100, RAD 111, RAD 111L, RAD 125, RAD 170, and RAD 175. <b>Corequisite:</b> RAD 135, RAD 141, RAD 141L, and RAD 160A.
• RAD 160A Radiology Clinical Education		3	<b>Prerequisites:</b> RAD 100, RAD 111, RAD 111L, RAD 125, RAD 170, and RAD 175. <b>Corequisite:</b> RAD 135, RAD 141, RAD 141L, and RAD 155.

**Term hours subtotal: 13.5**



Summer Term 1	8 credit hours	Hours	Notes
• RAD 160B Radiology Clinical Education		3	Prerequisites: RAD 135, RAD 141, RAD 141L, RAD 155, and RAD 160A. Corequisite: RAD 185
• RAD 185 Radiographic Image Analysis		2	Prerequisites: RAD 135, RAD 141, RAD 141L, RAD 155, and RAD 160A. Corequisite: RAD 160B
• PHI 204 Medical Ethics <i>General Education Co-Requisite Requirement</i>		3	Prerequisites: ENG 101 or ENG 103. Reading Proficiency.
<b>Term hours subtotal:</b>		<b>8</b>	

Fall Term 2	12 credit hours	Hours	Notes
• RAD 200A Radiology Clinical Education		7	Prerequisites: RAD 160B and RAD 185. Corequisite: RAD 215
• PSY 245 Human Growth and Development <i>General Education Co-Requisite Requirement</i>		3	
<b>1<sup>st</sup> 8 weeks</b>			
• RAD 215 Advanced Imaging Systems		2	Prerequisites: RAD 160B and RAD 185. Corequisite: RAD 200A
<b>Term hours subtotal:</b>		<b>12</b>	

Spring Term 2	8 credit hours	Hours	Notes
• RAD 200B Radiology Clinical Education		3	Prerequisites: RAD 200A and RAD 215. Corequisite: RAD 250 and RAD 255.
• RAD 255 Radiology Registry Prep and Professional Development		3	Prerequisites: RAD 200A, RAD 215 Corequisite: RAD 200B, RAD 250
<b>1<sup>st</sup> 8 weeks</b>			
• RAD 250 Radiographic Pathology		2	Prerequisites: RAD 200A and RAD 215 Corequisite: RAD 200B and RAD 255
<b>Term hours subtotal:</b>		<b>8</b>	

*This recommended sequence is not a binding agreement of any kind between Yavapai College and the student, but merely represents a potential curriculum that may be altered as appropriate to meet the student's academic objectives. Course availability is subject to change and all courses are not available every semester. Students should inquire each semester with their Advisor before registering to determine current requirements and possible changes to the suggested curriculum.*

## Grading

A minimum of **75.0%** is required for each assignment group within each course to move forward in the program progression. All courses within the program are graded "A" through "F" without an "S" or "U" option. Grades are not rounded or curved.

<u>Percentage Score</u>	<u>Letter Grade</u>
90–100%	A
80–89.99%	B
75.0–79.99%	C
60–74.99%	D
0–59%	F





## **Incomplete Grades**

A grade of "I" may be requested by a student and will be posted to the student's permanent record only at the end of a semester in which the student has done the following:

1. Has completed a significant majority of the work required for the course while maintaining a "C" average for work submitted and is capable of completing the remainder of the required work for the course.
2. Experienced extenuating circumstances that prevent completion of the course requirements.

It is the exclusive responsibility of each student receiving an Incomplete to be in communication with the instructor and complete the course(s) by the deadline established by the instructor, the maximum of which can be 30 days. The instructor will then initiate a Change of Grade form. If the instructor is no longer available, the student should contact the Radiology Program Director. If the work required is not completed by the deadline established by the instructor, the grade specified by the instructor will be posted to the permanent record.

## **Academic Advising**

Meeting with an academic advisor is required prior to registering for Radiologic Technology classes each semester. Contact the following offices to speak to an advisor:

Prescott Campus:	928-776-2106
Verde Valley Campus:	928-634-6510

## **Program Advising Process**

A student whose weighted grade total falls below 80% will meet with the instructor to discuss possible factors contributing to low performance and will also meet with the Radiologic Technology Program Director to develop a Step Improvement Plan.

The Program Director and the instructor will review the student's overall performance for the semester and discuss areas that need improvement. If during the second evaluation period in the semester, the student's weighted total is less than 80%, the student will be immediately placed on step two of the Step Improvement Plan. If the student fails to



complete requirements of the Step Improvement Plan to show noted improvement, they will be placed on step three and will be dismissed from the program.

### **Step Improvement Plan**

Distribution of the Step Improvement Plan indicates it has been received by the student and are required to complete the required remediation plan given by faculty/instructor by the due date. Failure to complete this will result in a course grade of F. Unsuccessful remediation of the concern(s) identified in the Step Improvement Plan will result in a course grade of "F".

### **Imaging Continuing Education (ICE) Course Opportunity**

During spring term #2, a student with a 3.5 program GPA or higher, and Program Director permission, may enroll in one of the following ICE courses:

- ICE100: Computed Tomography Certificate [3]
- ICE200: Magnetic Resonance Certificate [3]
- ICE250: Mammography Initial Training [4]

These courses are online, self-directed, and satisfy the ARRT didactic requirements for a post-primary certification within those disciplines. Students are not able to perform their clinical education experience requirements until after they have received their AZDHS CRT License and fill out the proper applications with the state to begin a preceptorship. The student can return in a later semester to complete the clinical education course if on-the-job training is unavailable.

## **Classroom/Laboratory Policy**

### **Attendance**

Students are expected to attend and participate in all class meetings, laboratories, and field trips. A student who expects to be absent due to a school-sponsored activity must make prior arrangements with their instructor. A strong correlation exists between class attendance and success in the program. Should an absence be necessary in a required class, lab, or clinical assignment the student will be held responsible for all material presented in that class. Habitual absence from any of these meetings may necessitate a Program Director-initiated withdrawal from the course.



## **No-Call/No-Show**

A no-call/no-show occurs when a student misses a scheduled lecture without giving proper notice, i.e.; The student must notify ALL primary course instructors not less than 1-hour before the scheduled start time.

Full Letter-Grade Reduction:

First no-call/no-show within 1 year

Withdrawal from Program:

Second no-call/no-show within 1 year

## **Laboratory**

Hands-on participation and full engagement are required in the laboratory. PlatinumPlanner will be used to track skill sign-offs for the day to acquire your lab participation grade. No food or drink is permitted beyond the locker area. Lockers must be used to store student belongings. Proper and regular maintenance/cleaning of the room and equipment must occur at the end of each day. Tube warm-ups should be performed at the beginning of every lab class.

## **Dress Code**

**Lecture courses and classroom activities:** Students will be expected to wear uniform shirts with the YC Program logo, pants or jeans without holes or rips, and closed-toe shoes with secure heels that are non-porous. Belts should be worn when appropriate and pants/jeans should fit comfortably. Leggings are not acceptable attire. Orders will be placed at the student's expense.

**Lab courses:** students will be expected to wear scrub uniforms. Instructions for purchasing uniforms will be given at the start of the first semester to ensure compliance is met no later than the 3<sup>rd</sup> week of the semester.

- Pewter scrubs, any brand with minimal adornments [joggers acceptable].
- Black, closed-toe, secured heeled, non-porous shoes.
- Black, white, gray undershirts or warm-up jackets are acceptable.
  - No sweatshirts or hoodies.



### **Grooming standards:**

- Facial hair must be clean, well-groomed and trimmed short.
- Natural hair-colors.
  - Well-groomed, cleaned, controlled, and off the collar.
- Shorts, mini-skirts, frayed pants, sweat pants, flip flops, low-cut or belly-baring tops, etc., are not acceptable to wear to and from clinical sites.
- No facial piercings or gauges.
- No artificial or gel nails permitted.
  - Only clear or nude nail polish
  - Well-groomed and short

### **Cell Phones and Texting**

Yavapai College is committed to providing a quality learning environment. All cell phones must be placed in a non-audible mode while in classrooms, clinical assignments, computer labs, the library, the Learning Center, and testing areas. Cell phones must be used outside these facilities.

If cell phones are deemed disruptive during classroom, laboratory or clinical assignments, this policy may be reconsidered and changed to a “no cell phone” policy. Students should check messages during designated breaks. Cell phones should be turned off and put away during exams.

Acceptable times to use your mobile device are during laboratory skills sign-offs and tracking or during designated breaks. **Inappropriate use of your mobile device during lab will result in a zero for participation that day.**

### **Academic Integrity**

Honesty in academic work is a central element of the learning environment. It is expected that students will submit their own work. The presentation of work not created by the student as one's own or the act of seeking unfair academic advantage through cheating, plagiarism, the prohibited use of generative AI, or other dishonest means are violations of the College's Student Code of Conduct.

Definitions of plagiarism, cheating, and violation of copyright and penalties for violation are available in the [Yavapai College Student Code of Conduct](#).



## **Generative Artificial Intelligence (AI)**

The World Economic Forum defines generative AI as “a category of artificial intelligence (AI) algorithms that generate new outputs based on the data they have been trained on. Unlike traditional AI systems that are designed to recognize patterns and make predictions, generative AI creates new content in the form of images, text, audio, and more.”

Some examples of generative AI tools include but are not limited to: ChatGPT, Google Bard, Microsoft Copilot, Stable Diffusion, GrammarlyGo, and Adobe Firefly.

## **No Generative Artificial Intelligence (AI) Allowed**

In this program, all work submitted must be your own. The use of generative AI tools will be considered [academic misconduct](#) and will be treated as such. If you are unsure if the tool or website you are using is a generative AI tool, please contact the instructor for further clarification before using the tool or website.

## **Zero-Tolerance Guidelines**

Yavapai College has a Zero Tolerance for Threats and Disruptive Behavior policy (YC Policy 2.26).

Any Radiologic Technology Program student engaging in the following behaviors is subject to immediate dismissal from classes and disciplinary action as described in the *Yavapai College Student Code of Conduct* (<https://www.yc.edu/v5content/student-services/codeofconduct.htm>) and the *Yavapai College Radiologic Technology Student Handbook*.

## **Student Code of Conduct**

Respect for the rights of others and for the college and its property are fundamental expectations for every student. The [Student Code of Conduct](#) outlines behavioral expectations and explains the process for responding to allegations of student misconduct.

Students are expected to respond and write in a respectful, professional, and appropriate manner in all forms of communication and when activities are assigned to create scenarios, discuss opinions, present on a selected subject, or post to the web board. Inappropriate language or objectionable material will not be tolerated and could result in disciplinary measures and/or a failing grade for the class.





## Student Resources

- Yavapai College recognizes that access to basic needs such as food and safe shelter are vital to a successful academic experience. Students who have difficulty affording groceries or accessing sufficient food to eat, lack a safe and stable place to live, have difficulty affording required items for classes, or are without health insurance may contact the [Strong Foundations](#) program for basic needs support services.
- [Disability Resources](#) ensures qualified students with disabilities equal access and reasonable accommodations in all Yavapai College academic programs and activities. YC supports disability and accessibility awareness and promotes a welcoming environment for all. The Americans with Disabilities Act of 1990 and 504 of the Rehabilitation Act of 1973 prohibits discrimination on the basis of disability and requires Yavapai College to make reasonable accommodations for those otherwise qualified individuals with a disability who request accommodations.
- Yavapai College is committed to providing educational support services to students with documented disabilities. Accommodations for a student must be arranged by the student through Disability Resources by phone at 928.776.2085 or email [disabilityresources@yc.edu](mailto:disabilityresources@yc.edu).
- [Learning Center Resources](#) offers a multitude of tutoring services to students. **Included in this is a free Radiology Tutor.**

## Student Course Evaluations

Students will complete evaluations each semester regarding the effectiveness of faculty, courses, clinical preceptors, and clinical-education sites. The results are summarized by the Program Director and, if statistically valid, are shared with various communities of interest in the college and clinical education settings. Results can be discussed at advisory board or faculty meetings. Finally, feedback is gathered and assessed to assist with program improvements.

## Clinical Education

In the clinical setting, students will have an opportunity to apply theory to practice under supervision. Students will be assigned to various rotations throughout the program's



clinical affiliates. There is fairness in the assignment of clinical rotations for all students in a cohort in order to facilitate access to all the various types of required ARRT competencies. Yavapai College guarantees clinical assignments to all students, but there is no guarantee of a specific clinical education setting. Personal convenience cannot be guaranteed. First and foremost, clinical rotations are created and based on the needs of the program and student development.

Students must complete a **minimum of 1800 hours** of clinical education. (ARS Title 32, Chapter 28, 32-2804) The requirement of clinical education is considered necessary to complete the competencies needed for eligibility to sit for the American Registry of Radiologic Technologists Examination.

## **HIPAA**

The Health Insurance Portability and Accountability Act (HIPAA) regulates confidentiality and privacy issues. Protection of patient information is both a legal and professional responsibility. All information related to a patient must be treated as confidential. This information may be in written, verbal, or other forms. Students are expected to maintain confidentiality in a professional manner and they must sign a confidentiality agreement, which is retained in their file. Under no circumstances will patient identification information be revealed or discussed in class activities, image critiques, or presentations. Failure to comply with this policy will result in disciplinary action, which may include mandatory withdrawal from the Radiologic Technology Program.

## **Community Agency Partners**

Dignity YRMC

- West Campus
- PMI
- East Campus
- PVMI

Northern Arizona Veteran Association

SimonMed

- Prescott
- Prescott Valley

Northern Arizona Health Care

- Flagstaff Medical Center [Level 1 Trauma]
- NAH Orthopedics Flagstaff
- Verde Valley Medical Center



- Northern Arizona Healthcare Medical Imaging Center
- Sedona Medical Center

Flagstaff Bone & Joint

Northern Arizona Radiology

North Country HealthCare Williams Clinic

HonorHealth (in-progress)

- Deer Valley [Level 1 Trauma]
- Sonoran Crossing

### **Clinical Placement**

Clinical assignments are located throughout the state and are scheduled for students each semester by the Clinical Coordinator. Clinical assignments are scheduled during the week between 5 a.m. and 11 p.m. Schedules will not be based on the student's inability to travel to clinical assignments.

**Clinical education may require travel in excess of 1.5 hours one way and is the responsibility of the student.** Students are expected to provide their own reliable transportation throughout the length of the program.

### **Hour Limit**

Students may not exceed a combined clinical and didactic schedule of 40-hours per week unless such scheduling is voluntary on the student's part. Students are not permitted to exceed 10-hours in one shift. A 30-min lunch is required when a student is scheduled 6-hours or more in one shift.

### **Attendance**

Students who are ill or have an emergency and are unable to report for a clinical assignment must personally notify both the clinical preceptor and program faculty (i.e., Clinical Coordinator) 1-hour prior to the start of the scheduled shift. Absences must be made up before the end of the semester in which they occur. The student will be allowed 16-hours of sick time each semester of the program, which will not be counted against attendance; however, the student may be asked to provide documentation prior to returning to clinical assignments (i.e. a physician's note). Any absences beyond the allowed 16-hours will result in a 5-percentage-point drop in the final grade for each occurrence in that semester.



In the professional environment, punctuality is mandatory—no exceptions. Chronic absenteeism and tardiness will result in disciplinary action and a lowering of the clinical course final grade. A Step Improvement Plan will be issued and noted improvement required. Students are allowed two (2) unplanned late occurrences per semester before it affects their final grade. More than two will result in a 5-percentage-point drop in the final grade for each occurrence in that semester. Pre-planned and approved absences or late starts will not count against a student's grade.

If students have excessive absenteeism and tardiness from clinical assignments, it will result in dismissal from the program.

### **No-Call/No-Show**

A no-call/no-show occurs when a student misses a scheduled lecture without giving proper notice, i.e.; The student must notify ALL primary course instructors not less than 1-hour before the scheduled start time.

Full Letter-Grade Reduction:  
Withdrawal from Program:

First no-call/no-show within 1 year  
Second no-call/no-show within 1 year

### **Clinical Make-Up Time**

Absences must be made up before the end of the semester in which they occur. Make-up time is scheduled at the discretion of the Clinical Coordinator with permission of the Clinical Preceptor so as not to exceed 40 hours per week. A clinical make-up time form is mandatory before time is approved.

### **Injury or Illness in the Clinical Setting**

Program and clinical personnel must be notified immediately in the event of a student's illness or injury requiring medical attention. The college and clinical-education settings are not responsible for the student's medical expenses. This includes any activity that results in adverse consequences to patients or the student. Additionally, the student must comply with the incident-protocol procedures of the clinical-education setting.

Students who have been exposed to a communicable disease in the clinical setting must report the exposure immediately to their clinical instructor and YC Clinical Coordinator.



If a student has a prescribed restriction on physical activity, a physician's written directive must be provided to the clinical preceptor and the YC Clinical Coordinator.

Students who sustain an injury or have an accident while in the clinical setting are to notify their clinical preceptor and YC Clinical Coordinator immediately. Students must complete the accident/injury report for the facility where the incident occurred and the Yavapai College Accident/Incident form. The completed form is to be submitted to the Radiology Department Instructional Support Specialist within 24-hours. (form in Appendix)

### **Technical Standards**

This statement of the Technical Standards of the Radiologic Technology Program at Yavapai College identifies the functional abilities deemed by the radiography faculty to be essential to the practice of radiography. The Technical Standards are reflected in the Radiologic Technology Program's performance-based outcomes, which are the basis for teaching and evaluating all radiography students.

Students with disabilities who think they may require accommodation in meeting the Technical Standards of the Radiologic Technology Program should contact the Disability Resources Office to discuss the process of identifying reasonable accommodations. <https://www.yc.edu/v6/disability-resources/>

Students should seek accommodation advising as soon as possible so that a plan for accommodation can be in place at the beginning of the program. Applicants seeking admission to the Radiologic Technology Program who may have questions about the Technical Standards and appropriate reasonable accommodations are invited to discuss their questions with the Disability Resources office. Reasonable accommodation will be directed toward providing an equal educational opportunity for students with disabilities while adhering to the standards of radiography practice for all students.

The practice of radiography requires the following functional abilities with or without reasonable accommodations:

- **Visual acuity** sufficient to assess patients and their environments and to implement the radiography-services plans that are developed from such assessments. Examples of relevant activities:
  - Detect changes in skin color or condition.
  - Collect data from recording equipment and measurement devices used in patient services.



- Detect a fire in a patient area and initiate emergency action.
- Draw up the correct quantity of medication into a syringe.
- **Hearing ability** sufficient to assess patients and their environments and to implement the radiography-services plans that are developed from such assessments. Examples of relevant activities:
  - Detect audible alarms within the frequency and volume ranges of the sounds generated by mechanical systems that monitor bodily functions.
  - Communicate clearly in telephone conversations.
  - Communicate effectively with patients and with other members of the health-services team.
- **Olfactory ability** sufficient to assess patients and to implement the radiography-services plans that are developed from such assessments. Examples of relevant activities:
  - Detect foul odors of bodily fluids or spoiled foods.
  - Detect smoke from burning materials.
- **Tactile ability** sufficient to assess patients and to implement the radiography-services plans that are developed from such assessments. Examples of relevant activities:
  - Detect changes in skin temperature.
  - Detect unsafe temperature levels in heat-producing devices used in patient services.
  - Detect anatomical abnormalities, such as infiltrated intravenous fluid.
- **Strength and mobility** sufficient to perform patient services activities and emergency procedures. Examples of relevant activities:
  - Safely transfer patients in and out of bed or wheelchair.
  - Turn and position patients as needed to prevent complications due to bed rest.
  - Hang intravenous bags at the appropriate level.
  - Accurately read the volumes in body-fluid-collection devices hung below bed level.
  - Perform cardiopulmonary resuscitation.
  - Transport patients using stretchers or wheelchairs.
- **Fine motor skills** sufficient to perform psychomotor skills integral to patient services. Examples of relevant activities:
  - Safely dispose of needles in sharps containers.
  - Manipulate small equipment and containers, such as syringes, vials, and ampules, in preparation for contrast-media administration.
- **Physical endurance** sufficient to complete assigned periods of clinical practice.
- **Ability to speak, comprehend, read, and write English** at a level that meets the need for accurate, clear, and effective communication.





- **Emotional stability** to function effectively under stress, to adapt to changing situations, and to follow through on assigned patient-services responsibilities.
- **Cognitive ability** to collect, analyze, and integrate information and knowledge to make clinical judgments and manage decisions that promote positive patient outcomes.

### **Physical Requirements**

It is essential that Radiologic Technology students be able to perform a number of physical activities in the clinical portion of the program. At a minimum, students will be required to lift and/or reposition patients, stand for several hours at a time, and perform bending and twisting activities. Students will be required to transport patients on gurneys and in wheelchairs, move heavy equipment throughout the clinical site, and must be physically capable of performing CPR in an emergency situation. A standard guideline assigned to weight-lifting capability is 50 pounds; however, students will encounter situations requiring them to lift and manipulate greater than 50 pounds. It is advisable that students consult with their physician(s) prior to the start of this program, and determine their ability to perform the necessary job requirements. Students who have a chronic illness or condition must be capable of implementing safe, direct patient care while maintaining their own current treatments or medications.

The clinical experience also places students under considerable mental and emotional stress as they undertake responsibilities and duties impacting patients' lives. Students must be able to demonstrate rational and appropriate behavior under stressful conditions.

### **Infectious Disease**

Students are at risk for infectious pathogens due to occupational exposure to blood or other potentially infectious materials. Prior to scheduled clinical experiences, all students will receive instruction on universal precautions and risk-reduction methods for exposure to substances with the potential for creating a hazard in the healthcare setting. Universal precautions are infection-control guidelines developed by the Center for Disease Control that are designed to protect healthcare workers and prevent skin and mucous membrane exposure during contact with patients' blood and body fluids. Students must strictly adhere to universal precautions including the appropriate use of hand washing, protective barriers, and care in the use and disposal of needles and other sharp instruments.



## Immunizations

Students are responsible for submitting all immunizations to CastleBranch and must remain in compliance with all mandated immunizations and immunization records, adhere to all deadline requirements, and submit copies of updates to immunization records, including updates, to their CastleBranch accounts.

All immunization records must include the student's name, the name and signature of the healthcare provider administering the immunization, and the date.

## Required Immunizations

1. **MMR** (measles/rubeola, mumps, rubella)
  - 2 vaccinations; **or**
  - positive antibody titer for all 3 components (lab report required)
2. **Varicella** (chicken pox)
  - 2 vaccinations; **or**
  - positive antibody titer (lab report required)
3. **Tetanus, Diphtheria & Pertussis (TDaP)**

Provide documentation of a TDaP vaccination within the last 10 years. Students with a TDaP older than 10 years or without proof of a current TDaP will need to get a TDaP booster. The renewal date will be set for 10 years from the administered date of the booster. *Optional:* For this requirement, a vaccination record more recent than 9 years is recommended.
4. **Tuberculosis (TB Skin Test)**
  - 2-step (two separate tests and readings) TB skin test within the past 12 months;
  - If positive results, provide a clear chest X-ray (lab report and an annual statement signed by a health professional confirming that the student does not have active tuberculosis are required).

The renewal date will be set for 1 year for negative tests and 2 years for chest X-rays. The TB test or chest X-ray must be **renewed prior to the semester start if the expiration date occurs while a semester is in progress.**



**For TB test renewal**, one of the following is required:

1-Step TB Skin Test

**5. Hepatitis B**

- vaccine series; or
- positive antibody titer (lab report required)

**6. Influenza**

Each season there are new strains of flu, which requires the production of a new vaccine to cover them. The flu “season” generally runs from September through March. Students should wait to get a flu shot until the new vaccine becomes available in the fall.

**7. COVID-19 Vaccine**

1. Provide proof of two-dose vaccination of Pfizer-BioNTech or Moderna Vaccine.  
OR
2. Provide proof of one dose vaccination of Johnson & Johnson’s Janssen vaccine.
3. Also, provide proof of a booster dose if there has been sufficient interval (5 or more months) since your initial vaccination.
4. If applicable, provide a copy of your completed exemption form noting that by declining the Vaccine, you continue to be at risk of acquiring COVID-19. Please note that a completed exemption form does not guarantee clinical or simulation placement and may result in required removal from the clinical course, resulting in a possible incomplete, withdrawal, or failure of the program of study.

Please note that although Yavapai College may grant an exemption, the clinical facility has the ultimate authority over exemption policies and procedures. They may request additional information and/or deny any specific student exemption. In the event of a changed vaccine requirement or refusal to accept an exemption request, the program will use reasonable efforts to find another placement, but such alternative placement may not be possible, resulting in an inability to complete the required clinical course and program of study.

**Professional Liability Insurance**

The Radiologic Technology Program carries professional liability insurance for activities conducted by its faculty and students.



## **Student Health/Accident Insurance**

The Radiologic Technology Program does *not* assume financial responsibility for student healthcare. *It is the responsibility of each student to provide his/her own personal health insurance.* Coverage must be maintained for the entire enrollment period in the Radiologic Technology Program.

## **National Criminal Background Checks**

National criminal background checks are required by clinical-education agencies. All background checks include the past 7 years and a Sex Offender Registry search. The program advises that each student self-report to the Program Director any criminal activity that may impact eligibility for clinical attendance or certification by the American Registry of Radiologic Technologists.

## **Drug Testing**

Screening tests for alcohol and drugs are required for all students admitted to the Radiologic Technology Program prior to any actual clinical assignments; “for cause” testing will be done as needed (the Radiologic Technology Program will make the arrangements). No advance notice will be given. **Refer to the appendix for detailed information.**

- Yavapai College's policy is to provide an environment free of drugs and alcohol. The use of illegal drugs and abuse of alcohol pose significant threats to health and can be detrimental to the physical, psychological, and social well-being of the user and the entire Yavapai College community and is prohibited. Campus Safety will be notified if a student exhibits an impaired state in the classroom environment.
- Yavapai College is committed to limiting exposure to the harmful effects of primary and secondary smoke to campus students, visitors, and employees. In order to reduce the harmful effects of tobacco use and to maintain a healthful working and learning environment, the college prohibits smoking, including vaping, on all campuses except in designated smoking areas as per [Smoking & Tobacco Use \(10.09\)](#).

## **CPR-Basic Life Support (BLS) for Healthcare Providers**

CPR-BLS will be obtained during the first semester of the program.



All students must have valid, *current* BLS for Healthcare Providers certification through the American Heart Association. Online courses are not acceptable for *initial* BLS certification. *Renewal* of certification may be a hybrid course (online course with an in-person skills check-off).

Students who do not have current BLS certification may not participate in clinical experiences and will be considered absent. Students must remain BLS-certified throughout the program. All renewal cards should be uploaded to the student's CastleBranch account prior to the card expiration date.

### **Clinical Education Compliance**

MyClinicalExchange compliance requirements must be completed 30 days prior to the start date of your clinical rotation per the affiliation agreements in place between the agencies and Yavapai College. Failure to complete compliance requirements within the time-frame could result in failure of the course and ultimately dismissal from the program.

All students shall attend/complete a clinical education system-specific orientation during the first week of their rotation. Additionally, students will receive an individual department specific orientation from their recognized clinical preceptor or a designated staff technologist. Safety guidelines pertaining to staff and patients are included in these orientations. Upon completing the orientation, students must submit documentation to the Clinical Coordinator via Canvas course confirming that they have completed the orientation. Failure to complete orientation forms within the first week of a rotation will result an absence for each day it is late and all missed time must be made-up within that semester.

**\*Note: While updating documents in MyClinicalExchange, ensure documents are up-to-date in CastleBranch. Requirement per affiliation agreements with agencies.\***

### **Clinical Education Dress Code**

Students are required to dress in the approved uniform of pewter scrubs at all times when representing Yavapai College in the clinical-education courses conducted at affiliated healthcare organizations. Students who are not in compliance with the dress code will be sent home without attendance credit for the day. Students will be required to make up the lost clinical time. If the facility has a more restrictive policy regarding dress code, then the student must follow it.

Required attire for hospitals/imaging centers:

- Scrubs brand: Any with minimal adornments



- Scrubs color: Pewter
- Scrubs have embroidering on the top left area of the scrub top. The embroidering is “Yavapai College Radiology” in script style with white thread
- Scrubs will also have a Radiologic Sciences Patch on the right shoulder
- Shoes: Uniform-style black, closed-toe and secure heel (closed or strap), leather or vinyl uppers (nonporous material), low rubber heel. No canvas tennis shoes or sandals are permitted. Clogs with heel straps are allowed (no holes on the top. Shoe laces are to be black, clean, and tied at all times
- Socks: Clean, black, grey, or white, non-patterned socks or hose must be worn
- Lead markers
- Student name badges must be worn at all times in the clinical setting, with clips attaching the name badge to the collar. Lanyards are not allowed as they may swing forward and interfere with patient care
- A radiation monitor must be worn at all times at the collar level
- The uniform must fit properly, and be clean and pressed at all times
- ***Uniforms should not be worn outside of the clinical-education settings to minimize the spread of pathogens***
- Black, white or gray warm-up jackets are permitted as well as black, white or gray long sleeve undershirts may be worn
- Tattoos may be considered offensive or inappropriate and must be covered

## Personal Hygiene

- Bathing and use of unscented deodorant before arriving in clinical agencies is required.
- Perfume, after-shave, and other fragrant products may not be worn in clinical settings. They are potentially harmful to people with respiratory disease, allergies, nausea, and other health problems.
- Hair must be well-groomed, clean and controlled, and off the collar. Moustaches and beards must be clean, well-groomed, and trimmed short.
- Make-up should be unobtrusive and used in moderation.
- Jewelry is limited to one watch; one ring per hand; and a small bracelet. Only one conservative gold or silver chain may be worn on the neck inside the uniform collar. Beads are not allowed. Only small, conservative stud earrings may be worn for pierced ears. No other facial jewelry is authorized. All jewelry is subject to the instructor’s approval.
- No artificial nails are permitted. Fingernails will be kept short and well-





manicured. Only clear nail polish may be worn if not chipped or cracked. Nail polish is prohibited in operating rooms and labor and delivery areas.

- Shorts, mini-skirts, frayed pants, sweat pants, flip flops, low-cut or belly-baring tops, etc., are not acceptable for coming to or leaving from the clinical setting.
- Chewing gum during clinical assignments is not permitted.

### **Name Badges**

Name badges are an essential part of a student's uniform; all students will be given a name badge at the start of their rotation by the site's policy. Students who damage or lose their name badge should notify the Clinical Coordinator for a replacement **at the student's expense**.

### **Lead Markers**

X-ray lead markers consist of the letter "L" and "R" along with the student's [3] initials and must be used for proper identification on all images produced by students. Students who lose their markers must notify the Clinical Coordinator immediately. Without appropriate markers, students cannot participate in clinical experiences. Students will be provided one set; if they are lost, **it is the responsibility of the student to replace them**.

- Replacements **MUST** be:
  - R=Red
  - L=Blue
  - 3-Initials
  - Position BB's

## **Clinical Education Safety**

### **Administration of Contrast Media**

Students are not allowed to administer contrast media or any other pharmacological agent. Students are allowed to draw up contrast and prepare a site for injection only under the supervision of a qualified practitioner and in accordance with the department policies of the clinical education setting. Students may perform venipuncture only after achieving competency under the supervision of a qualified practitioner (RT).



## **Dosimetry Monitors**

Dosimetry monitoring devices must be worn by students in clinical-education and laboratory settings at all times, especially when the student is performing a radiological procedure. Failure to comply with this policy will result in a student being removed from the radiation area.

A control badge is located in the Program Director's office. Badges must be given to the Clinical Coordinator once per semester. If a dosimetry device is lost or misplaced, the student must notify the Clinical Coordinator immediately, and **a replacement device will be ordered at the student's expense.**

It is each student's responsibility to review dosimetry reports with the Clinical Coordinator/Program Director and verify the review with their initials. Dosimetry reports are maintained in the Program Director's office and are monitored by the Program Director and Clinical Coordinator.

Students who receive over 20mRem per semester will receive documented radiation safety counseling. The Program Director will conduct a review of these reports semesterly and an annual review. Documentation of compliance will be readily available to the Arizona Department of Health Services Bureau of Radiation Control.

Students are required to wear lead protection devices during fluoroscopic exams. Students will wear dosimetry badges outside of the lead apron at the collar level when performing fluoroscopy.

## **Holding Patients**

Students are restricted from holding patients and equipment during radiation exposures. Individuals (i.e., qualified practitioners, family members assisting with the procedure) holding patients or equipment for procedures should be provided with adequate shielding and should be positioned so that no parts of their bodies are exposed to the primary radiation beam. To assist in reducing exposure, the student shall restrict the beam with close collimation to the area of interest. Pregnant women or women trying to become pregnant should not hold patients. Persons under the age of 18-years of age should not hold patients.



## **Shielding**

Shielding involves the use of protective barriers. Students are required to shield all patients. Safe practice standards also include the requirement that all female patients of childbearing age must be questioned regarding the possibility of pregnancy. This information should be documented according to the policy of the clinical-education site.

<https://www.asrt.org/promotions/task-force-on-patient-shielding>

## **Radiation Safety Procedures**

The Yavapai College Radiologic Technology Program is committed to an effective radiation protection program. The ultimate goal of safe radiation practices is to eliminate unnecessary exposures of radiation and to reduce all exposures to levels that are “As Low As Reasonably Achievable” (ALARA). The ALARA principle is a cornerstone of the Arizona Department of Health Services Bureau of Radiation Control as well as the Nuclear Regulatory Commission (NRC).

Students will adhere to proper radiation safety practices consistent with clinical site policies and the scope of practice in radiology to include the following:

- Students should abide by the As Low As Reasonably Achievable (ALARA) concept at all times. Laboratory exposures should be limited to necessary instruction.
- Students should employ the cardinal principles of radiation protection:
  - a. Time
  - b. Distance
  - c. Shielding
- Students are to use monitoring devices in the clinical-education settings at all times. Dosimetry monitors must be exchanged as designated by the program.
- Students are to stand behind the lead-lined control area of a radiographic room when making an exposure.
- All doors leading into a radiographic room from a public corridor are to be closed prior to making an exposure. Observe caution signs and safety interlock equipment.
- Review exposure records and reports.
- Adhere to the program’s Pregnancy Policy.
- Meet with the Program Director for appropriate radiation safety counseling when exposure results exceed 20mRem per semester.
- Shield all patients who are in their reproductive years.



- Screen all female patients of child-bearing age regarding the possibility of pregnancy.
- Students should not hold or support a patient during exposure.
- A lead apron should be worn or a mobile lead screen used, when available, for protection. Students should stand as far from the patient and tube as possible.
- Students shall not operate fluoroscopic units by themselves.

### **MRI Safety Screens**

Students may assist radiologic technologists with the transport of patients to various areas of the imaging department to include MRI. Students will receive an MRI safety screen at their initial clinical-site orientation. Students who do not meet the screening safety criteria for MRI exams will not be permitted in the MR department. \*\*Form can be found in the back of this handbook, on PlatinumPlanner, and within your Canvas course.\*\*

## **Student Supervision**

### **Direct Supervision**

Students must be directly supervised by a qualified practitioner who: (1) reviews the procedure in relation to the student's achievement; (2) evaluates the condition of the patient in relation to the student's knowledge; (3) is present during the procedure; and (4) reviews and approves the examination. Also, the practitioner remains physically present during the procedure and approves the exam and/or any images produced. Portable examinations and procedures in surgery must be performed under direct supervision.

### **Repeat Images**

A qualified practitioner is present during student performance of a repeat of any unsatisfactory radiograph.

### **Indirect Supervision**

Indirect supervision is provided by a qualified practitioner who is immediately available to assist students regardless of the level of student achievement. "Immediately available" is interpreted as the physical presence of a qualified practitioner adjacent to the room or location where a radiographic procedure is being performed. This availability applies to



all areas where ionizing radiation equipment is in use. *A closed door between the qualified practitioner and student is not an acceptable form of indirect supervision as the technologist is not immediately available.*

**Students may not assume the responsibilities or take the place of professional staff.**

## **Pregnancy Policy**

In compliance with the NRC Regulatory Guide 8.13 "Instruction Concerning Prenatal Radiation Exposure," if a student becomes pregnant it is her right to declare or not to declare her pregnancy. Declaration of pregnancy is completely voluntary. If a student decides to declare pregnancy, she is encouraged to inform the Program Director of the pregnancy as soon as possible. In the absence of any voluntary disclosure of pregnancy, students are not considered to be pregnant. If the student elects to inform the Program Director, she must do so in writing.

The program is committed to maintaining a high quality of academic and clinical integrity for the pregnant student. The pregnant student will not be placed at an academic or clinical disadvantage due to pregnancy, and the student is given the option to continue the program without modification. The student may withdraw the declaration at any time in writing.

A written declaration should include:

- Student's name
- Student's signature
- Month and year of conception
- Estimated delivery date

The pregnant student will be issued a fetal badge that must be worn at the waist with or without an apron. The pregnant student will receive counseling regarding fetal radiation-protection practices and be provided a copy of the NRC Regulatory Guide 8.13, "Instruction Concerning Prenatal Radiation Exposure." The student will be monitored at the prescribed lower dose limit until giving birth and/or withdrawing her declaration.

The Program Director will monitor the student's fetal radiation dosage on a monthly basis. The lower dose limit for a declared pregnancy will remain in effect until the student gives birth or provides written notification to withdraw her pregnancy declaration.



If a student has healthcare limitations related to her pregnancy, the student must provide her Clinical Coordinator a physician's written directive regarding her status.

If class/clinical hours are missed, the student must coordinate with the Clinical Coordinator and Program Director regarding absences. Upon returning to school after delivery, a physician's written release must be submitted to the Clinical Coordinator or Program Director.

Certain clinical situations/diagnoses may pose a health risk. The pregnant student assumes the responsibility for safeguarding her health, and the health of the unborn child.

### **Nuclear Regulatory Commission (NRC) Guidelines for Pregnancy**

The NRC regulations on radiation protection are specified in Title 10, Part 20 of the Code of Federal Regulations, "Standards for Protection Against Radiation," and Section 20.1208, "Dose Equivalent to an Embryo/Fetus," which requires licensees to "ensure that the dose to an embryo/fetus during the entire pregnancy, due to occupational exposure of a declared pregnant woman, does not exceed 0.5 rem (5.0 mSv)."

A declared pregnant woman is defined in Title 10, Part 20 of the Code of Federal Regulations, 20.1003, as a woman who has voluntarily informed her employer, in writing, of her pregnancy and the estimated date of conception.

NRC Regulatory Guide 8.13 "Instruction Concerning Prenatal Radiation Exposure" (Draft was issued as DG-8014), Revision 3, June 1999:

<https://www.nrc.gov/docs/ML0037/ML003739505.pdf>

Section 20.1208, "Dose Equivalent to an Embryo/Fetus"

<https://www.nrc.gov/reading-rm/doc-collections/cfr/part020/part020-1208.html>

## **Clinical Education Conduct**

### **Cell Phones and Texting**

Yavapai College is committed to providing a quality learning environment. All cell phones must be placed in a non-audible mode while in clinical assignments. If cell phones are deemed disruptive during clinical assignments, this policy may be reconsidered and changed to a "no cell phone" policy. Students should check messages during designated breaks.

Acceptable times to use your mobile device:



- Clocking in/out of your assignment or for lunch
- Logging exams at the end of the day
- Competency sign-off with a technologist

### **Parking Violations**

Each clinical setting has their own parking requirements. These will be given to you by the clinical affiliate when completing your compliance requirements. Students are expected to park in the designated employee parking. If the student receives two violations for the duration of the program a Step 2 of the Step Improvement Plan will be issued. If a third violation is reported during the program the student will be moved to a Step 3 and dismissed from the program.

### **Zero-Tolerance Guidelines**

Yavapai College has a Zero Tolerance for Threats and Disruptive Behavior policy (YC Policy 2.26).

Any Radiologic Technology Program student engaging in the following behaviors is subject to immediate dismissal from classes and disciplinary action as described in the *Yavapai College Student Code of Conduct* (<https://www.yc.edu/v5content/student-services/codeofconduct.htm>) and the *Yavapai College Radiologic Technology Student Handbook*.

1. Intentionally or recklessly causing physical harm to any person on the campus or at a clinical site, or intentionally or recklessly causing reasonable apprehension of such harm.
2. Unauthorized use or possession of any weapon or explosive device on the campus or at a clinical site.
3. Unauthorized use, distribution, or possession of any controlled substances or illegal drug for any purpose (i.e., distribution, personal use) on the campus or at a clinical site.
4. Any misconduct covered by the *Yavapai College Student Code of Conduct*.





## **Personal Conversation Standards**

- Students should avoid personal conversations with clinical staff and fellow students in the presence of patients.
- Students must not use profanity or profane gestures anywhere while on the grounds of the clinical-education setting.
- Students should not engage in or listen to negativity or gossip. Listening without acting to stop it is the same as participating.
  - Students should not make negative comments about clinical staff or fellow students
  - Student should not engage in any discussion regarding criticism of a physician, perceived workplace difficulties, or job dissatisfaction among clinical-education setting personnel.
- Students should show respect by not interrupting or having “side” conversations when someone is speaking.
- Students should not discuss results of exams with patients.
- Students should keep the lines of communication open and not react defensively.
- Students are representatives of the Yavapai College Radiologic Technology Program and are expected to cultivate a relationship of mutual respect with the employees in a clinical education setting.

## **Clinical Site and Preceptor Evaluations**

Students will complete evaluations during each rotation regarding the effectiveness of the clinical preceptors, clinical staff and clinical sites. The results are summarized by the Program Director and, if statistically valid, are shared with various communities of interest in the college and clinical education settings. Results can be discussed at advisory board or faculty meetings. Finally, feedback is gathered and assessed to assist with program improvements.



## **Clinical Site Misconduct Reporting**

During clinical education experiences, students should report various types of misconduct to ensure a safe, ethical, and professional learning environment. Approximately midway through your rotation, the Clinical Coordinator will collect feedback regarding the site and again at the end of the rotation. This is to help ensure concerns can be addressed in a timely manner. The following are some key types of misconduct that should be reported:

- Patient safety violations
- Workplace safety concerns
- Inadequate supervision per Student Supervision Policy
- Ethical violations
  - HIPPA breaches
  - Bias and discrimination: based on race, gender, sexual orientation, religion, or other personal characteristics.

## **Clinical Competency Requirements**

Demonstration of clinical competence means that the candidate performs the procedure independently, consistently, and effectively during the course of the program.

Demonstration of clinical competence requires that the Program Director or the Program Director's designee has observed the candidate performing the procedure independently, consistently, and effectively during the course of the candidate's formal educational program.

## **Clinical Education Activities Tracking**

Clinical Education documentation is tracked via the program's web-based application, PlatinumEducation. This application is accessible and available on the internet at each clinical education site, as well as; a mobile application for devices. It is mandatory for all students to clock in and out each day of their clinical rotation without exception. Clocking in and out must be completed and will be tracked by Geolocation. The tracking application is used to monitor and document various program requirements that include:

- Time Clock – documented daily
  - in/out punches
  - 30 min in/out Lunch punches
- Procedure Logs – documented daily
- Competency Evaluations; including accession numbers



- Progress Reports and Affective Evaluations by Clinical Preceptors
- Progress Reports and Affective Evaluations by Clinical Coordinator
- Clinical Site & Preceptor Evaluations; MANDATORY

Note: Under no circumstances will a student be allowed to clock in for another student. Clocking in for another student constitutes fraud, and *both* students will be dismissed from the program for falsification of records. It is the student's own responsibility to maintain accurate time records.

## **General Performance Considerations:**

### **Radiography-Specific Requirements**

Candidates must demonstrate competence in the clinical activities listed below:

- 10 mandatory general patient care activities;
- 36 mandatory imaging procedures;
- 15 elective imaging procedures to be selected from a list of 35 procedures;
- 1 of the 15 elective imaging procedures must be selected from the head section; *and*
- 2 of the 15 elective imaging procedures must be selected from the fluoroscopy studies section.

One patient may be used to document more than one competency. However, each individual procedure may be used for only one competency (e.g., a portable femur can only be used for a portable extremity or a femur but not both).

### **Simulated Performance**

ARRT defines simulation of a clinical procedure routinely performed on a patient as the candidate completing all possible hands-on tasks of the procedure on a live human being using the same level of cognitive, psychomotor, and affective skills required for performing the procedure on a patient.

ARRT requires that competencies performed as a simulation must meet the same criteria as competencies demonstrated on patients. For example, the competency must be performed under the direct observation of the Program Director or Program Director's designee and be performed independently, consistently, and effectively. Simulated performance must meet the following criteria:

- Simulation of imaging procedures requires the use of proper radiographic equipment without activating the x-ray beam.



- A total of ten imaging procedures may be simulated. Imaging procedures eligible for simulation are noted within the chart.
- If applicable, the candidate must evaluate related images.
- Some simulations are acceptable for General Patient Care.
- These do not count toward the ten imaging procedures that can be simulated.

### **Patient Diversity**

Demonstration of competence should include variations in patient characteristics such as age, gender, and medical condition.

### **General Patient Care**

Candidates must be CPR certified and demonstrate competence in the general patient care procedures listed below. The activities should be performed on patients whenever possible, but simulation is acceptable.

<b>General Patient Care Procedures</b>	<b>Date Completed</b>	<b>Competence Verified By</b>
CPR/BLS Certified		
Vital Signs – Blood Pressure		
Vital Signs – Temperature		
Vital Signs – Pulse		
Vital Signs – Respiration		
Vital Signs – Pulse Oximetry		
Sterile and Medical Aseptic Technique		
Venipuncture*		
Assisted Patient Transfer (e.g., Slider Board, Mechanical Lift, Gait Belt)		
Care of Patient Medical Equipment (e.g., Oxygen Tank, IV Tubing)		

\*Venipuncture can be simulated by demonstrating aseptic technique on another person, but then inserting the needle into an artificial forearm or suitable device.

### [ARRT.org Clinical Experience Requirements](#)

Please refer to following pages for an example of the Positioning Skill Rubric that will be used during clinicals for each of the required examinations to satisfy ARRT's clinical education.



## Positioning Skill Rubric

Comp Rubric - 25 points minimum to pass the competency. Comp fail at tech discretion.

### Point Scale:

- 0 = Performance is unacceptable
- 1 = Performance only meets part of the objective
- 2 = Performance meets all of objective or Not Applicable

### Exam Management

1. Performs proper hand hygiene, aseptic technique or isolation procedures. \*

0	1	2
---	---	---

2. Covers all 5 components of AIDET. (Acknowledge, Introduce, Duration, Explanation and Thank You) \*

0	1	2
---	---	---

3. Confirms order from provider with paperwork, if applicable. \*

0	1	2
---	---	---

4. Sets up room / equipment appropriately for exam. \*

0	1	2
---	---	---

5. Takes charge of exam. \*

0	1	2
---	---	---

6. Gives thorough and clear instructions to patient during exam (positioning, breathing, etc.). \*

0	1	2
---	---	---

### Image Evaluation / Anatomy / Image Analysis

(student review with Technologist)

7. Utilizes proper marker and marker placement for all projections. \*

0	1	2
---	---	---

8. Demonstrates proper central ray centering and / or CR angle for each projection (student must verbalize during review). \*

0	1	2
---	---	---

9. Performs proper collimation to body part. \*

0	1	2
---	---	---

10. Sets / selects appropriate technique selection. \*

0	1	2
---	---	---

11. Obtains quality image(s) for submission. \*

0	1	2
---	---	---

12. Total number of repeats for this exam: \*

0	1	2
---	---	---

2 points = 0 repeats

1 point = 1 repeat

2 or more repeats = automatic failure of exam

13. For repeat image(s), demonstrates knowledge of proper correction. \*

0	1	2
---	---	---

14. Cites and reviews minimum of 2 image analysis criteria on collective image(s). \*

0	1	2
---	---	---

15. Anatomy Review: Student able to correctly identify a minimum of 5 anatomical structures. \*

0	1	2
---	---	---



☐ Pass: ☐ Fail:

Accession Number \*

Reason:

Technologist's Comments and/or Constructive Criticism:

Technologist's Signature: \*

Date: \*

Technologist's Printed Name: \*

Each section of this form that has a red asterisk is required in order to be submitted and counted towards a competency. You will find this in PlatinumPlanner, within your clinical course and under skills. The form will be attached to the competency you are attempting to complete.

The next few pages are the ARRT exam requirements. This is a good form to utilize to keep track outside of PlatinumPlanner of your progress.

**Institutional protocol will determine the positions and projections used for each procedure. When performing imaging procedures, the candidate must independently demonstrate appropriate:**

- patient identity verification;
- examination order verification;
- patient assessment;
- room preparation;
- patient management;
- equipment operation;
- technique selection;
- patient positioning;
- radiation safety;



Imaging Procedures	Mandatory or Elective		Eligible for Simulation	Date Completed	Competence Verified By
	Mandatory	Elective			
<b>Chest and Thorax</b>					
Chest Routine	✓				
Chest AP (Wheelchair or Stretcher)	✓				
Ribs	✓		✓		
Chest Lateral Decubitus		✓	✓		
Sternum		✓	✓		
Upper Airway (Soft-Tissue Neck)		✓	✓		
Sternoclavicular Joints		✓	✓		
<b>Upper Extremity</b>					
Thumb or Finger	✓		✓		
Hand	✓				
Wrist	✓				
Forearm	✓				
Elbow	✓				
Humerus	✓		✓		
Shoulder	✓				
Clavicle	✓		✓		
Scapula		✓	✓		
AC Joints		✓	✓		
<b>Trauma:</b> Shoulder or Humerus (Scapular Y, Transthoracic or Axial)*	✓				
<b>Trauma:</b> Upper Extremity (Non-Shoulder)*	✓				
<b>Lower Extremity</b>					
Toes		✓	✓		
Foot	✓				
Ankle	✓				
Knee	✓				
Tibia-Fibula	✓		✓		
Femur	✓		✓		
Patella		✓	✓		
Calcaneus		✓	✓		
<b>Trauma:</b> Lower Extremity*	✓				

\* Trauma requires modifications in positioning due to injury with monitoring of the patient's condition.





Imaging Procedures	Mandatory or Elective		Eligible for Simulation	Date Completed	Competence Verified By
	Mandatory	Elective			
<b>Head</b> – Candidates must select at least one elective procedure from this section.					
Skull		✓	✓		
Facial Bones		✓	✓		
Mandible		✓	✓		
Temporomandibular Joints		✓	✓		
Nasal Bones		✓	✓		
Orbits		✓	✓		
Paranasal Sinuses		✓	✓		
<b>Spine and Pelvis</b>					
Cervical Spine	✓				
Thoracic Spine	✓		✓		
Lumbar Spine	✓				
Cross-Table (Horizontal Beam) Lateral Spine (Patient Recumbent)	✓		✓		
Pelvis	✓				
Hip	✓				
Cross-Table (Horizontal Beam) Lateral Hip (Patient Recumbent)	✓		✓		
Sacrum and/or Coccyx		✓	✓		
Scoliosis Series		✓	✓		
Sacroiliac Joints		✓	✓		
<b>Abdomen</b>					
Abdomen Supine	✓				
Abdomen Upright	✓		✓		
Abdomen Decubitus		✓	✓		
Intravenous Urography		✓			



Imaging Procedures	Mandatory or Elective		Eligible for Simulation	Date Completed	Competence Verified By
	Mandatory	Elective			
<b>Fluoroscopy Studies</b> – Candidates must select two procedures from this section and perform per site protocol.					
Upper GI Series, Single or Double Contrast		✓			
Contrast Enema, Single or Double Contrast		✓			
Small Bowel Series		✓			
Esophagus ( <i>NOT</i> Swallowing Dysfunction Study)		✓			
Cystography/Cystourethrography		✓			
ERCP		✓			
Myelography		✓			
Arthrography		✓			
Hysterosalpingography		✓			
<b>Mobile C-Arm Studies</b>					
C-Arm Procedure (Requiring Manipulation to Obtain More Than One Projection)	✓		✓		
Surgical C-Arm Procedure (Requiring Manipulation Around a Sterile Field)	✓		✓		
<b>Mobile Radiographic Studies</b>					
Chest	✓				
Abdomen	✓				
Upper or Lower Extremity	✓				
<b>Pediatric Patient</b> (Age 6 or Younger)					
Chest Routine	✓		✓		
Upper or Lower Extremity		✓	✓		
Abdomen		✓	✓		
Mobile Study		✓	✓		
<b>Geriatric Patient</b> (At Least 65 Years Old and Physically or Cognitively Impaired as a Result of Aging)					
Chest Routine	✓				
Upper or Lower Extremity	✓				
Hip or Spine		✓			
<b>Subtotal</b>					
Total Mandatory exams required	36				
Total Elective exams required		15			
Total number of simulations allowed			10		



## Special Imaging Observations

The Yavapai College Radiologic Technology Program offers students, **who have completed all of their competencies in fall term #2**, a volunteer experience to observe the operation of equipment and procedures in a chosen imaging modality listed below. (during spring term #2)

The special imaging rotation include:

- Bone Density
- Computed Tomography
- Magnetic Resonance Imaging
- Ultrasound
- Positron Emission Tomography
- Cardiac Catheterization
- Special Procedures/Interventional Radiology
- Nuclear Medicine
- Radiation Therapy
- Mammography – All students, male and female, will be offered the opportunity to participate in mammography clinical rotations. The program will make every effort to place a male student in a mammography clinical rotation if requested; however, the program is not in a position to override clinical-setting policies that restrict clinical experiences in mammography to female students. Male students are advised that placement in a mammography rotation is not guaranteed and is subject to the availability of a clinical setting that allows males to participate in mammographic imaging procedures. The program will not deny female students the opportunity to participate in mammography rotations if clinical settings are not available to provide the same opportunity to male students.

## Grading

Grades are based largely on evaluations compiled over each clinical rotation by the Clinical Coordinator or designated instructor. Feedback from the clinical staff is acquired and taken into consideration. Clinical Preceptors provide progress reports and affective evaluations during each rotation that are accounted for in the Clinical Coordinator or designated instructor's final evaluation of the student.

You must meet the minimum competency and hour requirements of the semester in order to progress within the program.



## **Commencement and Pinning Ceremony**

### **Commencement**

Commencement is held each May to confer final grades and celebrate the successful completion of students' academic programs or degrees. Attendance is required to represent the Radiologic Technology Program. The Yavapai College Registrar conducts a mandatory orientation before the ceremony to review the process and acceptable attire. Student's receive an email to apply for graduation and the dates of orientation directly from the Registrar.

### **Cap and Gown**

- Must be black.
- No adornments glued to cap or gown.
- Nothing sticking off the top of the cap-rhinestones are acceptable at most.
- No profanity or inappropriate imagery/innuendos.
- No custom stoles- Specific Honor Society branded stoles and/or cords only.

### **Pinning Ceremony**

A Pinning Ceremony will be held in May to induct graduates into the profession of Radiologic Technology. This honor should be taken seriously. Attendance is mandatory for all graduates and first-year students. A family member or designated appointee chosen by the student may perform the pinning.

### **Attire**

- Graduates: Uniform scrubs and shoes
  - Pewter gray.
  - No embroidery, no program patch.
  - Clean and pressed.
- First-year students: Black pants only, program uniform polo appropriately tucked with a belt.



## Dismissal and Grievances

### Classroom and Clinical Education

Students will demonstrate professional conduct at all times. The Yavapai College Radiologic Technology Program reserves the right to suspend or dismiss a student. Although NOT an all-inclusive list, the following examples are considered conduct that violate the professional standards of the program and can lead to immediate dismissal:

1. Unprofessional conduct, including but not limited to violations of confidentiality; failure to show respect for patient, significant others, peers, clinical staff, and instructors.
2. Dishonesty, including but not limited to stealing from the College or a clinical agency; plagiarism of papers; cheating on exams; unauthorized possession of examinations; signing or clocking in or out for another student, etc.
3. Failure to meet clinical performance expectations.
4. Failure to complete required clinical competencies.
5. Failure to maintain appropriate conduct with clinical staff, fellow students, and instructors.
6. Failure to maintain clinical competency already demonstrated or learned, while incorporating new skills and theory.
7. Failure to improve unsatisfactory clinical performance after counseling.
8. Gross negligence in performance of duty that may cause physical or emotional jeopardy to a patient.
9. Failure to immediately report a patient-care error to the clinical preceptor and/or responsible staff nursing personnel.
10. Absences accrued, in accordance with program attendance policy.
11. Being under the influence of alcoholic beverages, drugs that impair judgment, or illegal drugs while in the clinical setting (see Appendix).
12. Fraudulent or untruthful charting in a medical record.
13. Unauthorized release of privileged information.
14. Inappropriately using the internet in the laboratory, classroom, or clinical setting.
15. Clocking in to be paid by your employer while in clinicals as a student.
16. The clinical site/system has relinquished student privileges, i.e. student is unwelcome to return to facility for future rotations.
17. Radiating self, patient, or anyone without a written physician's order.
18. Radiating self, patient, or anyone *unnecessarily* to obtain practice or a competency.
19. Failure to perform safely.
20. Failure to park in designated student/employee parking.



21. Failure to follow the [Standards of Ethics](#) for the profession.
22. Failure to follow the [Practice Standards](#) of the profession.

### **Process for Dismissal**

- Student is informed of possible dismissal by the appropriate instructor(s).
- Student will sign instructor's written report of the significant events, attaching a statement if desired.
- The action(s) and report(s) shall be immediately reported to the Radiology Program Director.
- After gathering the necessary incident information, the Program Director will determine next steps either toward the academic process and/or refer to the Student Code of Conduct discipline process. If the matter is referred to the Student Code of Conduct discipline process, the student must confer with the instructor and Chief Judicial Officer or designee before being readmitted to class. If a resolution is not reached, the student may be removed permanently pursuant to disciplinary procedures outlined in the Yavapai College Student Code of Conduct.
- Student may appeal the grade following the appeal procedures outlined in the Yavapai College General Catalog and in this handbook.

### **Appeal Process**

The Radiologic Technology Program's student due-process procedure follows the Yavapai College policy 3.16, "Student Appeal of Academic or Instructional Decisions by Faculty." Students must represent themselves in the appeal process. Issues that may be appealed include, but are not limited to, assignment of grades and course requirements. Students reserve the right not to participate in due process as well. Please refer to the policy link: <https://www.yc.edu/v6/instructional-support/complaints.html>

### **Policy**

A student may appeal an academic or instructional decision by faculty if s/he deems the decision to be made in error. The appeal must be made in a timely manner in accordance with established procedures.

### **Procedure**

A student may only appeal a decision that affects him/her directly and must represent themselves in the appeal process. The appeal of an academic or instructional decision requires documentation that the decision was incorrect.



## **Steps in the Appeal Process**

1. The first step in the appeal process is for the student to contact the faculty member who made the academic or instructional decision. This contact must be made within 10 business days of the official notification date of the decision. For appeals concerning a final grade, official notification is considered to be the date the grade is posted to the student's permanent record.
2. In the event the faculty member and student are unable to reach a mutual agreement within 10 business days, the student may then appeal to the appropriate Dean or designee. The appeal to the Dean or designee must be made within 10 business days in writing using the official form, "Academic or Instructional Decision Appeal to the Dean." All documentation supporting the reason for the appeal must be provided at the time the appeal is submitted. This appeal must succinctly describe the issues involved, evidence that an error was made, and any relevant information. Missing, incomplete or erroneous information may cause the appeal to be rejected.
3. The Dean or designee will review the student's appeal and decide based on the documentation provided by the student, the faculty member, and other relevant information that may include meetings with appropriate individuals. The Dean's or designee's investigation and decision must be concluded within 10 business days of the date the student appealed the decision to the Dean or designee will provide written documentation of the decision to the student and faculty member.
4. In the event the student is dissatisfied with the decision of the Dean or designee, a further appeal may be made to the Vice President for Instruction and Student Development or designee. The appeal must be made in writing within 10 business days of the date the student received notification of the results of the appeal to the Dean. This formal, written appeal must relate only to the original decision that is being appealed. No additional claims or issues will be included or addressed in the review of the appeal.
5. The Vice President for Instruction and Student Development or designee will conduct a formal review of the appeal as presented by the student, including review of relevant policy, review of information provided by the faculty member, and review of the decision by the Dean. The formal review and decision by the Vice President for Instruction and Student Development or designee must be completed within 10



business days of the receipt of the student's written appeal. The decision must be communicated in writing to all involved parties. The decision of the Vice President for Instruction and Student Development or designee is considered final.

### **Non-Academic Complaints**

The Radiologic Technology Program adopts and follows the Yavapai College policy for Non-Academic Complaints as listed on the Student Development website and the Student Code of Conduct.

Student Development:

<http://www.yc.edu/v5content/student-services/nonacademic.htm>

Student Code of Conduct:

<https://www.yc.edu/v5content/student-services/codeofconduct.htm>

### **Readmission to the Program**

The Associate of Applied Science Degree in Radiologic Technology is a 2-year program (five sequential semesters including one summer). The program accepts applicants once per year in the fall semester. Students who are unable to complete the semester or fail to successfully complete a course will be dropped from the program. Students may apply for readmission to the program. Readmission is based on availability and is not guaranteed. *Note:* Following acceptance for readmission, students will start the program from the first semester in the program sequence—not in the semester in which they were last enrolled.





## **Allegations of Non-Compliance with Joint Review Committee on Education in Radiologic Technology (JRCERT) Standards**

All students are provided a copy of the JRCERT standards and sign a form in receipt of the documents. <https://www.jrcert.org/jrcert-standards/>

Students who have concerns regarding non-compliance of JRCERT standards by the program are required to follow the program's policy on due process before contacting JRCERT directly.

JRCERT  
20 North Wacker Drive, Suite 2850  
Chicago, IL 60606-3182  
Phone: 312-704-5300

Students are instructed to access the JRCERT website at [www.jrcert.org](http://www.jrcert.org) to review the process for reporting allegations and the Allegation Reporting Form.

In compliance with the JRCERT standards, the Radiologic Technology Program Director will investigate and address all complaints in a timely fashion.

The program officials are dedicated to implement any resolutions required to maintain compliance.

In accordance with the United States Department of Education (USDE) regulations, records of allegations of non-compliance will be kept by the Program Director.





## **American Registry of Radiologic Technologists (ARRT) Examination & Arizona Department of Health Services (AZDHS) Licensure**

### **Student ARRT Account Creation**

Students are to create their student accounts on the ARRT website in January 2025.

<https://apps.arrt.org/client-app/online-account-setup/landing>

The Program Director will be notified when each account is set-up and will approve them accordingly.

### **Student ARRT Exam Scheduling and Fee**

Beginning on February 18, 2025, students may call or book an appointment online to challenge the national registry exam. It is recommended that students book as soon after graduation as possible. This should help with success in passing the examination as well as help employers hire and onboard quicker.

<https://home.pearsonvue.com/arrt>

Exam fee must be paid at the time of scheduling your exam. \$225.00

<https://www.arrt.org/pages/earn-arrt-credentials/how-to-apply/application-fees>

### **AZDHS Initial Licensure Application and Fee**

<https://www.azdhs.gov/licensing/special/index.php#mrt-provider-info>

Use the checklist on the AZDHS Special Licensing page to ensure you have everything you need to apply for your state license. You'll need to create an account on the ADHS Individual Licensing Portal. [https://individual-](https://individual-licensing.azdhs.gov/s/login/?ec=302&startURL=%2Fs%2F)

[licensing.azdhs.gov/s/login/?ec=302&startURL=%2Fs%2F](https://individual-licensing.azdhs.gov/s/login/?ec=302&startURL=%2Fs%2F)

You'll upload all your documentation to this portal. The fee is \$100.00 and can be paid by credit card.

Processing can take up to 4 weeks and can be tracked on your licensing portal.

# PROGRAM FORMS





## Student Agreement Form

All unconditionally accepted students in the Yavapai College (YC) Radiologic Technology Program are expected to sign and abide by the stipulations spelled out in the Student Agreement Form, and to abide by all College policies and program standards as written in the Student Handbook.

### Agreement

In consideration of the granting of admission to Yavapai College's Radiologic Technology Program, I the undersigned, understand and agree to the following:

- It is agreed that I have been provided with a personal copy of the Student Handbook. I have read the handbook, understand its contents, and have had my questions answered.
- It is agreed that I have been informed of the existence and location of copies of the Program Master Plan, located in the office of the Program Director.
- It is agreed that I understand all program requirements including the need to travel.
- I understand that graduation from the Radiologic Technology Program is contingent upon successful completion of all clinical education and academic course work.
- I understand that violations which appear on the criminal background check may result in denied access to a clinical site and therefore inability to complete the program.
- I understand that there will travel to clinical sites.
- I understand that students may be dismissed from the Radiologic Technology Program for:
  1. Failure to adhere to program requirements, and breaching the rules and regulations of Yavapai College or a clinical affiliation site.
  2. Failure to maintain the required academic standards.

\_\_\_\_\_  
Student's Signature

\_\_\_\_\_  
Date

\_\_\_\_\_  
Student's Name (please print)

\_\_\_\_\_  
Signature of Program Director

\_\_\_\_\_  
Date



## **COVID 19 STUDENT WAIVER OF LIABILITY AND HOLD HARMLESS AGREEMENT**

### **THIS IS AN IMPORTANT DOCUMENT THAT WAIVES YOUR LEGAL RIGHTS**

I, \_\_\_\_\_, understand that my voluntary participation in certain programs or aspects of campus life at Yavapai College may increase my risk of exposure to COVID 19 during the outbreak of COVID 19 in the community because it may not be possible to utilize face coverings or maintain social distancing while participating in the program, or due to the nature of the program, I may be exposed to individuals who have tested positive for COVID 19. These programs include, First Responder, ECE, FEC, PE, OLLI and Performing Arts programs, as well as athletic programs and living in YC Residence Halls. By voluntarily enrolling in and/or participating in these programs, I agree to comply with the following terms:

1. Assumption of risk. I am fully aware of the unusual risks involved and hazards connected with my continued participation in the programs or campus life activities described above during the COVID 19 outbreak. Potential symptoms of the COVID 19 virus include but are not limited to the following: fever, cough, shortness of breath, difficulty breathing, and other flu-like symptoms. COVID 19 may be deadly, particularly in certain patient populations including the immune compromised and the elderly. To minimize risk of exposure, I understand that I will be required to comply with regular temperature checks and not participate in any program or activity if my temperature exceeds 100.4, wear face coverings when possible, practice social distancing where possible, practice effective hand hygiene, stay home when displaying any COVID 19 symptoms, and self-report any positive test for COVID-19 to a College instructor. I further understand that despite these measures, continued participation in these programs could still be hazardous to myself and others, both known and unknown to myself, with whom I may have contact in or outside of the program or activity and for up to fourteen (14) days thereafter. I VOLUNTARILY ASSUME FULL RESPONSIBILITY FOR ANY RISKS OF OR PERSONAL INJURY, INCLUDING DEATH that may be sustained by me as a result of being engaged in the program or activity, WHETHER CAUSED BY THE NEGLIGENCE OF RELEASED PARTIES OR OTHERWISE.
2. Waiver and Release. To the fullest extent permitted by law, I RELEASE, WAIVE, DISCHARGE AND PROMISE NOT TO SUE the College and its board, officers, agents, employees, volunteers, successors and assigns ("Released Parties") from any and all liability, claims, and demands of whatever kind or nature, either in law or in equity, which arise or may hereafter arise from my participation in the program or activity whether caused by the negligence of the Released Parties. It is also understood College does not assume any responsibility for or obligation to provide financial assistance or other assistance, including but not limited to medical, health or disability insurance in the event of injury, illness, or death.



Indemnification. I further hereby AGREE TO INDEMNIFY AND HOLD HARMLESS the RELEASED PARTIES from any loss, liability, damage or costs, including court costs and attorney fees, that they may incur due to my participation in the College program or activity, WHETHER CAUSED BY NEGLIGENCE OF RELEASED PARTIES or otherwise.

3. It is my express intent that this Waiver of Liability and Hold Harmless Agreement shall bind the members of my family and spouse, if I am alive, and my heirs, assigns and personal representative, if I am deceased, and shall be deemed as a RELEASE, WAIVER, DISCHARGE AND PROMISE NOT TO SUE the above-named RELEASED PARTIES. I hereby further agree that this Waiver of Liability and Hold Harmless RELEASED PARTIES shall be construed in accordance with the laws of the State of Arizona.
4. IN SIGNING THIS RELEASE, I ACKNOWLEDGE AND REPRESENT THAT I have read this Waiver of Liability and Hold Harmless Agreement, understand it and sign it voluntarily as my own free act and deed; no oral representations, statements, or inducements, apart from the foregoing written agreement, have been made; I am at least eighteen (18) years of age and fully competent; and I execute this Release for full, adequate and complete consideration fully intending to be bound by same.

**Participant's Signature** \_\_\_\_\_

**Participant's Printed Name** \_\_\_\_\_

**Date** \_\_\_\_\_



## TALENT RELEASE FORM

**I authorize Yavapai College, and those acting within its authority, to, at no charge:**

- Record my participation, appearance or performance on videotape, audiotape, film, photography or any other medium.
- Use my name, likeness, voice and biographical material in connection with these recordings.
- Copy and distribute the recording in whole or in part solely for education-related purposes by Yavapai College and those acting under its authority, as they deem appropriate.

Name: \_\_\_\_\_

Date: \_\_\_\_\_

Address: \_\_\_\_\_

Phone No.: \_\_\_\_\_

\_\_\_\_\_

Signature: \_\_\_\_\_

Parent/Guardian

Signature (*if under 18*): \_\_\_\_\_

Witness: \_\_\_\_\_



## **Previous Radiation Exposure Form**

### **Previous Radiation Work Experience**

Prior to entering Yavapai College's Radiologic Technology Program:

\_\_\_\_\_ I have not had any previous work experience around radiation.

\_\_\_\_\_ I have had previous work experience around radiation.

You are responsible for obtaining your previous radiation exposure records and submitting these records to the Program Director.

\_\_\_\_\_  
Student's Signature

\_\_\_\_\_  
Date

\_\_\_\_\_  
Student's Name (please print)





### Student Declaration of Pregnancy Form

To: \_\_\_\_\_:

In accordance with the Nuclear Regulatory Commission's regulations at 10 CFR 20.1208, "Dose to an embryo/fetus," I am voluntarily declaring that I am pregnant. I believe I became pregnant in \_\_\_\_\_ (only the month and year need be provided).

I understand the radiation dose to my embryo/fetus during my entire pregnancy will not be allowed to exceed 0.5 rem (5 mSv for the total pregnancy) or 0.05 rem per month (0.5 mSv per month) unless that dose has already been exceeded between the time of conception and submitting this letter. If the dose limit is exceeded during the pregnancy, I understand an action plan will be developed.

I also understand that I have the option of withdrawing this declaration at any time by submitting my request in writing.

\_\_\_\_\_  
Student's Signature

\_\_\_\_\_  
Date

\_\_\_\_\_  
Student's Name (please print)



### **Student Pregnancy Instruction Acknowledgement Form**

On \_\_\_\_\_, I reviewed the United States Nuclear Regulatory Commission Guide 8.13 Instruction Concerning Prenatal Radiation Exposure and Guide 8.29 Instruction Concerning Risks From Occupational Radiation Exposure.

I also had the opportunity to discuss with the Program Director any questions that I have related to radiation safety during my pregnancy. I understand the information supplied in the Guides and through my discussion with the Program Director. I further understand that I am to wear a radiation dosimeter at the level of the abdomen and under any shielding to be exchanged monthly. This is in addition to the radiation dosimeter that I am to wear at the collar level.

\_\_\_\_\_  
Student's Signature

\_\_\_\_\_  
Date

\_\_\_\_\_  
Student's Name (please print)



## Student Pregnancy Release Form

On \_\_\_\_\_, after reviewing the United States Nuclear Regulatory Commission Guide 8.13 Instruction Concerning Prenatal Radiation Exposure and Guide 8.29 Instruction Concerning Risks From Occupational Radiation Exposure, and after my discussion with the Program Director, I had the opportunity to review my options with the Program Director. I understand that I must determine whether I am going to withdraw or remain in the Yavapai College Radiologic Technology Program.

\_\_\_\_\_ I have decided to withdraw from the program with the option to re-enter at the beginning of \_\_\_\_\_ semester of \_\_\_\_\_ year, which is the semester that I am currently enrolled in.

\_\_\_\_\_ I have decided to remain in the program. I understand that my clinical rotations will remain the same and at no time will I ask to have these rotations modified to accommodate my pregnancy. However, I realize that I have the option to withdraw from the program at any time with the opportunity to re-enter at the beginning of the semester I am currently enrolled in next year. I will follow all the guidelines set forth in the information given to me.

\_\_\_\_\_  
Student's Signature

\_\_\_\_\_  
Date

\_\_\_\_\_  
Student's Name (please print)



## Step Improvement Plan

**Step 1 Improvement Plan** for \_\_\_\_\_ RAD \_\_\_\_\_ Date \_\_\_\_\_

- I) The following deficiencies in student performance related to expected course and/or Radiology Program outcomes have been identified in accordance with Radiology Program Student Handbook (page reference):
- II) Faculty Recommendations, Plan and Due Date for Student Remediation, Improvement and Success:
- III) Student Plan for Success/Student Comments:
- IV) Consequences If No Improvement and/or Correction of Deficiencies in Student Performance:

\_\_\_\_\_ must complete, and consistently maintain daily, the above detailed remedial strategies for optimal success within the required due date(s) for the remainder of the Radiology Program. Failure to meet any of the detailed remedial strategies will result in a **Step 2** Contract.

Should a **Step 2** Contract be put into effect \_\_\_\_\_ understands that failure to meet any of the detailed remedial strategies in this contract will result in **Step 3** immediate dismissal from the currently enrolled radiology course(s) with a course grade of F, and/or **Step 3** immediate dismissal from the Yavapai College Radiology Program, as determined by the Director of Radiology.

\_\_\_\_\_  
Yavapai College Student

\_\_\_\_\_  
Date

\_\_\_\_\_  
Yavapai College Faculty/Instructor

\_\_\_\_\_  
Date

\_\_\_\_\_  
Yavapai College Director of Radiology

\_\_\_\_\_  
Date



## Student Exit Interview Form

Student Name: \_\_\_\_\_

Semester: \_\_\_\_\_

1. Exit from:

Yavapai College Radiologic Technology Program: \_\_\_\_\_

2. Reason(s) for Exit:

Academic \_\_\_\_\_ Clinical \_\_\_\_\_ Financial \_\_\_\_\_ Health \_\_\_\_\_

Personal \_\_\_\_\_ Relocation \_\_\_\_\_

Other: \_\_\_\_\_

3. Readmission Policy:

- Reviewed with student \_\_\_\_\_
- Copy given to student \_\_\_\_\_
- Sent by mail in lieu of personal interview \_\_\_\_\_ Date mailed: \_\_\_\_\_

4. Interview Summary

5. Faculty Recommendation

6. Returned film badge: Yes \_\_\_\_\_ No \_\_\_\_\_ Returned YC Identification badge: Yes \_\_\_\_\_ No \_\_\_\_\_

Returned Clinical Facility Identification badge: Yes \_\_\_\_\_ No \_\_\_\_\_

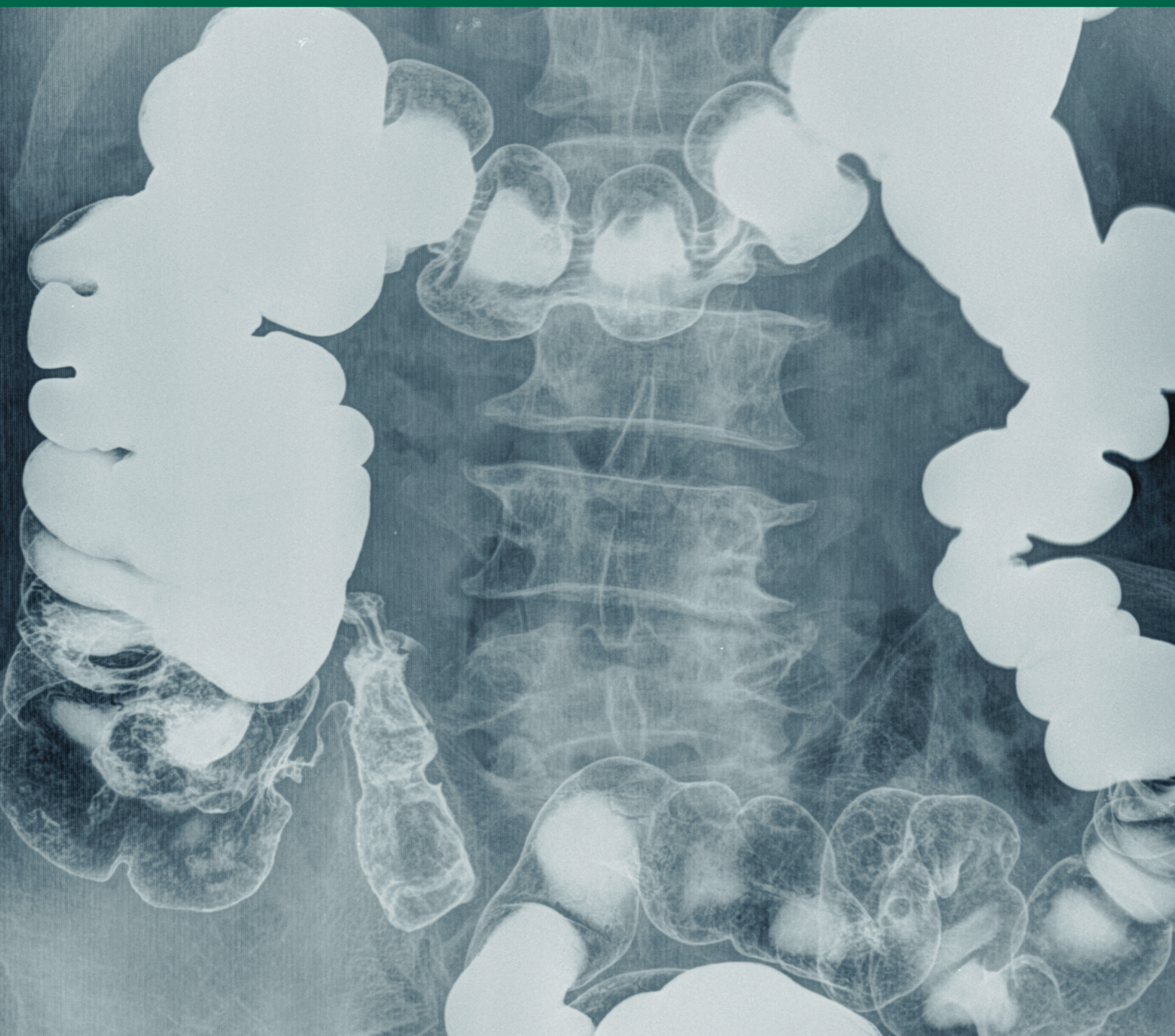
Student's Signature: \_\_\_\_\_ Date: \_\_\_\_\_

Student's Name (please print) \_\_\_\_\_

Program Director: \_\_\_\_\_ Date: \_\_\_\_\_

Copy to: Student and Student's Permanent Record

# APPENDIX





## APPENDIX

### PROCEDURE ON SCREENING FOR USE OF ALCOHOL AND DRUGS

Intoxicated/impaired behaviors that are disruptive to the learning process violate the Yavapai College Student Code of Conduct. Any individual in a clinical assignment who is under the influence of alcohol or drugs that impair judgment poses a threat to the safety of clients. For these reasons, evidence of use of these substances documented by positive drug and/or alcohol screening tests, will result in immediate withdrawal of the student from the course or program. In the event of an appeal, Yavapai College will make every effort to expedite the appeal process and assure the student of fundamental fairness.

#### Procedures

1. Pre-clinical drug screening
  - a. All Radiology Programs students are required to submit to a urine drug screening prior to the beginning of program.
  - b. Students will be advised of the procedure to follow to complete the urine drug screening prior to the beginning of clinical experiences.
  - c. The cost for preclinical drug screening is not included in the program fees.
  - d. Students cannot begin clinical experiences until the test results are available.
  - e. Students receiving negative drug screens or positive screens due to permissible prescriptive drugs will be permitted to begin/continue clinical experiences. In the latter case, medical review and documentation may be required.
  - f. Students testing positive for illegal substances or for non-prescribed legal substances will be dismissed from the course/program. See Positive Screening Test, below.
  - g. Random drug screening may be required and will be conducted at college expense. Students will be randomly selected by their student



“Y” numbers. Students must submit to the drug screening by the specified deadline or may be withdrawn from the course/program.

2. Suspicion of substance abuse
  - a. The student will be asked to submit to an alcohol or drug screening test at college expense if Radiology programs faculty, staff, or clinical preceptors:
    - i. Have reasonable cause to expect that the student is mentally or physically impaired due to alcohol or substance abuse immediately prior to or during the performance of his/her clinical duties, or
    - ii. Perceives the odor of alcohol or observes physical signs and/or behavior including, but not limited to, slurred speech, unsteady gait, confusion, or inability to concentrate.
  - b. Student will sign a consent form and have a blood or urine specimen collected according to current procedure.
  - c. The student will be removed from assignments, pending results of the test(s).
  - d. Test results will be sent to the Director of Radiology or designee.
3. Positive screening test
  - a. If the result of the drug screening test is positive and the student provides documentation of a prescription for the substance, the Director of Radiology and/or designee will consider the case in collaboration with the student and his/her health care provider. Each student will be asked to disclose prescription and over-the-counter medications he/she is taking at the time of testing.
  - b. If the results indicate a positive drug screen for alcohol, illegal substances, or medications not prescribed for that individual, the Director of Radiology and/or designee will withdraw the student from the course/program for a period of not less than one year.





- c. After a one-year absence from the course/program, the student may apply for readmission according to the guidelines below:
  - i. Must meet the current Yavapai College and Radiology Program requirements related to registration and admission to the course/program. Readmission for returning students is contingent on space available in the course/program.
  - ii. Must provide documentation of evaluation by an addiction's counselor and his/her determination as to whether the student is addicted to alcohol or drugs. If positive, the student must provide evidence of rehabilitation related to the alcohol/drug illness to include all the following:
    - (1) Documentation of satisfactory completion of recognized substance abuse treatment program.
    - (2) Evidence of after-care attendance upon completion of the treatment program.
    - (3) Weekly attendance at a 12-step or other mutually agreed upon support group. Attendance will be documented by the student and submitted to the Director of Radiology or designee by the last day of each month.
- 4. Negative screening test results for student tested under Section 2 above.
  - a. If the results of tests indicate a negative drug screen for alcohol or drugs, the student shall meet with the Director of Radiology or designee within two working days of the test results to discuss the circumstances surrounding the impaired clinical behavior.
  - b. If the indicator was the odor of alcohol, the student will be mandated to discontinue the use of the substance that may have caused the alcohol-like odor, before being allowed to return to the clinical setting.
  - c. If the indicator was behavioral, consideration must be given to a



possible medical condition being responsible for the symptoms. A medical referral for evaluation, with a report provided to the Director of Radiology or designee, may be required.

- d. Based on the information presented in the meeting, and a medical report if required, the Director of Radiology or designee will decide regarding return to the clinical setting.
  - e. If readmitted, the student must make up clinical absences incurred for testing.
5. Confidentiality: All test results will be sent to the Director of Radiology or designee. The Director of Radiology or designee may consult with college officials and outside resources for appropriate action/follow-up.
6. Inability to submit to a screening test in a timely manner, sections 1, 2, and 3 above, or refusal to submit to a screening test, Sections 1, 2, and 3 above.

If a student in the course/program is unable to submit to a drug or alcohol screening test in a timely manner, unless due to a documented emergency, or refuses to submit to screening, the student will be removed from the course/program for a period of not less than one year.

7. Appeals are processed through the Yavapai College Office of Judicial Affairs. <https://www.yc.edu/v6/college-police/faq.html>

**YC HEALTHCARE STUDENT**

**RELIGIOUS EXEMPTION REQUEST FROM COVID-19 VACCINE**

Student Name (print): \_\_\_\_\_ Program: \_\_\_\_\_ Date: \_\_\_\_\_

Please explain the religious belief, policy, practice, observance, or schedule that prevents you from getting any COVID-19 vaccination, (including the adenovirus options), and necessitates this request for religious exemption:

\_\_\_\_\_  
\_\_\_\_\_

Please specify the class(es) for which exemption is being sought:

\_\_\_\_\_

Length of time the exemption is requested: \_\_\_\_\_

Please describe the specific conflict of religious belief, policy, practice, observance, or schedule any COVID-19 vaccine (including the adenovirus options), conflicts with your religious or sincerely held beliefs. Please include in your response the specific reasons the vaccine requirement conflicts with your religious or sincerely held beliefs, policies, practices, observances, or schedule:

\_\_\_\_\_  
\_\_\_\_\_  
\_\_\_\_\_  
\_\_\_\_\_

Please Check: Yes: \_\_\_\_\_ No: \_\_\_\_\_ I am voluntarily declining to receive the COVID-19 vaccine as required by clinical agency partners, for student clinical learning placements. I understand that I may be exposed to the COVID-19 virus while participating in the placement and therefore understand and accept the associated risks.

I understand that even though YC may collect this request, clinical agencies have their own exemption policies and forms which I may be required to comply with. They have the right to review and approve or decline this request. This exemption is specific to the dates requested and YC will attempt to provide a reasonable placement as a result of this request that does not create an undue hardship on YC.

Student Signature: \_\_\_\_\_ Date: \_\_\_\_\_

School Representative Signature: \_\_\_\_\_

Title: \_\_\_\_\_ Date: \_\_\_\_\_

## YC HEALTHCARE STUDENT

### MEDICAL EXEMPTION REQUEST FROM COVID-19 VACCINE

Student Name (print): \_\_\_\_\_ Program: \_\_\_\_\_ Date: \_\_\_\_\_

Only evidence-based medical contraindications against the COVID-19 vaccine confirmed by a licensed health care provider (MD, DO, NP or PA-C) will be accepted as support for an exemption request. Acceptable medical contraindications may be re-assessed as necessary. Please explain the Medical or Health reason(s) that prevents you from getting any COVID-19 vaccination, (including the adenovirus options), that necessitates this request for a medical exemption.

\_\_\_\_\_  
\_\_\_\_\_

Please specify the class(es) for which exemption is being sought: \_\_\_\_\_

Length of time the exemption is needed: \_\_\_\_\_

- Provider's printed name: \_\_\_\_\_
- Provider's signature and date: \_\_\_\_\_ Date: \_\_\_\_\_
- Date of evaluation: \_\_\_\_\_
- Address and Phone number of Provider's practice: \_\_\_\_\_
- A statement from the provider that states: \_\_\_\_\_

*I have evaluated the above individual. I hereby attest that this individual has one of the contraindications to the COVID-19 vaccine. (check all that apply)*

- ☐ *Severe allergic reaction (e.g., anaphylaxis) after a previous dose or to a component of the COVID-19 vaccine*
- ☐ *Immediate allergic reaction of any severity to a previous dose or known (diagnosed) allergy to a component of the vaccine*
- ☐ *I hereby attest that this individual should delay receipt of COVID vaccination due to the following:*

*Other:* \_\_\_\_\_

Please Check: Yes: \_\_\_\_\_ No: \_\_\_\_\_ I am voluntarily declining to receive the COVID-19 vaccine as required by clinical agency partners, for student clinical learning placements. I understand that I may be exposed to the COVID-19 virus while participating in the placement and therefore understand and accept the associated risks.

I understand that even though YC may collect this Medical Exemption, clinical agencies have their own exemption policies and forms which I may be required to comply with. They have the right to review and approve or decline this exemption. This exemption is specific to the dates requested and YC will attempt to provide a reasonable placement that does not create an undue hardship on YC.

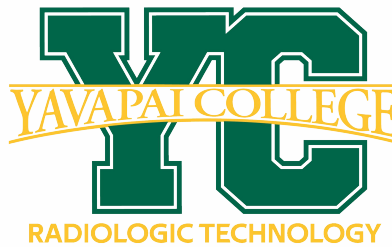
Student Signature \_\_\_\_\_

Date \_\_\_\_\_

School Representative Signature \_\_\_\_\_

Date \_\_\_\_\_

Title \_\_\_\_\_



## MRI CLEARANCE FORM

Date \_\_\_\_/\_\_\_\_/\_\_\_\_ Student ID Number \_\_\_\_\_

Name \_\_\_\_\_  
Last name, First name, Middle Initial

1. Have you had prior surgery or an operation (e.g., arthroscopy, endoscopy, etc.) of any kind? ☐No ☐Yes

If yes, please indicate the date and type of surgery:

Date \_\_\_\_/\_\_\_\_/\_\_\_\_ Type of surgery \_\_\_\_\_

Date \_\_\_\_/\_\_\_\_/\_\_\_\_ Type of surgery \_\_\_\_\_

2. Have you experienced any problem related to a previous MRI examination or MR procedure? ☐No ☐Yes

If yes, please describe: \_\_\_\_\_

3. Have you had an injury to the eye involving a metallic object or fragment (e.g., metallic slivers, shavings, foreign body, etc.)? ☐No ☐Yes

If yes, please describe: \_\_\_\_\_

4. Have you ever been injured by a metallic object or foreign body (e.g., BB, bullet, shrapnel, etc.)? ☐No ☐Yes

If yes, please describe: \_\_\_\_\_

5. Are you currently taking or have you recently taken any medication or drug? ☐No ☐Yes

If yes, please list: \_\_\_\_\_

6. Are you allergic to any medication? ☐No ☐Yes

If yes, please list: \_\_\_\_\_

7. Do you have a history of asthma, allergic reaction, respiratory disease, or reaction to a contrast medium or dye used for an MRI, CT, or X-ray examination? ☐No ☐Yes

8. Do you have anemia or any disease(s) that affects your blood, a history of renal (kidney) disease, renal (kidney) failure, renal (kidney) transplant, high blood pressure (hypertension), liver (hepatic) disease, a history of diabetes, or seizures? ☐No ☐Yes

If yes, please describe: \_\_\_\_\_

### For female patients:

9. Do you have an IUD? \_\_\_\_\_ If yes, what kind? \_\_\_\_\_

**WARNING:** Certain implants, devices, or objects may be hazardous to you and/or may interfere with the MR procedure (i.e., MRI, MR angiography, functional MRI, MR spectroscopy). Do not enter the MR system room or MR environment if you have any question or concern regarding an implant, device, or object. Consult the MRI Technologist or Radiologist BEFORE entering the MR system room. The MR system magnet is ALWAYS on.

**Please indicate if you have any of the following:**

- ☐Yes ☐No Aneurysm clip(s)  
☐Yes ☐No Cardiac pacemaker  
☐Yes ☐No Implanted cardioverter defibrillator (ICD)  
☐Yes ☐No Electronic implant or device  
☐Yes ☐No Magnetically-activated implant or device  
☐Yes ☐No Neurostimulation system  
☐Yes ☐No Spinal cord stimulator  
☐Yes ☐No Internal electrodes or wires  
☐Yes ☐No Bone growth/bone fusion stimulator  
☐Yes ☐No Cochlear, otologic, or other ear implant  
☐Yes ☐No Insulin or other infusion pump  
☐Yes ☐No Implanted drug infusion device  
☐Yes ☐No Any type of prosthesis (eye, penile, etc.)  
☐Yes ☐No Heart valve prosthesis  
☐Yes ☐No Eyelid spring or wire  
☐Yes ☐No Artificial or prosthetic limb  
☐Yes ☐No Metallic stent, filter, or coil  
☐Yes ☐No Shunt (spinal or intraventricular)  
☐Yes ☐No Vascular access port and/or catheter  
☐Yes ☐No Radiation seeds or implants  
☐Yes ☐No Swan-Ganz or thermodilution catheter  
☐Yes ☐No Medication patch (Nicotine, Nitroglycerine)  
☐Yes ☐No Any metallic fragment or foreign body  
☐Yes ☐No Wire mesh implant  
☐Yes ☐No Tissue expander (e.g., breast)  
☐Yes ☐No Surgical staples, clips, or metallic sutures  
☐Yes ☐No Joint replacement (hip, knee, etc.)  
☐Yes ☐No Bone/joint pin, screw, nail, wire, plate, etc.  
☐Yes ☐No IUD, diaphragm, or pessary  
☐Yes ☐No Are you here for an MRI examination?  
☐Yes ☐No Dentures or partial plates  
☐Yes ☐No Tattoo or permanent makeup  
☐Yes ☐No Body piercing jewelry  
☐Yes ☐No Hearing aid  
☐Yes ☐No Other implant \_\_\_\_\_  
☐Yes ☐No Breathing problem or motion disorder

**Before entering the MR environment or MR system room, you must remove all metallic objects including hearing aids, dentures, partial plates, keys, beeper, cell phone, eyeglasses, hair pins, barrettes, jewelry, body piercing jewelry, watch, safety pins, paperclips, money clip, credit cards, bank cards, magnetic strip cards, coins, pens, pocket knife, nail clipper, tools, clothing with metal fasteners, & clothing with metallic threads. Please consult the MRI Technologist or Radiologist if you have any question or concern BEFORE you enter the MR system room.**

**NOTE: You may be advised or required to wear earplugs or other hearing protection during the MR procedure to prevent possible problems or hazards related to acoustic noise.**

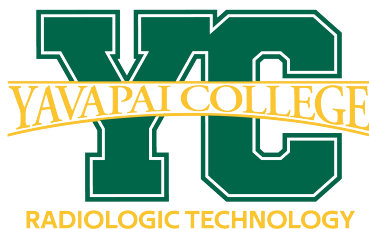
I attest that the above information is correct to the best of my knowledge. I read and understand the contents of this form and had the opportunity to ask questions regarding the information on this form and regarding the MR procedure that I am about to undergo.

Signature of Student Completing Form: \_\_\_\_\_ Date \_\_\_\_/\_\_\_\_/\_\_\_\_

Form Information Reviewed By: \_\_\_\_\_

Print name Signature

☐MRI Technologist ☐Nurse ☐Radiologist ☐Other \_\_\_\_\_



## System Orientation Checklist

### INFORMATION

Clinical Education Site (CES):	
Name & Signature of Student:	
CES Telephone number:	
Orientation Date:	
Name & Signature of Orientation Preceptor:	

### CHECKLIST

### COMMENTS

<input type="checkbox"/>	Fire, Electrical, and Chemical Hazards/Safety	
<input type="checkbox"/>	Emergency Preparedness	
<input type="checkbox"/>	Medical Emergencies	
<input type="checkbox"/>	HIPAA	
<input type="checkbox"/>	Standard Precautions	
<input type="checkbox"/>	Patient Safety	
<input type="checkbox"/>	Employee Safety	
<input type="checkbox"/>	Ethics	
<input type="checkbox"/>	Sexual Harassment	
<input type="checkbox"/>	Zero Tolerance Policies	
<input type="checkbox"/>	Customer Service Program (if applicable)	
<input type="checkbox"/>	Rules of Behavior	
<input type="checkbox"/>	Internet Policy	
<input type="checkbox"/>	MRI Screening (return screening form to clinical coordinator)	
<input type="checkbox"/>	Received by YC Radiology Program Official & Date:	

06/18/2024

TDR



## **Department Orientation Checklist**

(Complete during first week of rotation)

1. Radiology department tour (Location of CT, MRI, US, X-ray, Break Room, Radiologist reading room, Dirty Linen, Clean Linen, Supply Closet, Bathrooms, Exits, Blanket warmer, wheelchairs, AED, fire extinguisher)
2. General tour to include Emergency Department, Surgery, ICU, Floors, Cafeteria
3. Expectations for the department-stocking, cleaning, what student is and is not allowed to do. Location of supplies.
4. Parking (Parking for employees/students)
5. Locker Assignment #\_\_\_\_\_ or explain where to store belongings.
6. MRI Safety-MRI Clearance form has been completed and is loaded in PlatinumPlanner Speak to MRI Tech about MRI safety. NEVER go in MRI room without an MRI tech.
7. Worklist- Notes, Starting/Completing, what you are allowed to do in worklist-expectations
8. Changing/Charging Batteries on Image Receptors
9. Turning on and shutting down rooms, Log Ins for X-ray and Fluoro rooms
10. Go over x-ray room equipment, movements, software (How to reject image, create new box, move image, send images, annotations, crop, etc)
11. Go over fluoro equipment (locks, drapes, handles, paddle, lead aprons, gloves, movements, software.
12. Misc. information such as when to take lunch breaks, how to notify site of schedule changes, access badge procedure, etc.

---

Student Signature

Date

---

CI/Tech Signature

Date

Print Student Name: \_\_\_\_\_ Clinical Site: \_\_\_\_\_



***Yavapai***  
**COLLEGE**

SECTION I – PERSONAL INFORMATION OF INJURED		Today's Date	
ARE YOU EMPLOYED BY YAVAPAI COLLEGE? <input type="checkbox"/> YES <input type="checkbox"/> NO      IF YES – <input type="checkbox"/> FULL TIME <input type="checkbox"/> PART TIME <input type="checkbox"/> STUDENT EMPLOYEE			
IF YOU ARE NOT EMPLOYED BY YAVAPAI COLLEGE, WHAT IS YOUR STATUS? <input type="checkbox"/> STUDENT ONLY <input type="checkbox"/> VISITOR <input type="checkbox"/> VOLUNTEER <input type="checkbox"/> OTHER			
EMPLOYEES & VOLUNTEERS, EMAIL COMPLETED FORM TO <a href="mailto:AskHR@YC.EDU">AskHR@YC.EDU</a> WITH subject: <i>Accident Report Form [Last Name, First Name] /Encrypt</i> STUDENTS & VISITORS, EMAIL COMPLETED FORM TO <a href="mailto:CAMPUSPOLICE@YC.EDU">CAMPUSPOLICE@YC.EDU</a> WITH subject: <i>Accident Report Form [Last Name, First Name] /Encrypt</i>			
LAST NAME:		FIRST NAME:	MI :
ADDRESS (STREET, PO BOX, CITY, STATE, ZIP)			
DATE OF BIRTH:		HOME PHONE:	
EMERGENCY CONTACT INFORMATION NAME:		PHONE:	
SECTION II – EMPLOYEE INFORMATION (IF APPLICABLE)			
NORMAL WORKING HOURS: _____ <input type="checkbox"/> AM <input type="checkbox"/> PM TO _____ <input type="checkbox"/> AM <input type="checkbox"/> PM		NUMBER OF DAYS PER WEEK USUALLY WORKED: _____	
EMPLOYEE DEPARTMENT:		POSITION:	WORK PHONE:
SECTION III – ACCIDENT/INCIDENT INFORMATION			
DATE OF ACCIDENT/INCIDENT: _____		TIME OF ACCIDENT/INCIDENT: <input type="checkbox"/> _____ AM <input type="checkbox"/> _____ PM	
DID THIS HAPPEN: <input type="checkbox"/> COMING INTO WORK <input type="checkbox"/> DURING WORK HOURS <input type="checkbox"/> LEAVING WORK <input type="checkbox"/> OTHER _____			
LOCATION OF ACCIDENT/INCIDENT: _____			
WHICH CAMPUS: <input type="checkbox"/> CHINO VALLEY <input type="checkbox"/> CTEC <input type="checkbox"/> PRESCOTT <input type="checkbox"/> PRESCOTT VALLEY <input type="checkbox"/> SEDONA <input type="checkbox"/> VERDE VALLEY <input type="checkbox"/> OTHER			
DID INJURED PERSON SEEK MEDICAL ATTENTION: <input type="checkbox"/> YES <input type="checkbox"/> NO		DID INJURED PERSON GO TO EMERGENCY ROOM: <input type="checkbox"/> YES <input type="checkbox"/> NO	
WHERE DID INJURED PERSON SEEK MEDICAL ATTENTION – PROVIDE NAME AND ADDRESS OF PHYSICIAN OR OTHER HEALTH CARE PROFESSIONAL			
IF HOSPITALIZED, HOSPITAL NAME: _____			
TYPE OF ACCIDENT/INCIDENT: _____		PART OF BODY INJURED: _____ <input type="checkbox"/> RIGHT <input type="checkbox"/> LEFT	
Describe what happened (use back of sheet for additional information):			
WITNESS TO ACCIDENT/INCIDENT: _____		PHONE : _____	
WEATHER CONDITIONS AT TIME OF ACCIDENT/INCIDENT: _____			
ACCIDENT/INCIDENT RELATED TO: <input type="checkbox"/> FLOORING/SURFACE <input type="checkbox"/> LIQUID/VAPORS <input type="checkbox"/> WEATHER/NATURE <input type="checkbox"/> OTHER _____			
SIGNED BY: INJURED PERSON'S SIGNATURE (PRINT & SIGN): _____		DATE: _____	
SIGNED BY: SUPERVISOR'S SIGNATURE: (PRINT & SIGN) _____		DATE: _____	
WAS COLLEGE POLICE CALLED TO THIS ACCIDENT/INCIDENT: <input type="checkbox"/> YES <input type="checkbox"/> NO			
Employees and Volunteers, email completed form to <a href="mailto:HumanResources@yc.edu">HumanResources@yc.edu</a> with subject: <i>Accident Report Form [Last Name, First Name] /Encrypt</i> Students and visitors, email completed form to <a href="mailto:CampusPolice@yc.edu">CampusPolice@yc.edu</a> with subject: <i>Accident Report Form [Last Name, First Name] /Encrypt</i>			

Save form in M-files